

TRANSPORTATIONIMPROVEMENTPROGRAM

FEDERAL FISCAL YEARS 2022 – 2025

Revision 9

Pre-Approved Administrative Modifications

December 2022



This report was funded in part through grants from the Federal Highway Administration and Federal Transit Administration, U.S. Department of Transportation. The views and opinions of the agency expressed herein do not necessarily state or reflect those of the U.S. Department of Transportation.

Table of Contents

ABBREVIATIONS.....	3
INTRODUCTION.....	6
REVISION PROCESS.....	7
REVISION HISTORY.....	9
REVISIONS.....	10
PROJECTS.....	18

ABBREVIATIONS

Acronyms

ADA	Americans with Disabilities Act
CAC	Citizen Advisory Committee
CFR	Code of Federal Regulations
CMP	Congestion Management Process
DTS	City and County of Honolulu Department of Transportation Services
EJ	Environmental Justice
FHWA	Federal Highway Administration
FTA	Federal Transit Administration
FFY	Federal Fiscal Year (October 1- September 30)
HART	Honolulu Authority for Rapid Transportation
HDOT	Hawaii Department of Transportation
HSIP	Highway Safety Improvement Program
IGR	Intergovernmental Review
OahuMPO	Oahu Metropolitan Planning Organization
ORTP	Oahu Regional Transportation Plan
STIP	Statewide Transportation Improvement Program
TAC	Technical Advisory Committee
TAM	Transit Asset Management
TIP	Transportation Improvement Program
T6	Title VI of the Civil Rights Act of 1964
U.S.C.	United States Code

Funding Categories

Federal Highway Administration (FHWA)

Bridge OS	Bridge Off-System
Earmark	Earmark
FHWA Grant	FHWA Competitive Grants
FLAP	Federal Lands Highway Discretionary
HIP-BFP	Highway Infrastructure Program - Bridge Formula Program
HIP-CPF/CDS	Highway Infrastructure Program - Community Project Funding / Congressionally Directed Spending
HSIP	Highway Safety Improvement Program
NHPP	National Highway Performance Program
RHCP	Railway Highway Crossing Program
STBG	Surface Transportation Block Grant Program
STP Enhance	Surface Transportation Program Enhancement
TA	Transportation Alternatives Set-Aside

Federal Transit Administration (FTA)

§5307/5340	Urbanized Area Formula Grants / Growing States/High Density States Program
§5309	Capital Investment Grants
§5310	Enhanced Mobility of Seniors & Individuals with Disabilities
§5329	State Safety Oversight Program
§5337	State of Good Repair Program
§5339	Bus and Bus Facilities Program
FTA Grant	FTA Competitive Grants

Local

Local Local Funds

Project Phases (In Chronological Order)

PLN	Planning
PE1	Preliminary Engineering – Part 1: Environmental Clearances and Design Work
PE2	Preliminary Engineering – Part 2: Final Design
DES	Design
PREROW	Preliminary Right-of-Way Activities
ROW	Right-of-Way Acquisition
DES/CON	Design-Build
ADVCON	Advance Construction
CON	Construction
EQP	Equipment acquisition
REL	Relocation expenses
OPR	Operation expenses
INSP	Inspection

INTRODUCTION

The Oahu Metropolitan Planning Organization (OahuMPO) is the metropolitan planning organization for the island of Oahu. The OahuMPO is designated by the governor of the state to plan for, coordinate, and program the many transportation investments in the region. The Transportation Improvement Program (TIP) is a short-term program which lists all surface transportation projects on the island of Oahu that are eligible for Federal funding or that are regionally significant. The TIP covers a period of four years and contains two additional years for illustrative purposes. The TIP is updated every three years and revised at least twice a year.

The Hawaii Department of Transportation (HDOT), the City and County of Honolulu Department of Transportation Services (DTS), and the Honolulu Authority for Rapid Transportation (HART), all include projects within the TIP. The TIP identifies the highway, public transit, arterial and local street, pedestrian, and alternative transportation projects that will receive Federal transportation funds in the programmed Federal Fiscal Years (FFYs). All projects that involve Federal funds or are regionally significant must be reviewed and approved by the Oahu Metropolitan Planning Organization Policy Board.

Requirements:

- The TIP is required to be financially constrained by year, meaning that all projects can be implemented using committed, available, or reasonably available resources.
- The TIP must include a financial plan that demonstrates which projects can be implemented using current revenue sources and which projects are to be implemented using proposed revenue sources.
- All projects must be consistent with the Oahu Regional Transportation Plan (ORTP).
- All projects must be 'ready-to-go' in the year that they are programmed to be funded.
- All projects must have the matching local funds in place.
- All projects must meet at least one of the Federal planning factors.

REVISION PROCESS

The TIP is frequently revised to reflect changes in project delivery schedules, changes in cost estimates and/or in scope, and changes in management systems and administrative priorities. A revision refers to a change to the TIP that occurs between the triennial updates. A minor revision is an “administrative modification,” while a major revision is an “amendment.”

Pre-Approved Administrative Modifications:

Pre-approved administrative modifications are minor revisions that are considered pre-approved and can be immediately processed without prior review by the OahuMPO Committees and Policy Board. No solicitation of public comment or re-demonstration of financial constraint is required (23 CFR 450.104). However, it is assumed that financial constraint shall be re-established through the next TIP amendment process and the following must be true:

- The administrative modifications must not affect the financial constraint of the TIP.
- The administrative modifications must not result in the addition of another project (excluding the addition of projects in grouped listings or programs) and the funding amounts must stay within the guidelines defined in the TIP Policies and Procedures.
- The administrative modifications must not result in the deletion of project, including the deferral of a project to a year that is outside of the first four years of the TIP.
- The implementing agency for the project must concur with the actions.

Expedited Administrative Modifications:

Requests for expedited approval of administrative modifications are submitted directly to the Policy Board without prior review by the TAC or solicitation of public comment.

Amendments:

TIP amendments are submitted to the TAC, the Policy Board, and the Governor’s designee for action. Financial constraint is re-demonstrated and consistent with 23 CFR 450.220, the technical analyses are re-run, including the T6/EJ analysis, and the

performance measure and Congestion Management Process (CMP) impacts are reassessed. Public comments are also solicited based on the procedures outlined in the OahuMPO Public Participation Plan, and the public comment period begins once the Amendment is posted on the OahuMPO website. Comments and the responses must be documented within the TIP Amendment document.

The TIP may be revised at any time if time permits. There are two planned revision cycles in each federal fiscal year as described in the table below.

Description	First Revision (Fall/Winter)	Second Revision (Spring/Summer)
Early coordination: Send DTS and HART official email that TIP revision requests are due in 3 months	August	January
HDOT schedules Over-the-Shoulder-Reviews (OSRs) with HDOT, DTS, HART	October-November	March-April
TIP revision requests due to OahuMPO	November	April
OahuMPO develops and finalizes draft TIP revision	December	April-May
HDOT, DTS, and HART review draft TIP revision	December	April-May
OahuMPO reruns analyses, and prepares a fiscally constrained draft revision document for distribution	December	May
Revisions posted to OahuMPO website and public and agency comment period begins	January	June
Public comments and shared with the Committees and Policy Board	January	June
TAC consideration	February	July
Policy Board Action	February-March	July
OahuMPO sends letter to Governor's designee for approval of the TIP Amendment	March	July-August
OahuMPO sends letter to HDOT requesting to incorporate TIP revision into the STIP	March	August
TIP/STIP Amendment jointly approved by FHWA and FTA	March	August
OahuMPO website updated with date of revision approval and final revision document	March	August
A full "As of revision #X" TIP document is created and uploaded to the OahuMPO website	March	August

REVISION HISTORY

The current FFY 2022-2025 TIP was endorsed by the Policy Board in July 2021 and has been revised 8 times through September 2022. A summary is provided in the table below.

Revision #	Revision Type	Date	# Of Projects Modified	# Of Projects Removed	# Of Projects Added	Total # Of Projects Revised
1	Pre-Approved Administrative Modification	January 2022	37	0	0	37
2	Expedited Administrative Modification	February 2022	6	0	0	6
3	Amendment	February 2022	6	1	6	13
4	Pre-Approved Administrative Modification	May 2022	19	0	0	19
5	Expedited Administrative Modification	June 2022	1	0	0	1
6	Amendment	June 2022	3	1	4	8
7	Expedited Administrative Modification	July 2022	1	0	0	1
8	Pre-Approved Administrative Modification	September 2022	1	0	0	1
Total			74	2	10	86

REVISIONS

The following tables list the revisions grouped by the type of federal funding (e.g., FHWA) and project sponsor (e.g., HDOT).

FHWA Funded Projects: Hawaii Department of Transportation

Project #	Project Name	Revision Details
OS1	Bridge and Pavement Improvement Program, Oahu	H1 Resurfacing (Miller Ped Overpass to Kapiolani Interchange) - Request to redistribute \$15M in ADVCON conversions from 2023 and extend into 2027 for fiscal constraint (A.11).
OS1	Bridge and Pavement Improvement Program, Oahu	H1 Resurfacing (Salt Lake Blvd to Airport Viaduct) - Request to redistribute \$15M in ADVCON conversions from 2023 and 2024 and extend into 2026 (A.11).
OS1	Bridge and Pavement Improvement Program, Oahu	Kamehameha Hwy Rehab (Kamananui Rd and Wilikina Dr) - Request to redistribute \$8M in ADVCON conversions from 2023 to 2022 (A.11).
OS1	Bridge and Pavement Improvement Program, Oahu	Request to re-purpose \$4.4M in earmark funding for ADVCON conversions in 2023 (A.10).
OS5	Freeway Management System, Interstate H-1, H-2, and Moanalua Freeway (Routes H-201 and 78)	Phase 4 - Request to defer and inflate \$10M for CON in 2024 to 2025 since PE1 is still in the preliminary design stages and scheduled to finish in FFY 2024 (A.2).
OS5	Freeway Management System, Interstate H-1, H-2, and Moanalua Freeway (Routes H-201 and 78)	Phase 4 - Request to defer and inflate \$5M for ADVCON conversions in 2025 to 2026 since CON is being deferred (A.2).
OS5	Freeway Management System, Interstate H-1, H-2, and Moanalua Freeway (Routes H-201 and 78)	Phase 4 - Request to defer and inflate \$600K for PE2 funds in 2023 to 2024 since PE1 is still in the preliminary design stages and scheduled to finish in FFY 2024 (A.2).
OS5	Freeway Management System, Interstate H-1, H-2, and Moanalua Freeway (Routes H-201 and 78)	Phase 5 - Request to defer and inflate \$10.2M for CON funds in 2025 to 2026 (A.2).
OS5	Freeway Management System, Interstate H-1, H-2, and Moanalua Freeway (Routes H-201 and 78)	Phase 5 - Request to defer and inflate \$5M for ADVCON conversions in 2026 to 2027 since CON is being deferred (A.2/A.6).
OS5	Freeway Management System, Interstate H-1, H-2, and Moanalua Freeway (Routes H-201 and 78)	Phase 5 - Request to defer and inflate \$612K for PE2 in 2024 to 2025 (A.2).
OS12	Destination Sign, Upgrade and Replacement	Phase IIIB - Request to defer ADVCON conversions from \$3M in 2025 to 2026 and defer and inflate \$3M in 2026 to \$3.3M 2027 since CON is being deferred due to federal utility delays (A.2).
OS12	Destination Sign, Upgrade and Replacement	Phase IIIB - Request to defer and inflate \$10M for CON in 2024 to 2025 since federal utilities will be affected (A.2).
OS17	Interstate Route H-1, Kapolei Interchange Complex, Phase 3	Request to adjust \$34.6M for CON in 2022 based on the federal obligation amount and extend ADVCON conversions into 2027 (A.11).
OS26	Kalaniana'ole Highway (Route 72) Resurfacing, Poalima Street to Vicinity of Makai Pier	Request to redistribute and extend \$6M for ADVCON conversions into 2023 and 2024 for fiscal constraint (A.11).

FHWA Funded Projects: Hawaii Department of Transportation

Project #	Project Name	Revision Details
OS29	Kamehameha Highway (Route 83), Bridge Replacement, Kaluanui Stream Bridge	Request to redistribute \$18.36M for CON funds in 2023 and extend \$7M in ADVCON conversions into 2026 and 2027 for fiscal constraint (A.11).
OS31	Kamehameha Highway (Route 83), Bridge Replacement, Laieloa Stream Bridge	Request to adjust and extend \$10.3M for ADVCON conversions in 2024 and in 2025 extend into 2026 for financial constraint (A.2).
OS31	Kamehameha Highway (Route 83), Bridge Replacement, Laieloa Stream Bridge	Request to defer and inflate \$700K for ROW funds in 2022 to 2023 due to delays from negotiations with numerous landowners (A.2).
OS31	Kamehameha Highway (Route 83), Bridge Replacement, Laieloa Stream Bridge	Request to increase the estimated total project cost from \$15,000,000 to \$17,000,000.
OS36	Kamehameha Highway (Route 83), Bridge Replacement, Waipilopilo Stream Bridge	Request to adjust and extend \$6M for ADVCON conversions in 2024 and 2025 for fiscal constraint (A.11).
OS36	Kamehameha Highway (Route 83), Bridge Replacement, Waipilopilo Stream Bridge	Request to redistribute \$10M for CON funds in 2023 for financial constraint (A.11).
OS45	Moanalua Freeway (route H-201), Highway Lighting Improvements, Halawa Heights Off-Ramp to Middle Street Overpass	Request to redistribute \$6M for ADVCON conversions in 2023 and extend into 2024 for fiscal constraint (A.11).
OS62	Pali Hwy (Rte 61) Resurfacing & Lighting Improvements, Vineyard Blvd (Rte 98) to Kamehameha Hwy (Rte 83)	Phase 2: Request to redistribute and extend \$20M for ADVCON conversions in 2023 and 2024 into 2025 and 2026 for fiscal constraint (A.11).
OS69	Farrington Highway (Route 93), Safety Improvements, H-1 Freeway to Pohakunui Avenue	Request to delete \$2M for ADVCON conversions in 2023 since the project was fully obligated in 2022 (A.11).
OS69	Farrington Highway (Route 93), Safety Improvements, H-1 Freeway to Pohakunui Avenue	Request to revise CON funds in 2022 to show full obligation (A.11).
OS72	Kamehameha Highway (Route 83), Bridge Replacement, Waimanana Bridge	Request to defer \$3M in 2027 since project is unassigned and no work has started (A.2/A.6).
OS72	Kamehameha Highway (Route 83), Bridge Replacement, Waimanana Bridge	Request to defer and inflate \$665K for PE1 funds in 2022 to 2023 since the project is unassigned and no work has started (A.2)
OS72	Kamehameha Highway (Route 83), Bridge Replacement, Waimanana Bridge	Request to defer and inflate \$755K for ROW funds in 2024 to 2025 since the project is unassigned and no work has started (A.2)
OS72	Kamehameha Highway (Route 83), Bridge Replacement, Waimanana Bridge	Request to defer and inflate \$9.2M for CON funds in 2026 to 2027 since the project is unassigned and no work has started (A.2, A.6)

FHWA Funded Projects: Hawaii Department of Transportation

Project #	Project Name	Revision Details
OS72	Kamehameha Highway (Route 83), Bridge Replacement, Waimanana Bridge	Request to defer and inflate \$950K for PE2 funds in 2023 to 2024 since the project is unassigned and no work has started (A.2)
OS73	Likelike Highway (Route 63), Rehabilitation and Safety Improvements, Emmeline Place to Kahekili Highway	Request to redistribute \$7M for ADVCON conversions in 2023 and extend into 2024 for fiscal constraint (A.11).
OS74	Interstate Route H-1, Seismic Retrofit, McCully Street Separation	Request to defer and inflate from \$440K for PE2 in 2024 to 2025 since PE1 and environmental permitting will take 2 years to complete (A.2).
OS75	Kamehameha Highway (Route 83), Rockfall Protection, Waimea Bay	Haleiwa Phase: Request to adjust \$10.4M for ADVCON conversions in 2025 and 2026 and extend into 2027 since CON was deferred and for financial constraint (A.2).
OS75	Kamehameha Highway (Route 83), Rockfall Protection, Waimea Bay	Haleiwa Phase: Request to defer and inflate \$20M for CON funds in 2024 to 2025 due to Right of Entry delays (A.2).
OS75	Kamehameha Highway (Route 83), Rockfall Protection, Waimea Bay	Haleiwa Phase: Request to defer and inflate \$816K for PE2 funds in 2023 to 2024 due to Right of Entry delays (A.2).
OS75	Kamehameha Highway (Route 83), Rockfall Protection, Waimea Bay	Sunset Beach Phase: Request to defer \$3.4M for ADVCON conversions in 2025 beyond 2027 since CON is being deferred (A.2).
OS75	Kamehameha Highway (Route 83), Rockfall Protection, Waimea Bay	Sunset Beach Phase: Request to defer and inflate \$8M for CON funds in 2024 to 2027 since design hasn't started and this location is not a top statewide priority (A.2).
OS75	Kamehameha Highway (Route 83), Rockfall Protection, Waimea Bay	Waimea Bay Phase: Request to defer and inflate \$510K for ROW funds in 2023 to 2024 due to Right of Entry delays (A.2).
OS79	Shoreline Protection/Mitigation Program	Priority 1 - (Immediate) Kamehameha Hwy: Request to defer and inflate \$2.0M for CON in 2023 to 2024 due to delays with completing PE2 (A.2).
OS79	Shoreline Protection/Mitigation Program	Priority 1 - (Immediate/Short-Term) Kamehameha Hwy, Phase 1: Request to adjust \$3M ADVCON conversions in 2027 for fiscal constraint (A.11).
OS79	Shoreline Protection/Mitigation Program	Priority 1 - (Immediate/Short-Term) Kamehameha Hwy, Phase 1: Request to redistribute \$21M for CON in 2025 for fiscal constraint (A.11).
OS79	Shoreline Protection/Mitigation Program	Priority 1 - (Immediate/Short-Term) Kamehameha Hwy, Phase 2: Request to extend ADVCON conversions into 2027 for fiscal constraint (A.11).

FHWA Funded Projects: Hawaii Department of Transportation

Project #	Project Name	Revision Details
OS79	Shoreline Protection/Mitigation Program	Priority 1 - (Immediate/Short-Term) Kamehameha Hwy, Phase 2: Request to redistribute \$20M for CON in 2025 for fiscal constraint (A.11).
OS79	Shoreline Protection/Mitigation Program	Priority 2 - (Mid/Long-Term) Kalanianaʻole Hwy, Kaupo: Request to defer \$500K for PE2 from 2025 to beyond 2027 since Kamehameha Hwy locations are the priority.
OS79	Shoreline Protection/Mitigation Program	Priority 2 - (Mid/Long-Term) Kalanianaʻole Hwy, Kaupo: Request to defer \$50K for ROW from 2025 to beyond 2027 since Kamehameha Hwy locations are the priority.
OS79	Shoreline Protection/Mitigation Program	Priority 2 - (Mid/Long-Term) Kalanianaʻole Hwy, Kaupo: Request to defer \$8.5M for CON from 2027 since Kamehameha Hwy locations are the priority.
OS79	Shoreline Protection/Mitigation Program	Priority 2 - (Mid/Long-Term) Kalanianaʻole Hwy, Kaupo: Request to defer and inflate \$1.0M for PE1 from 2023 to 2027 since Kamehameha Hwy locations are the priority. Resources will concentrate on Kamehameha Highway shoreline needs.
OS82	Interstate Route H-1 Improvements, Eastbound, Ola Lane Overpass to Vineyard Boulevard	Request to adjust \$15M for CON in 2023 due to fiscal constraint (A.11).
OS82	Interstate Route H-1 Improvements, Eastbound, Ola Lane Overpass to Vineyard Boulevard	Request to adjust \$40M for ADVCON conversions due to fiscal constraint from 2024-2027 (A.11).
OS82	Interstate Route H-1 Improvements, Eastbound, Ola Lane Overpass to Vineyard Boulevard	Request to increase the estimated project cost from \$75,000,000 to \$90,000,000.
OS-21-43	Kamehameha Highway (Route 99) Seismic Retrofit, Pearl Harbor Interchange, Structure #2	Request to defer and inflate \$670K for PE2 in 2024 to 2025 since the consultant will be starting shortly (A.2).
OS-21-47	Interstate Route H-1 Highway Lighting Improvements, Kaimakani Overpass to Gulick Avenue	Request to correct milepost limits for phase 2. Kamakani OP to Gulick Avenue from mileposts 12.83 to 16 to mileposts 16-19 (A.3).
OS-21-47	Interstate Route H-1 Highway Lighting Improvements, Kaimakani Overpass to Gulick Avenue	Request to redistribute \$30M for Phase 1 CON funds in 2024 for financial constraint (A.11).
OS-21-47	Interstate Route H-1 Highway Lighting Improvements, Kaimakani Overpass to Gulick Avenue	Request to redistribute \$8M for Phase 1 ADVCON conversions in 2025 and extend into 2027 for fiscal constraint (A.11).
OS-21-51	Moanalua Freeway, (Interstate Route H-201) Seismic Retrofit, Puuloa Interchange (Five Structures)	Request to defer and inflate \$1.0M for PE1 in 2023 to 2024 since the project is not assigned (A.2).
OS-21-51	Moanalua Freeway, (Interstate Route H-201) Seismic Retrofit, Puuloa Interchange (Five Structures)	Request to defer and inflate \$1.5M for PE2 in 2024 to 2026 since the project is not assigned and PE1 and environmental permitting will take 2 years to complete (A.2).

FHWA Funded Projects: Hawaii Department of Transportation

Project #	Project Name	Revision Details
OS-21-52	Likelike Highway (Route 63) Seismic Retrofit, Kalihi Stream Bridges	Request to defer and inflate \$590K for PE2 in 2026 to 2027 since PE1 and environmental permitting will take 2 years to complete (A.6).
OS-21-53	Farrington Highway Widening, Helelua to Mohihi	Request to redistribute \$15M in ADVCON conversions from 2025 into 2026 and 2027 (A.11).
OS-22-60	Adaptive Traffic Signal Control Technology & Traffic Signal Controller Installation at Various Locations, Oahu	Request to redistribute and extend \$20M in ADVCON conversions from 2023 and 2024 through 2027 for fiscal constraint (A.11).
OS-22-60	Adaptive Traffic Signal Control Technology & Traffic Signal Controller Installation at Various Locations, Oahu	Request to update CON in Phase 1 with 2022 obligation funds.
OS-22-60	Adaptive Traffic Signal Control Technology & Traffic Signal Controller Installation at Various Locations, Oahu	Request to update CON in Phase 2 with 2022 obligation funds.
OS-22-62	Farrington Highway (RTE 93) Sidewalk Improvements, Hakimo Rd to Nanakuli Ave, MP 6.89 to MP 5.06	Request to extend \$6M for ADVCON conversions into 2026 and 2027 (A.11).
OS-22-62	Farrington Highway (RTE 93) Sidewalk Improvements, Hakimo Rd to Nanakuli Ave, MP 6.89 to MP 5.06	Request to redistribute CON funds in 2023 (A.11).

FHWA Funded Projects: City & County of Honolulu

Project #	Project Name	Revision Details
OC2	Bikeway Improvements Program	Request to add the Keolu Drive Complete Streets project (A.5).
OC2	Bikeway Improvements Program	Request to add the South Shore Bikeway (EW Transportation Corridor Planning) project (A.10).
OC2	Bikeway Improvements Program	Request to increase the estimated total project cost from \$3,393,000 to \$18,018,000 (A.5).
OC4	Computerized Traffic Control System	Request to defer Phase 17 - Maili due to delays caused by procurement and increase the amount programmed to reflect changes in cost estimates (A.2. and A.11).
OC4	Computerized Traffic Control System	Request to increase the amount programmed in Phase 16 - Waianae to reflect changes in cost estimates due to the increase in cost of materials and labor (A.11).
OC4	Computerized Traffic Control System	Request to increase the estimated total project cost from \$9,275,000 to \$10,577,000 (A.2 and A.11).
OC8	Traffic Improvements at Various Locations	Request to increase the amount programmed for Mahoe and Waipahu Streets to reflect changes in cost estimates previously constrained by the local CIP budget (A.11).
OC8	Traffic Improvements at Various Locations	Request to increase the estimated total project cost from \$7,919,000 to \$9,419,000 (A.11).
OC25	Transportation Alternatives Program (MPO)	Ala Wai Bridge Project - Request to add CON and INSP discretionary funds to account for competitive grant opportunities (A.10).
OC25	Transportation Alternatives Program (MPO)	Ala Wai Bridge Project - Request to decrease the CON amount programmed to account for competitive grant opportunities (A.11).
OC25	Transportation Alternatives Program (MPO)	Ala Wai Bridge Project - Request to decrease the PE2 amount programmed based on updated estimates (A.11).
OC25	Transportation Alternatives Program (MPO)	Request to add the Rail Station Multimodal Access Improvements - Halawa Station and Waiawa Station to the program using TAP-U funds that will be flexed to FTA §5307 (A.5).
OC-21-54	Kalaeloa Boulevard Railroad Improvements	Request to increase the amount programmed based on HDOT estimates (A.11).
OC-21-55	Oahu Traffic Signal Controller Modernization	Request to defer due to procurement delays, revise the project description, and increase the amount programmed based on HDOT RFP costs (A.2, A.3, and A.11).

FTA Funded Projects: City & County of Honolulu

Project #	Project Name	Revision Details
OC14	Bus Stop ADA Access and Site Improvements	Request to increase FTA §5307/§5340 funds per CIP (A.11).
OC14	Bus Stop ADA Access and Site Improvements	Request to increase the estimated total project cost from \$3,815,000 to \$4,604,000 (A.11).
OC20	Preventive Maintenance	Request to decrease total estimated project cost from \$131,250,000 to \$105,000,000 (A.11).
OC20	Preventive Maintenance	Request to reprogram FFY 23 funds to OC13 (A.8).
OC21	Transit Safety and Security Projects	Request to increase CON funds per the CIP (A.11).
OC21	Transit Safety and Security Projects	Request to increase CON funds to include CRRSAA & ARP related 1% (A.11).
OC21	Transit Safety and Security Projects	Request to increase the estimated total project cost from \$3,091,000 to \$6,905,000 (A.11).
OC31	Middle Street Transit Center	Request to revise for future master plan and design of property (A.11).

PROJECTS

The following projects are grouped by the type of federal funding (e.g., FHWA) and project sponsor (e.g., HDOT).

FHWA Funded Projects: Hawaii Department of Transportation



Source: Esri, Maxar, GeoEye, Earthstar Geographics, CNES/Airbus DS, USDA, USGS, AeroGRID, IGN, and the GIS User Community

Project Description:

System maintenance of highway bridges and pavements. Work may include bridge and/or pavement reconstruction, resurfacing, restoration, rehabilitation and/or preservation.

Mile Post/s: Not applicable

Complete Streets (CS):

Project will implement: No information available.

Existing Feature/s: No information available.

Project Website: None

Neighborhood(s): Various Locations

Estimated Total Project Cost: \$126,000,000

Total Project Cost Notes:

(May include project costs outside of the 4-year TIP and 2 informational years.)

Project Sponsor: State of Hawaii (FHWA Funded)

Agency Responsible for Carrying Out Project/Phase:

Hawaii Department of Transportation

FOR INFORMATION ONLY

Phase	FFY 2022			FFY 2023			FFY 2024			FFY 2025			FFY 2026			FFY 2027			Funding Category
	Total (x\$1000)	Federal (x\$1000)	Local (x\$1000)	Total (x\$1000)	Federal (x\$1000)	Local (x\$1000)	Total (x\$1000)	Federal (x\$1000)	Local (x\$1000)	Total (x\$1000)	Federal (x\$1000)	Local (x\$1000)	Total (x\$1000)	Federal (x\$1000)	Local (x\$1000)	Total (x\$1000)	Federal (x\$1000)	Local (x\$1000)	
CON	21,000	0	21,000	21,000	0	21,000	21,000	0	21,000	21,000	0	21,000	21,000	0	21,000	21,000	0	21,000	Local
<i>Interstate H-1 Airport Viaduct Rehab</i>																			
ADVCON	0	1,187	-1,187	0	0	0	0	0	0	0	0	0	0	0	0	0	0	0	NHPP
<i>Interstate H-1 Rehabilitation, Salt Lake Blvd to Airport Viaduct</i>																			
ADVCON	0	0	0	0	4,400	-4,400	0	0	0	0	0	0	0	0	0	0	0	0	Earmark
ADVCON	0	5,999	-5,999	0	0	0	0	2,600	-2,600	0	4,000	-4,000	0	4,000	-4,000	0	0	0	NHPP
<i>Interstate H-1 Resurfacing, Miller Ped Overpass to Kapiolani Interchange</i>																			
ADVCON	0	7,363	-7,363	0	4,000	-4,000	0	4,000	-4,000	0	4,000	-4,000	0	4,000	-4,000	0	4,000	-4,000	NHPP
<i>Kamehameha Hwy Rehabilitation, Vicinity of Kapuhi St to Dairy Rd, MP 5.94 to MP 9.72</i>																			
ADVCON	0	7,326	-7,326	0	0	0	0	0	0	0	0	0	0	0	0	0	0	0	NHPP
<i>Kamehameha Hwy, Kamananui Rd and Wilikina Dr Rehabilitation</i>																			
ADVCON	0	11,000	-11,000	0	0	0	0	0	0	0	0	0	0	0	0	0	0	0	NHPP
<i>Nimitz Hwy and Ala Moana Blvd Resurfacing, Sand Island Access Rd to Piikoi St</i>																			

OS1

Bridge and Pavement Improvement Program, Oahu

													FOR INFORMATION ONLY						Funding Category
FFY 2022			FFY 2023			FFY 2024			FFY 2025			FFY 2026			FFY 2027				
Total	Federal	Local	Total	Federal	Local	Total	Federal	Local	Total	Federal	Local	Total	Federal	Local	Total	Federal	Local		
(x\$1000)	(x\$1000)	(x\$1000)	(x\$1000)	(x\$1000)	(x\$1000)	(x\$1000)	(x\$1000)	(x\$1000)	(x\$1000)	(x\$1000)	(x\$1000)	(x\$1000)	(x\$1000)	(x\$1000)	(x\$1000)	(x\$1000)	(x\$1000)		
Phase																			
Nimitz Hwy and Ala Moana Blvd Resurfacing, Sand Island Access Rd to Piikoi St																			
ADVCON	0	5,169	-5,169	0	0	0	0	0	0	0	0	0	0	0	0	0	0	NHPP	
Total	21,000	38,044	-17,044	21,000	8,400	12,600	21,000	6,600	14,400	21,000	8,000	13,000	21,000	8,000	13,000	21,000	4,000	17,000	



Source: Esri, Maxar, GeoEye, Earthstar Geographics, CNES/Airbus DS, USDA, USGS, AeroGRID, IGN, and the GIS User Community, Sources: Esri, HERE, Garmin, FAO, NOAA, USGS, © OpenStreetMap contributors, and the GIS User Community

Project Description:

The project consists of the installation of closed-circuit television (CCTV) cameras, vehicle detectors, cabinets, and communication equipment on the Interstate H-1, H-2, and Moanalua Freeway. Minor interior modifications of the Interstate Route H-3 Control Center will also be done to accommodate system improvements. This project will be implemented in phases.

Mile Post/s:

Queen Liliuokalani Freeway: MP 0.00 to MP 27.16,
Veterans Memorial Freeway: MP 0.00 to MP 8.33, John
A. Burns Freeway: MP 0.00 to MP 15.32

Complete Streets (CS):

Project will implement: No information available.

Existing Feature/s: No information available.

Project Website: None

Neighborhood(s): Various Locations

Estimated Total Project Cost: \$200,000,000

Total Project Cost Notes:

(May include project costs outside of the 4-year TIP and 2 informational years.)

Project Sponsor: State of Hawaii (FHWA Funded)

Agency Responsible for Carrying Out Project/Phase:

Hawaii Department of Transportation

FOR INFORMATION ONLY

Phase	FFY 2022			FFY 2023			FFY 2024			FFY 2025			FFY 2026			FFY 2027			Funding Category
	Total (x\$1000)	Federal (x\$1000)	Local (x\$1000)	Total (x\$1000)	Federal (x\$1000)	Local (x\$1000)	Total (x\$1000)	Federal (x\$1000)	Local (x\$1000)	Total (x\$1000)	Federal (x\$1000)	Local (x\$1000)	Total (x\$1000)	Federal (x\$1000)	Local (x\$1000)	Total (x\$1000)	Federal (x\$1000)	Local (x\$1000)	
Phase 3																			
ADVCON	0	2,438	-2,438	0	3,000	-3,000	0	0	0	0	0	0	0	0	0	0	0	0	NHPP
Phase 3A																			
CON	2,500	1,000	1,500	0	0	0	0	0	0	0	0	0	0	0	0	0	0	0	NHPP
ADVCON	0	0	0	0	1,000	-1,000	0	0	0	0	0	0	0	0	0	0	0	0	NHPP
Phase 4																			
PE2	0	0	0	0	0	0	630	567	63	0	0	0	0	0	0	0	0	0	NHPP
CON	0	0	0	0	0	0	0	0	0	10,500	3,150	7,350	0	0	0	0	0	0	NHPP
ADVCON	0	0	0	0	0	0	0	0	0	0	0	0	0	5,250	-5,250	0	0	0	NHPP
Phase 5																			
PE1	800	720	80	0	0	0	0	0	0	0	0	0	0	0	0	0	0	0	NHPP
PE2	0	0	0	0	0	0	0	0	0	642	578	64	0	0	0	0	0	0	NHPP
CON	0	0	0	0	0	0	0	0	0	0	0	0	10,710	3,213	7,497	0	0	0	NHPP

OS5

Freeway Management System, Interstate H-1, H-2, and Moanalua Freeway (Routes H-201 and 78)

													FOR INFORMATION ONLY						
Phase	FFY 2022			FFY 2023			FFY 2024			FFY 2025			FFY 2026			FFY 2027			Funding Category
	Total	Federal	Local	Total	Federal	Local	Total	Federal	Local	Total	Federal	Local	Total	Federal	Local	Total	Federal	Local	
	(x\$1000)	(x\$1000)	(x\$1000)	(x\$1000)	(x\$1000)	(x\$1000)	(x\$1000)	(x\$1000)	(x\$1000)	(x\$1000)	(x\$1000)	(x\$1000)	(x\$1000)	(x\$1000)	(x\$1000)	(x\$1000)	(x\$1000)	(x\$1000)	
Phase 5																			
ADVCON	0	0	0	0	0	0	0	0	0	0	0	0	0	0	0	0	5,250	-5,250	NHPP
Total	3,300	4,158	-858	0	4,000	-4,000	630	567	63	11,142	3,728	7,414	10,710	8,463	2,247	0	5,250	-5,250	

OS12 Destination Sign, Upgrade and Replacement



Source: Esri, Maxar, GeoEye, Earthstar Geographics, CNES/Airbus DS, USDA, USGS, AeroGRID, IGN, and the GIS User Community

Project Description:

Replace and/or upgrade the existing destination signs and sign support structures on Interstate Routes H-1, H-2, H-201, and Pali Highway.

Mile Post/s: Not applicable

Complete Streets (CS):

Project will implement: No information available.

Existing Feature/s: No information available.

Project Website: None

Neighborhood(s): Various Locations

Estimated Total Project Cost: \$42,346,000

Total Project Cost Notes:

(May include project costs outside of the 4-year TIP and 2 informational years.)

Project Sponsor: State of Hawaii (FHWA Funded)

Agency Responsible for Carrying Out Project/Phase:

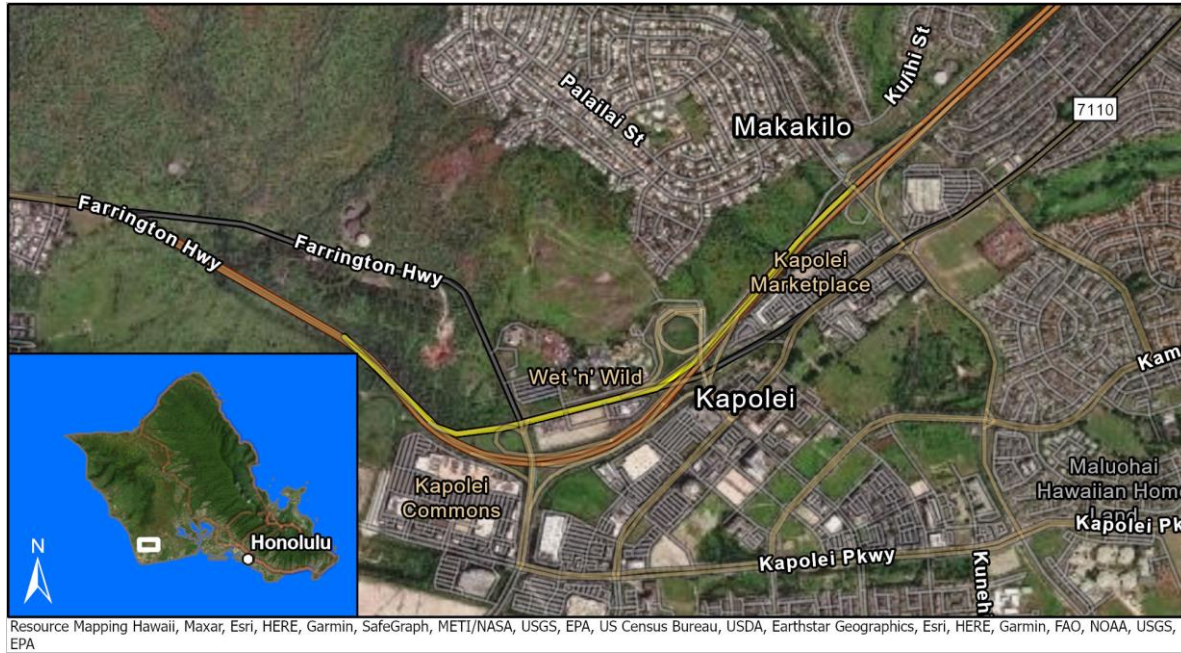
Hawaii Department of Transportation

FOR INFORMATION ONLY

Phase	FFY 2022			FFY 2023			FFY 2024			FFY 2025			FFY 2026			FFY 2027			Funding Category
	Total (x\$1000)	Federal (x\$1000)	Local (x\$1000)	Total (x\$1000)	Federal (x\$1000)	Local (x\$1000)	Total (x\$1000)	Federal (x\$1000)	Local (x\$1000)	Total (x\$1000)	Federal (x\$1000)	Local (x\$1000)	Total (x\$1000)	Federal (x\$1000)	Local (x\$1000)	Total (x\$1000)	Federal (x\$1000)	Local (x\$1000)	
INSP	3,000	2,400	600	0	0	0	0	0	0	0	0	0	0	0	0	0	0	0	NHPP
Phase 3A																			
CON	0	0	0	9,700	2,000	7,700	0	0	0	0	0	0	0	0	0	0	0	0	NHPP
ADVCON	0	0	0	0	0	0	0	2,000	-2,000	0	3,760	-3,760	0	0	0	0	0	0	NHPP
Phase 3B																			
CON	0	0	0	0	0	0	0	0	0	10,500	2,100	8,400	0	0	0	0	0	0	NHPP
ADVCON	0	0	0	0	0	0	0	0	0	0	0	0	0	3,000	-3,000	0	3,300	-3,300	NHPP
Phase 4																			
PE1	0	0	0	572	458	114	0	0	0	0	0	0	0	0	0	0	0	0	NHPP
PE2	0	0	0	0	0	0	832	666	166	0	0	0	0	0	0	0	0	0	NHPP
CON	0	0	0	0	0	0	0	0	0	10,404	4,323	6,081	0	0	0	0	0	0	NHPP
ADVCON	0	0	0	0	0	0	0	0	0	0	0	0	0	4,000	-4,000	0	0	0	NHPP
Phase 5																			
PE1	0	0	0	0	0	0	312	250	62	0	0	0	0	0	0	0	0	0	NHPP
PE2	0	0	0	0	0	0	0	0	0	469	375	94	0	0	0	0	0	0	NHPP
CON	0	0	0	0	0	0	0	0	0	0	0	0	0	0	0	8,160	6,324	1,836	NHPP

OS12 Destination Sign, Upgrade and Replacement

													FOR INFORMATION ONLY						
	FFY 2022			FFY 2023			FFY 2024			FFY 2025			FFY 2026			FFY 2027			
	Total	Federal	Local	Total	Federal	Local	Total	Federal	Local	Total	Federal	Local	Total	Federal	Local	Total	Federal	Local	
Phase	(x\$1000)	(x\$1000)	(x\$1000)	(x\$1000)	(x\$1000)	(x\$1000)	(x\$1000)	(x\$1000)	(x\$1000)	(x\$1000)	(x\$1000)	(x\$1000)	(x\$1000)	(x\$1000)	(x\$1000)	(x\$1000)	(x\$1000)	(x\$1000)	Funding Category
Phase 5																			
ADVCON	0	0	0	0	0	0	0	0	0	0	0	0	0	0	0	0	0	0	NHPP
Phase 6																			
PE1	0	0	0	0	0	0	0	0	0	0	0	0	877	789	88	0	0	0	NHPP
PE2	0	0	0	0	0	0	0	0	0	0	0	0	0	0	0	1,020	918	102	NHPP
CON	0	0	0	0	0	0	0	0	0	0	0	0	0	0	0	0	0	0	NHPP
Total	3,000	2,400	600	10,272	2,458	7,814	1,144	2,916	-1,772	21,373	10,558	10,815	877	7,789	-6,912	9,180	10,542	-1,362	



Project Description:

Phase 3 scope of work is widening Farrington Highway, enlarging the H-1 Freeway loop off-ramp to Kalaheo Blvd, construct the Mauka Frontage Road from Makakilo Drive to Kapolei Interchange, and construct the Palailai Interchange.

Mile Post/s: MP 0.34 to MP 0.79

Complete Streets (CS):

Project will implement: No information available.

Existing Feature/s: No information available.

Project Website: None

Neighborhood(s): Makakilo-Kapolei-Honokai Hale

Estimated Total Project Cost: \$139,000,000

Total Project Cost Notes:

(May include project costs outside of the 4-year TIP and 2 informational years.)

Project Sponsor: State of Hawaii (FHWA Funded)

Agency Responsible for Carrying Out Project/Phase:

Hawaii Department of Transportation

FOR INFORMATION ONLY

Phase	FFY 2022			FFY 2023			FFY 2024			FFY 2025			FFY 2026			FFY 2027			Funding Category
	Total (x\$1000)	Federal (x\$1000)	Local (x\$1000)	Total (x\$1000)	Federal (x\$1000)	Local (x\$1000)	Total (x\$1000)	Federal (x\$1000)	Local (x\$1000)	Total (x\$1000)	Federal (x\$1000)	Local (x\$1000)	Total (x\$1000)	Federal (x\$1000)	Local (x\$1000)	Total (x\$1000)	Federal (x\$1000)	Local (x\$1000)	
Phase 3																			
CON	47,000	9,100	37,900	0	0	0	0	0	0	0	0	0	0	0	0	0	0	0	NHPP
ADVCON	0	0	0	0	4,000	-4,000	0	6,500	-6,500	0	5,000	-5,000	0	5,000	-5,000	0	5,000	-5,000	NHPP
Total	47,000	9,100	37,900	0	4,000	-4,000	0	6,500	-6,500	0	5,000	-5,000	0	5,000	-5,000	0	5,000	-5,000	

OS26 Kalanianaʻole Highway (Route 72) Resurfacing, Poalima Street to Vicinity of Makai Pier



Source: Esri, Maxar, GeoEye, Earthstar Geographics, CNES/Airbus DS, USDA, USGS, AeroGRID, IGN, and the GIS User Community, Sources: Esri, HERE, Garmin, FAO, NOAA, USGS, © OpenStreetMap contributors, and the GIS User Community

Project Description:

Roadway resurfacing of Kalanianaʻole Highway from Poalima Street to Vicinity of Makai Pier.

Mile Post/s: MP 3.35 to MP 5.65

Complete Streets (CS):

Project will implement: No information available.

Existing Feature/s: No information available.

Project Website: None

Neighborhood(s): Waimanalo

Estimated Total Project Cost: \$22,500,000

Total Project Cost Notes:

(May include project costs outside of the 4-year TIP and 2 informational years.)

Project Sponsor: State of Hawaii (FHWA Funded)

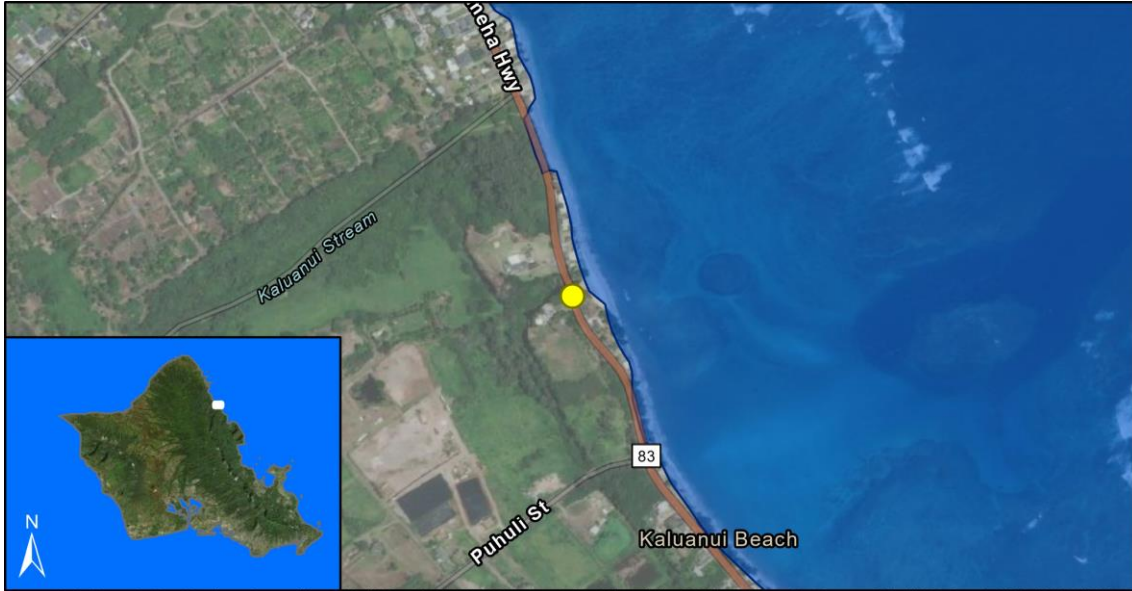
Agency Responsible for Carrying Out Project/Phase:

Hawaii Department of Transportation

FOR INFORMATION ONLY

Phase	FFY 2022			FFY 2023			FFY 2024			FFY 2025			FFY 2026			FFY 2027			Funding Category
	Total (x\$1000)	Federal (x\$1000)	Local (x\$1000)	Total (x\$1000)	Federal (x\$1000)	Local (x\$1000)	Total (x\$1000)	Federal (x\$1000)	Local (x\$1000)	Total (x\$1000)	Federal (x\$1000)	Local (x\$1000)	Total (x\$1000)	Federal (x\$1000)	Local (x\$1000)	Total (x\$1000)	Federal (x\$1000)	Local (x\$1000)	
ADVCON	0	3,000	-3,000	0	3,000	-3,000	0	3,000	-3,000	0	0	0	0	0	0	0	0	0	NHPP
Total	0	3,000	-3,000	0	3,000	-3,000	0	3,000	-3,000	0	0	0	0	0	0	0	0	0	

OS29 Kamehameha Highway (Route 83), Bridge Replacement, Kaluanui Stream Bridge



Source: Esri, Maxar, GeoEye, Earthstar Geographics, CNES/Airbus DS, USDA, USGS, AeroGRID, IGN, and the GIS User Community, Sources: Esri, HERE, Garmin, FAO, NOAA, USGS, © OpenStreetMap contributors, and the GIS User Community

Project Description:

Replace the existing bridge on Kamehameha Highway.

Mile Post/s: Kamehameha Highway: MP 22.50 to 22.70

Complete Streets (CS):

Project will implement: No information available.

Existing Feature/s: No information available.

Project Website: None

Neighborhood(s): Koolauloa

Estimated Total Project Cost: \$20,000,000

Total Project Cost Notes:

(May include project costs outside of the 4-year TIP and 2 informational years.)

Project Sponsor: State of Hawaii (FHWA Funded)

Agency Responsible for Carrying Out Project/Phase:

Hawaii Department of Transportation

FOR INFORMATION ONLY

Phase	FFY 2022			FFY 2023			FFY 2024			FFY 2025			FFY 2026			FFY 2027			Funding Category
	Total (x\$1000)	Federal (x\$1000)	Local (x\$1000)	Total (x\$1000)	Federal (x\$1000)	Local (x\$1000)	Total (x\$1000)	Federal (x\$1000)	Local (x\$1000)	Total (x\$1000)	Federal (x\$1000)	Local (x\$1000)	Total (x\$1000)	Federal (x\$1000)	Local (x\$1000)	Total (x\$1000)	Federal (x\$1000)	Local (x\$1000)	
CON	0	0	0	18,360	1,688	16,672	0	0	0	0	0	0	0	0	0	0	0	0	NHPP
ADVCON	0	0	0	0	0	0	0	3,000	-3,000	0	3,000	-3,000	0	3,000	-3,000	0	4,000	-4,000	NHPP
Total	0	0	0	18,360	1,688	16,672	0	3,000	-3,000	0	3,000	-3,000	0	3,000	-3,000	0	4,000	-4,000	

OS31 Kamehameha Highway (Route 83), Bridge Replacement, Laieloa Stream Bridge



Source: Esri, Maxar, GeoEye, Earthstar Geographics, CNES/Airbus DS, USDA, USGS, AeroGRID, IGN, and the GIS User Community, Sources: Esri, HERE, Garmin, FAO, NOAA, USGS, © OpenStreetMap contributors, and the GIS User Community

Project Description:

Replace the existing concrete slab bridge on Kamehameha Highway in the vicinity of Laie.

Mile Post/s: Kamehameha Highway: MP 18.31

Complete Streets (CS):

Project will implement: No information available.

Existing Feature/s: No information available.

Project Website: None

Neighborhood(s): Koolauloa

Estimated Total Project Cost: \$17,000,000

Total Project Cost Notes:

(May include project costs outside of the 4-year TIP and 2 informational years.)

Project Sponsor: State of Hawaii (FHWA Funded)

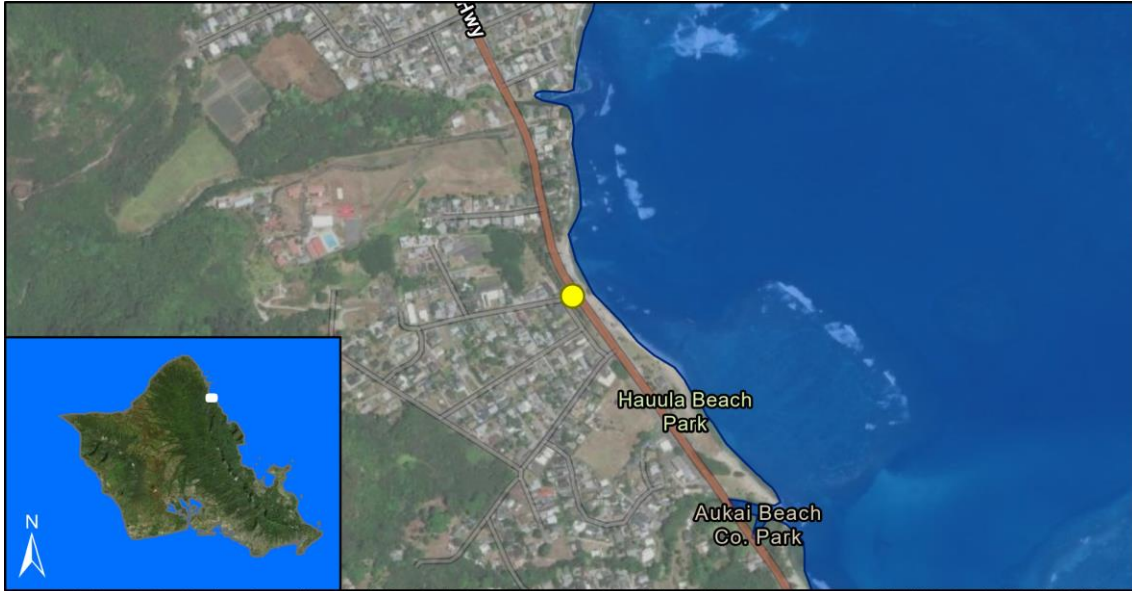
Agency Responsible for Carrying Out Project/Phase:

Hawaii Department of Transportation

FOR INFORMATION ONLY

Phase	FFY 2022			FFY 2023			FFY 2024			FFY 2025			FFY 2026			FFY 2027			Funding Category
	Total (x\$1000)	Federal (x\$1000)	Local (x\$1000)	Total (x\$1000)	Federal (x\$1000)	Local (x\$1000)	Total (x\$1000)	Federal (x\$1000)	Local (x\$1000)	Total (x\$1000)	Federal (x\$1000)	Local (x\$1000)	Total (x\$1000)	Federal (x\$1000)	Local (x\$1000)	Total (x\$1000)	Federal (x\$1000)	Local (x\$1000)	
ROW	0	0	0	735	588	147	0	0	0	0	0	0	0	0	0	0	0	0	NHPP
CON	0	0	0	14,280	1,124	13,156	0	0	0	0	0	0	0	0	0	0	0	0	NHPP
ADVCON	0	0	0	0	0	0	0	2,300	-2,300	0	4,000	-4,000	0	4,000	-4,000	0	0	0	NHPP
Total	0	0	0	15,015	1,712	13,303	0	2,300	-2,300	0	4,000	-4,000	0	4,000	-4,000	0	0	0	

OS36 Kamehameha Highway (Route 83), Bridge Replacement, Waipilopilo Stream Bridge



Source: Esri, Maxar, GeoEye, Earthstar Geographics, CNES/Airbus DS, USDA, USGS, AeroGRID, IGN, and the GIS User Community, Sources: Esri, HERE, Garmin, FAO, NOAA, USGS, © OpenStreetMap contributors, and the GIS User Community

Project Description:

Replace the existing concrete T-bridge on Kamehameha Highway in the vicinity of Hauula.

Mile Post/s: Kamehameha Highway: MP 21.12

Complete Streets (CS):

Project will implement: No information available.

Existing Feature/s: No information available.

Project Website: None

Neighborhood(s): Koolauloa

Estimated Total Project Cost: \$12,300,000

Total Project Cost Notes:

(May include project costs outside of the 4-year TIP and 2 informational years.)

Project Sponsor: State of Hawaii (FHWA Funded)

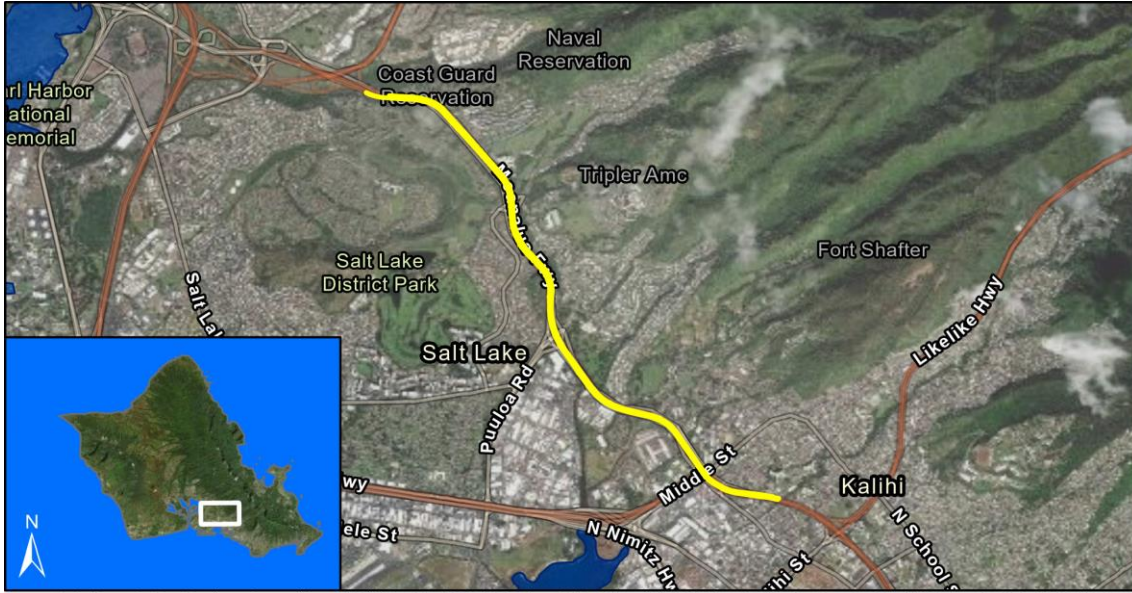
Agency Responsible for Carrying Out Project/Phase:

Hawaii Department of Transportation

FOR INFORMATION ONLY

Phase	FFY 2022			FFY 2023			FFY 2024			FFY 2025			FFY 2026			FFY 2027			Funding Category
	Total (x\$1000)	Federal (x\$1000)	Local (x\$1000)	Total (x\$1000)	Federal (x\$1000)	Local (x\$1000)	Total (x\$1000)	Federal (x\$1000)	Local (x\$1000)	Total (x\$1000)	Federal (x\$1000)	Local (x\$1000)	Total (x\$1000)	Federal (x\$1000)	Local (x\$1000)	Total (x\$1000)	Federal (x\$1000)	Local (x\$1000)	
ROW	0	0	0	1,000	800	200	0	0	0	0	0	0	0	0	0	0	0	0	NHPP
CON	0	0	0	10,000	2,000	8,000	0	0	0	0	0	0	0	0	0	0	0	0	NHPP
ADVCON	0	0	0	0	0	0	0	4,000	-4,000	0	2,000	-2,000	0	0	0	0	0	0	NHPP
Total	0	0	0	11,000	2,800	8,200	0	4,000	-4,000	0	2,000	-2,000	0	0	0	0	0	0	

OS45 Moanalua Freeway (route H-201), Highway Lighting Improvements, Halawa Heights Off-Ramp to Middle Street Overpass



Source: Esri, Maxar, GeoEye, Earthstar Geographics, CNES/Airbus DS, USDA, USGS, AeroGRID, IGN, and the GIS User Community, Sources: Esri, HERE, Garmin, FAO, NOAA, USGS, © OpenStreetMap contributors, and the GIS User Community

Project Description:

Upgrade/replace existing freeway lighting on Moanalua Freeway, from the Halawa Heights westbound off-ramp (milepost 1.12) to the Moanalua/H-1 Freeway merge at Middle Street (milepost 4.09).

Mile Post/s: Moanalua Freeway: MP 1.12 to MP 4.09

Complete Streets (CS):

Project will implement: Not applicable.

Existing Feature/s: Not applicable.

Project Website: None

Neighborhood(s): Various Locations

Estimated Total Project Cost: \$22,000,000

Total Project Cost Notes:

(May include project costs outside of the 4-year TIP and 2 informational years.)

Project Sponsor: State of Hawaii (FHWA Funded)

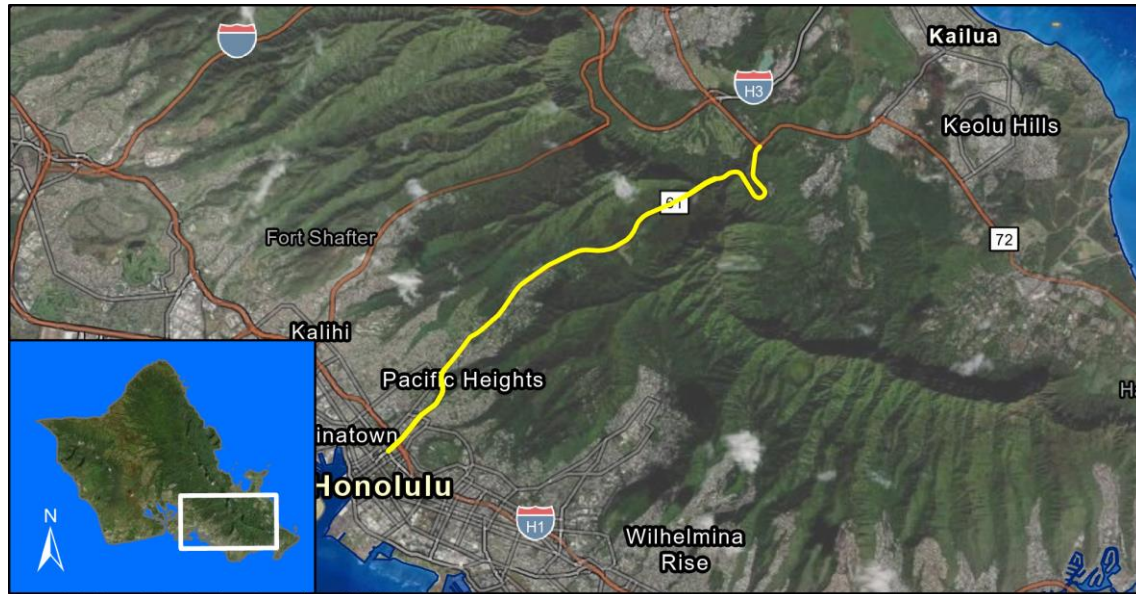
Agency Responsible for Carrying Out Project/Phase:

Hawaii Department of Transportation

FOR INFORMATION ONLY

Phase	FFY 2022			FFY 2023			FFY 2024			FFY 2025			FFY 2026			FFY 2027			Funding Category
	Total (x\$1000)	Federal (x\$1000)	Local (x\$1000)	Total (x\$1000)	Federal (x\$1000)	Local (x\$1000)	Total (x\$1000)	Federal (x\$1000)	Local (x\$1000)	Total (x\$1000)	Federal (x\$1000)	Local (x\$1000)	Total (x\$1000)	Federal (x\$1000)	Local (x\$1000)	Total (x\$1000)	Federal (x\$1000)	Local (x\$1000)	
Phase 2																			
ADVCON	0	7,000	-7,000	0	3,000	-3,000	0	3,000	-3,000	0	0	0	0	0	0	0	0	0	NHPP
Total	0	7,000	-7,000	0	3,000	-3,000	0	3,000	-3,000	0	0	0	0	0	0	0	0	0	

OS62 Pali Hwy (Rte 61) Resurfacing & Lighting Improvements, Vineyard Blvd (Rte 98) to Kamehameha Hwy (Rte 83)



Source: Esri, Maxar, GeoEye, Earthstar Geographics, CNES/Airbus DS, USDA, USGS, AeroGRID, IGN, and the GIS User Community, Sources: Esri, HERE, Garmin, FAO, NOAA, USGS, © OpenStreetMap contributors, and the GIS User Community

Project Description:

Scope of work includes but is not limited to cold planning, resurfacing, reconstruction of weakened pavement, installation of new highway lighting, construction of concrete median barriers, replacement of guardrails in-kind and end treatments, installation of new guardrails, installing bridge rails, and installation of signs and pavement markings.

Mile Post/s:

Complete Streets (CS):

Project will implement: No information available.

Existing Feature/s: No information available.

Project Website: None

Neighborhood(s): Nuuanu-Punchbowl

Estimated Total Project Cost: \$119,500,000

Total Project Cost Notes:

(May include project costs outside of the 4-year TIP and 2 informational years.)

Project Sponsor: State of Hawaii (FHWA Funded)

Agency Responsible for Carrying Out Project/Phase:

Hawaii Department of Transportation

FOR INFORMATION ONLY

	FFY 2022			FFY 2023			FFY 2024			FFY 2025			FFY 2026			FFY 2027			Funding Category
	Total	Federal	Local	Total	Federal	Local	Total	Federal	Local	Total	Federal	Local	Total	Federal	Local	Total	Federal	Local	
Phase	(x\$1000)	(x\$1000)	(x\$1000)	(x\$1000)	(x\$1000)	(x\$1000)	(x\$1000)	(x\$1000)	(x\$1000)	(x\$1000)	(x\$1000)	(x\$1000)	(x\$1000)	(x\$1000)	(x\$1000)	(x\$1000)	(x\$1000)	(x\$1000)	
Phase 1 - Lighting Vineyard Blvd to Kamehameha Hwy & Resurf. Waokanaka St. to Kamehameha Hwy																			
ADVCON	0	2,150	-2,150	0	0	0	0	0	0	0	0	0	0	0	0	0	0	0	NHPP
Phase 2 - Resurfacing, Vineyard Blvd to Waokanaka St																			
ADVCON	0	7,000	-7,000	0	3,000	-3,000	0	4,000	-4,000	0	5,000	-5,000	0	8,000	-8,000	0	0	0	NHPP
Total	0	9,150	-9,150	0	3,000	-3,000	0	4,000	-4,000	0	5,000	-5,000	0	8,000	-8,000	0	0	0	



Source: Esri, Maxar, GeoEye, Earthstar Geographics, CNES/Airbus DS, USDA, USGS, AeroGRID, IGN, and the GIS User Community, Sources: Esri, HERE, Garmin, FAO, NOAA, USGS, © OpenStreetMap contributors, and the GIS User Community

Project Description:

Scope includes, but is not limited to, the installation of milled rumble strips or rumble edge strips on shoulders/median; installation of milled rumble strips on centerline; widening shoulders where possible; installation of speed feedback sign; installation of concrete median barrier at U-turn; and installation of pavement markings and signage.

Mile Post/s:

MP 0 to MP 4.4

Complete Streets (CS):

Project will implement:

No information available.

Existing Feature/s:

No information available.

Project Website:

None

Neighborhood(s):

Waianae Coast

Estimated Total Project Cost:

\$7,200,000

Total Project Cost Notes:

(May include project costs outside of the 4-year TIP and 2 informational years.)

Project Sponsor:

State of Hawaii (FHWA Funded)

Agency Responsible for Carrying Out Project/Phase:

Hawaii Department of Transportation

Phase	FOR INFORMATION ONLY																		Funding Category
	FFY 2022			FFY 2023			FFY 2024			FFY 2025			FFY 2026			FFY 2027			
	Total	Federal	Local	Total	Federal	Local	Total	Federal	Local	Total	Federal	Local	Total	Federal	Local	Total	Federal	Local	
	(x\$1000)	(x\$1000)	(x\$1000)	(x\$1000)	(x\$1000)	(x\$1000)	(x\$1000)	(x\$1000)	(x\$1000)	(x\$1000)	(x\$1000)	(x\$1000)	(x\$1000)	(x\$1000)	(x\$1000)	(x\$1000)	(x\$1000)	(x\$1000)	
CON	7,000	6,300	700	0	0	0	0	0	0	0	0	0	0	0	0	0	0	0	HSIP
Total	7,000	6,300	700	0	0	0	0	0	0	0	0	0	0	0	0	0	0	0	

OS72 Kamehameha Highway (Route 83), Bridge Replacement, Waimanana Bridge



Source: Esri, Maxar, GeoEye, Earthstar Geographics, CNES/Airbus DS, USDA, USGS, AeroGRID, IGN, and the GIS User Community, Sources: Esri, HERE, Garmin, FAO, NOAA, USGS, © OpenStreetMap contributors, and the GIS User Community

Project Description:

Replace the existing bridge on Kamehameha Highway.

Mile Post/s: MP 22.21 to MP 22.22

Complete Streets (CS):

Project will implement: No information available.

Existing Feature/s: No information available.

Project Website: None

Neighborhood(s): Koolauloa

Estimated Total Project Cost: \$11,520,000

Total Project Cost Notes:

(May include project costs outside of the 4-year TIP and 2 informational years.)

Project Sponsor: State of Hawaii (FHWA Funded)

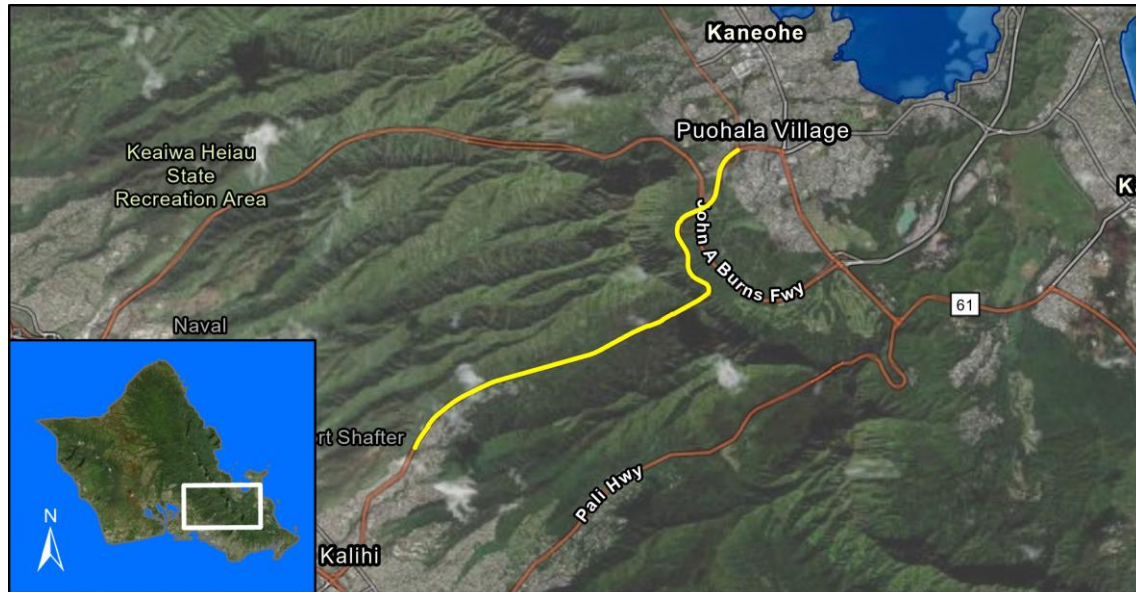
Agency Responsible for Carrying Out Project/Phase:

Hawaii Department of Transportation

FOR INFORMATION ONLY

Phase	FFY 2022			FFY 2023			FFY 2024			FFY 2025			FFY 2026			FFY 2027			Funding Category
	Total (x\$1000)	Federal (x\$1000)	Local (x\$1000)	Total (x\$1000)	Federal (x\$1000)	Local (x\$1000)	Total (x\$1000)	Federal (x\$1000)	Local (x\$1000)	Total (x\$1000)	Federal (x\$1000)	Local (x\$1000)	Total (x\$1000)	Federal (x\$1000)	Local (x\$1000)	Total (x\$1000)	Federal (x\$1000)	Local (x\$1000)	
PE1	0	0	0	698	558	140	0	0	0	0	0	0	0	0	0	0	0	0	NHPP
PE2	0	0	0	0	0	0	998	798	200	0	0	0	0	0	0	0	0	0	NHPP
ROW	0	0	0	0	0	0	0	0	0	793	634	159	0	0	0	0	0	0	NHPP
CON	0	0	0	0	0	0	0	0	0	0	0	0	0	0	0	9,660	4,578	5,082	NHPP
Total	0	0	0	698	558	140	998	798	200	793	634	159	0	0	0	9,660	4,578	5,082	

OS73 Likelike Highway (Route 63), Rehabilitation and Safety Improvements, Emmeline Place to Kahekili Highway



Source: Esri, Maxar, GeoEye, Earthstar Geographics, CNES/Airbus DS, USDA, USGS, AeroGRID, IGN, and the GIS User Community, Sources: Esri, HERE, Garmin, FAO, NOAA, USGS, © OpenStreetMap contributors, and the GIS User Community

Project Description:

Includes, but is not limited to the installation of milled rumble strips or rumble edge stripes on shoulders where possible, high friction surface treatment, speed feedback sign, guardrail end treatment, in-lane pavement markers, LED speed limit signs and chevrons, widen paved shoulders where possible, pavement markings, and signing.

Mile Post/s: MP 2.70 to MP 8.30

Complete Streets (CS):

Project will implement: Not applicable.

Existing Feature/s: Not applicable.

Project Website: None

Neighborhood(s): Kalihi Valley, Kaneohe

Estimated Total Project Cost: \$25,000,000

Total Project Cost Notes:

(May include project costs outside of the 4-year TIP and 2 informational years.)

Project Sponsor: State of Hawaii (FHWA Funded)

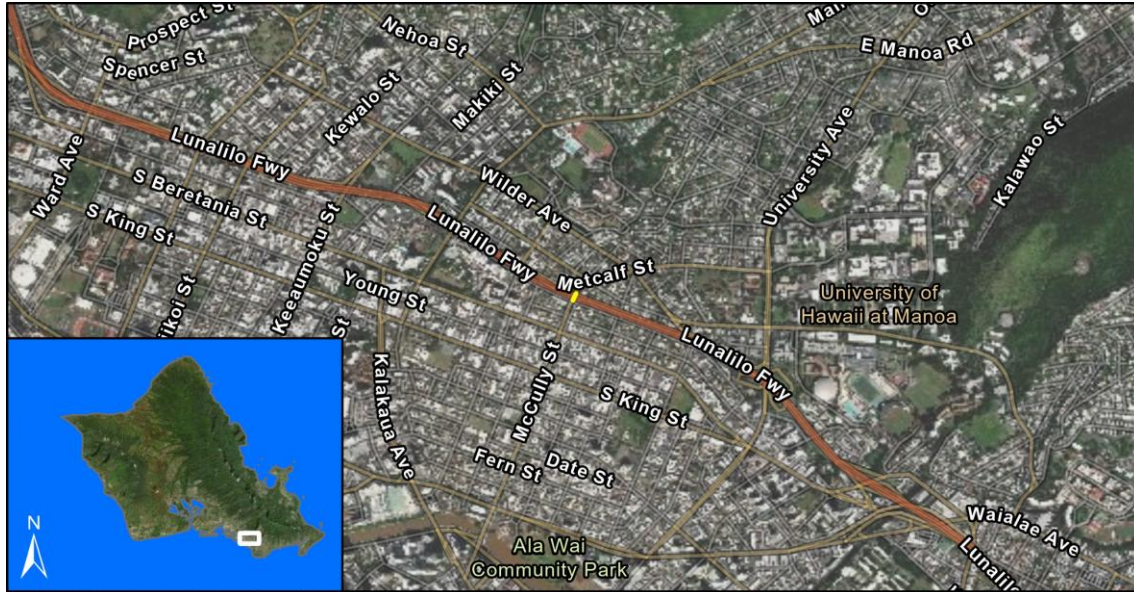
Agency Responsible for Carrying Out Project/Phase:

Hawaii Department of Transportation

FOR INFORMATION ONLY

Phase	FFY 2022			FFY 2023			FFY 2024			FFY 2025			FFY 2026			FFY 2027			Funding Category
	Total (x\$1000)	Federal (x\$1000)	Local (x\$1000)	Total (x\$1000)	Federal (x\$1000)	Local (x\$1000)	Total (x\$1000)	Federal (x\$1000)	Local (x\$1000)	Total (x\$1000)	Federal (x\$1000)	Local (x\$1000)	Total (x\$1000)	Federal (x\$1000)	Local (x\$1000)	Total (x\$1000)	Federal (x\$1000)	Local (x\$1000)	
CON	6,000	4,800	1,200	0	0	0	0	0	0	0	0	0	0	0	0	0	0	0	HSIP
CON	18,000	7,400	10,600	0	0	0	0	0	0	0	0	0	0	0	0	0	0	0	NHPP
ADVCON	0	0	0	0	3,000	-3,000	0	4,000	-4,000	0	0	0	0	0	0	0	0	0	NHPP
Total	24,000	12,200	11,800	0	3,000	-3,000	0	4,000	-4,000	0	0	0	0	0	0	0	0	0	

OS74 Interstate Route H-1, Seismic Retrofit, McCully Street Separation



Source: Esri, Maxar, GeoEye, Earthstar Geographics, CNES/Airbus DS, USDA, USGS, AeroGRID, IGN, and the GIS User Community, Sources: Esri, HERE, Garmin, FAO, NOAA, USGS, © OpenStreetMap contributors, and the GIS User Community

Project Description:

Retrofit interchange structures to meet current seismic standards.

Mile Post/s: MP 23.50

Complete Streets (CS):

Project will implement: Not applicable.

Existing Feature/s: Not applicable.

Project Website: None

Neighborhood(s): McCully-Moiliili

Estimated Total Project Cost: \$3,500,000

Total Project Cost Notes:

(May include project costs outside of the 4-year TIP and 2 informational years.)

Project Sponsor: State of Hawaii (FHWA Funded)

Agency Responsible for Carrying Out Project/Phase:

Hawaii Department of Transportation

FOR INFORMATION ONLY

Phase	FFY 2022			FFY 2023			FFY 2024			FFY 2025			FFY 2026			FFY 2027			Funding Category
	Total (x\$1000)	Federal (x\$1000)	Local (x\$1000)	Total (x\$1000)	Federal (x\$1000)	Local (x\$1000)	Total (x\$1000)	Federal (x\$1000)	Local (x\$1000)	Total (x\$1000)	Federal (x\$1000)	Local (x\$1000)	Total (x\$1000)	Federal (x\$1000)	Local (x\$1000)	Total (x\$1000)	Federal (x\$1000)	Local (x\$1000)	
PE1	0	0	0	435	348	87	0	0	0	0	0	0	0	0	0	0	0	0	NHPP
PE2	0	0	0	0	0	0	0	0	0	462	370	92	0	0	0	0	0	0	NHPP
CON	0	0	0	0	0	0	0	0	0	0	0	0	2,550	2,040	510	0	0	0	NHPP
Total	0	0	0	435	348	87	0	0	0	462	370	92	2,550	2,040	510	0	0	0	

OS75 Kamehameha Highway (Route 83), Rockfall Protection, Waimea Bay



Source: Esri, Maxar, GeoEye, Earthstar Geographics, CNES/Airbus DS, USDA, USGS, AeroGRID, IGN, and the GIS User Community, Sources: Esri, HERE, Garmin, FAO, NOAA, USGS, © OpenStreetMap contributors, and the GIS User Community

Project Description:

Construct various rockfall/slope protection and slope stabilization mitigation measures.

Mile Post/s: MP 5.40 to MP 5.52

Complete Streets (CS):

Project will implement: No information available.

Existing Feature/s: No information available.

Project Website: None

Neighborhood(s): North Shore

Estimated Total Project Cost: \$35,450,000

Total Project Cost Notes:

(May include project costs outside of the 4-year TIP and 2 informational years.)

Project Sponsor: State of Hawaii (FHWA Funded)

Agency Responsible for Carrying Out Project/Phase:

Hawaii Department of Transportation

FOR INFORMATION ONLY

Phase	FFY 2022			FFY 2023			FFY 2024			FFY 2025			FFY 2026			FFY 2027			Funding Category
	Total (x\$1000)	Federal (x\$1000)	Local (x\$1000)	Total (x\$1000)	Federal (x\$1000)	Local (x\$1000)	Total (x\$1000)	Federal (x\$1000)	Local (x\$1000)	Total (x\$1000)	Federal (x\$1000)	Local (x\$1000)	Total (x\$1000)	Federal (x\$1000)	Local (x\$1000)	Total (x\$1000)	Federal (x\$1000)	Local (x\$1000)	
Haleiwa																			
PE2	0	0	0	0	0	0	857	686	171	0	0	0	0	0	0	0	0	0	NHPP
CON	0	0	0	0	0	0	0	0	0	21,000	6,400	14,600	0	0	0	0	0	0	NHPP
ADVCON	0	0	0	0	0	0	0	0	0	0	0	0	0	5,000	-5,000	0	5,400	-5,400	NHPP
Sunset Beach																			
CON	0	0	0	0	0	0	0	0	0	0	0	0	0	0	0	9,261	3,476	5,785	NHPP
Waimea Bay																			
ROW	0	0	0	0	0	0	536	429	107	0	0	0	0	0	0	0	0	0	NHPP
Total	0	0	0	0	0	0	1,393	1,115	278	21,000	6,400	14,600	0	5,000	-5,000	9,261	8,876	385	



Source: Esri, Maxar, GeoEye, Earthstar Geographics, CNES/Airbus DS, USDA, USGS, AeroGRID, IGN, and the GIS User Community

Project Description:

Develop and construct shoreline protection measures to better protect roadways from flooding and erosion as identified and prioritized in the Statewide Shoreline Protection Program. This funding is for the Oahu District Sub-Program.

Mile Post/s: Not applicable

Complete Streets (CS):

Project will implement: Not applicable

Existing Feature/s: Not applicable

Project Website: None

Neighborhood(s): Various Locations

Estimated Total Project Cost: \$70,000,000

Total Project Cost Notes:

(May include project costs outside of the 4-year TIP and 2 informational years.)

Project Sponsor: State of Hawaii (FHWA Funded)

Agency Responsible for Carrying Out Project/Phase:

Hawaii Department of Transportation

FOR INFORMATION ONLY

Phase	FFY 2022			FFY 2023			FFY 2024			FFY 2025			FFY 2026			FFY 2027			Funding Category	
	Total (x\$1000)	Federal (x\$1000)	Local (x\$1000)	Total (x\$1000)	Federal (x\$1000)	Local (x\$1000)	Total (x\$1000)	Federal (x\$1000)	Local (x\$1000)	Total (x\$1000)	Federal (x\$1000)	Local (x\$1000)	Total (x\$1000)	Federal (x\$1000)	Local (x\$1000)	Total (x\$1000)	Federal (x\$1000)	Local (x\$1000)		
Priority 1 - Kamehameha Hwy at Kaaawa Elementary																				
CON	0	0	0	3,000	2,400	600	0	0	0	0	0	0	0	0	0	0	0	0	NHPP	
Priority 1 - Kamehameha Hwy at Kualoa and Kalaniana'ole Hwy at Bell St																				
CON	0	0	0	0	0	0	2,100	1,680	420	0	0	0	0	0	0	0	0	0	NHPP	
Priority 1, Phase 1 - Kamehameha Hwy																				
ROW	0	0	0	0	0	0	1,040	832	208	0	0	0	0	0	0	0	0	0	NHPP	
CON	0	0	0	0	0	0	0	0	0	21,000	3,000	18,000	0	0	0	0	0	0	NHPP	
ADVCON	0	0	0	0	0	0	0	0	0	0	0	0	0	3,800	-3,800	0	10,000	-10,000	NHPP	
Priority 1, Phase 2 - Kamehameha Hwy																				
ROW	0	0	0	0	0	0	500	400	100	0	0	0	0	0	0	0	0	0	NHPP	
CON	0	0	0	0	0	0	0	0	0	20,000	3,000	17,000	0	0	0	0	0	0	NHPP	
ADVCON	0	0	0	0	0	0	0	0	0	0	0	0	0	5,000	-5,000	0	8,000	-8,000	NHPP	
Priority 2 - Farrington Hwy at Keaau Stream Bridge																				
PE1	0	0	0	0	0	0	0	0	0	570	456	114	0	0	0	0	0	0	NHPP	
PE2	0	0	0	0	0	0	0	0	0	0	0	0	0	0	0	375	300	75	NHPP	

OS79 Shoreline Protection/Mitigation Program

													FOR INFORMATION ONLY						Funding Category
FFY 2022			FFY 2023			FFY 2024			FFY 2025			FFY 2026			FFY 2027				
	Total	Federal	Local	Total	Federal	Local	Total	Federal	Local	Total	Federal	Local	Total	Federal	Local	Total	Federal	Local	
Phase	(x\$1000)	(x\$1000)	(x\$1000)	(x\$1000)	(x\$1000)	(x\$1000)	(x\$1000)	(x\$1000)	(x\$1000)	(x\$1000)	(x\$1000)	(x\$1000)	(x\$1000)	(x\$1000)	(x\$1000)	(x\$1000)	(x\$1000)	(x\$1000)	
Priority 2 - Farrington Hwy at Keaa Stream Bridge																			
ROW	0	0	0	0	0	0	0	0	0	0	0	0	0	0	0	52	41	11	NHPP
Priority 2 - Kalanianaʻole Hwy at Kaupo Cave																			
PE1	0	0	0	0	0	0	0	0	0	0	0	0	0	0	0	1,215	972	243	NHPP
Total	0	0	0	3,000	2,400	600	3,640	2,912	728	41,570	6,456	35,114	0	8,800	-8,800	1,642	19,313	-17,671	

OS82 Interstate Route H-1 Improvements, Eastbound, Ola Lane Overpass to Vineyard Boulevard



Source: Esri, Maxar, GeoEye, Earthstar Geographics, CNES/Airbus DS, USDA, USGS, AeroGRID, IGN, and the GIS User Community, Sources: Esri, HERE, Garmin, FAO, NOAA, USGS, © OpenStreetMap contributors, and the GIS User Community

Project Description:

Eastbound Operational/congestion improvements, and structural improvements to bridges within the limits.

Mile Post/s: 18.97 - 20.25

Complete Streets (CS):

Project will implement: No information available.

Existing Feature/s: No information available.

Project Website: None

Neighborhood(s): Kalihi-Palama

Estimated Total Project Cost: \$90,000,000

Total Project Cost Notes:

(May include project costs outside of the 4-year TIP and 2 informational years.)

Project Sponsor: State of Hawaii (FHWA Funded)

Agency Responsible for Carrying Out Project/Phase:

Hawaii Department of Transportation

FOR INFORMATION ONLY

Phase	FFY 2022			FFY 2023			FFY 2024			FFY 2025			FFY 2026			FFY 2027			Funding Category
	Total (x\$1000)	Federal (x\$1000)	Local (x\$1000)	Total (x\$1000)	Federal (x\$1000)	Local (x\$1000)	Total (x\$1000)	Federal (x\$1000)	Local (x\$1000)	Total (x\$1000)	Federal (x\$1000)	Local (x\$1000)	Total (x\$1000)	Federal (x\$1000)	Local (x\$1000)	Total (x\$1000)	Federal (x\$1000)	Local (x\$1000)	
CON	0			84,000	2,000	82,000	0	0	0	0	0	0	0	0	0	0	0	0	NHPP
ADVCON	0	0	0	0	0	0	0	8,000	-8,000	0	5,000	-5,000	0	24,200	-24,200	0	28,000	-28,000	NHPP
Total	0	0	0	84,000	2,000	82,000	0	8,000	-8,000	0	5,000	-5,000	0	24,200	-24,200	0	28,000	-28,000	

OS-21-43 Kamehameha Highway (Route 99) Seismic Retrofit, Pearl Harbor Interchange, Structure #2



Source: Esri, Maxar, GeoEye, Earthstar Geographics, CNES/Airbus DS, USDA, USGS, AeroGRID, IGN, and the GIS User Community, Sources: Esri, HERE, Garmin, FAO, NOAA, USGS, © OpenStreetMap contributors, and the GIS User Community

Project Description:

Retrofit interchange structures to meet current seismic standards. All bridges identified to be potentially vulnerable to earthquake damage/collapse need to be analyzed and designed for retrofitting strategies to prevent their collapse during a credible earthquake. The type and scope of the retrofit work can only be determined through the analysis.

Mile Post/s: MP 23.2 to 23.4

Complete Streets (CS):

Project will implement: No information available.

Existing Feature/s: No information available.

Project Website: None

Neighborhood(s):

Estimated Total Project Cost: \$5,000,000

Total Project Cost Notes:

(May include project costs outside of the 4-year TIP and 2 informational years.)

Project Sponsor: State of Hawaii (FHWA Funded)

Agency Responsible for Carrying Out Project/Phase:

Hawaii Department of Transportation

FOR INFORMATION ONLY

Phase	FFY 2022			FFY 2023			FFY 2024			FFY 2025			FFY 2026			FFY 2027			Funding Category
	Total (x\$1000)	Federal (x\$1000)	Local (x\$1000)	Total (x\$1000)	Federal (x\$1000)	Local (x\$1000)	Total (x\$1000)	Federal (x\$1000)	Local (x\$1000)	Total (x\$1000)	Federal (x\$1000)	Local (x\$1000)	Total (x\$1000)	Federal (x\$1000)	Local (x\$1000)	Total (x\$1000)	Federal (x\$1000)	Local (x\$1000)	
PE1	0	0	0	510	408	102	0	0	0	0	0	0	0	0	0	0	0	0	NHPP
PE2	0	0	0	0	0	0	0	0	0	704	563	141	0	0	0	0	0	0	NHPP
CON	0	0	0	0	0	0	0	0	0	0	0	0	3,750	3,000	750	0	0	0	NHPP
Total	0	0	0	510	408	102	0	0	0	704	563	141	3,750	3,000	750	0	0	0	

OS-21-47 Interstate Route H-1 Highway Lighting Improvements, Kaimakani Overpass to Gulick Avenue



Source: Esri, Maxar, GeoEye, Earthstar Geographics, CNES/Airbus DS, USDA, USGS, AeroGRID, IGN, and the GIS User Community, Sources: Esri, HERE, Garmin, FAO, NOAA, USGS, © OpenStreetMap contributors, and the GIS User Community

Project Description:

Upgrade highway lighting to standards. Installation of new highway lighting system consist of new light poles and conduits, LED fixtures, trenching for conduits, conduits, foundations/barriers, power equipment, erosion control, and traffic control.

Mile Post/s: MP 12.83 to MP 19

Complete Streets (CS):

Project will implement: No information available.

Existing Feature/s: No information available.

Project Website: Not available

Neighborhood(s): Aliamanu-Salt Lake-Foster Village

Estimated Total Project Cost: \$40,000,000

Total Project Cost Notes:

(May include project costs outside of the 4-year TIP and 2 informational years.)

Project Sponsor: State of Hawaii (FHWA Funded)

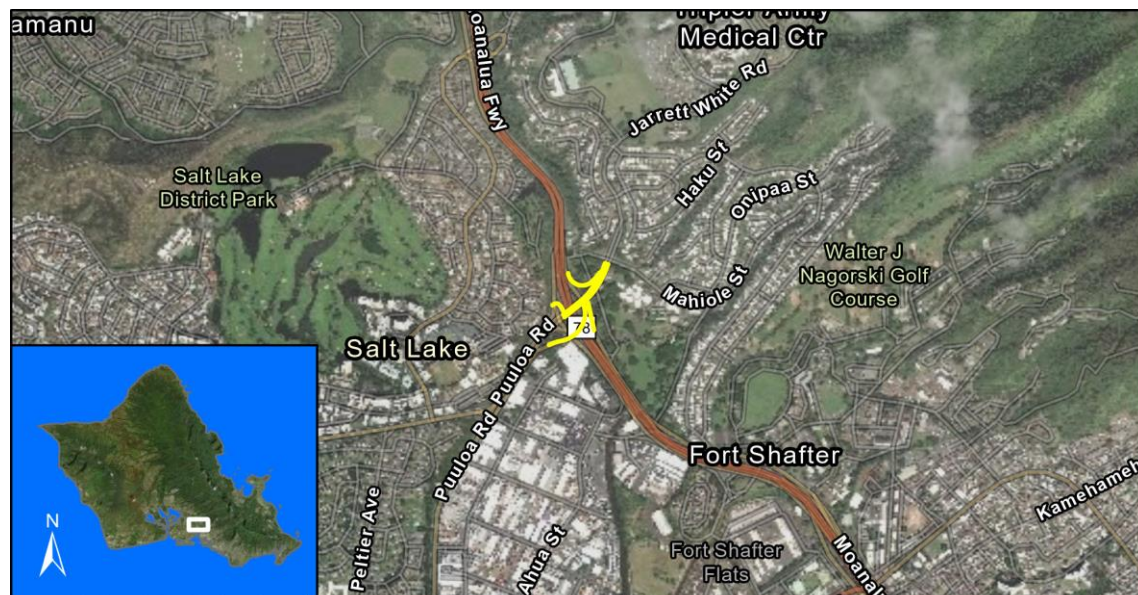
Agency Responsible for Carrying Out Project/Phase:

Hawaii Department of Transportation

FOR INFORMATION ONLY

Phase	FFY 2022			FFY 2023			FFY 2024			FFY 2025			FFY 2026			FFY 2027			Funding Category
	Total (x\$1000)	Federal (x\$1000)	Local (x\$1000)	Total (x\$1000)	Federal (x\$1000)	Local (x\$1000)	Total (x\$1000)	Federal (x\$1000)	Local (x\$1000)	Total (x\$1000)	Federal (x\$1000)	Local (x\$1000)	Total (x\$1000)	Federal (x\$1000)	Local (x\$1000)	Total (x\$1000)	Federal (x\$1000)	Local (x\$1000)	
Phase 1 MP 12.83 to MP 16																			
CON	0	0	0	0	0	0	30,000	5,000	25,000	0	0	0	0	0	0	0	0	0	NHPP
ADVCON	0	0	0	0	0	0	0	0	0	0	3,000	-3,000	0	6,000	-6,000	0	10,000	-10,000	NHPP
Phase 2 MP 16 to MP 19																			
CON	0	0	0	0	0	0	0	0	0	0	0	0	0	0	0	6,240	4,992	1,248	NHPP
Total	0	0	0	0	0	0	30,000	5,000	25,000	0	3,000	-3,000	0	6,000	-6,000	6,240	14,992	-8,752	

OS-21-51 Moanalua Freeway, (Interstate Route H-201) Seismic Retrofit, Puuloa Interchange (Five Structures)



Source: Esri, Maxar, GeoEye, Earthstar Geographics, CNES/Airbus DS, USDA, USGS, AeroGRID, IGN, and the GIS User Community, Sources: Esri, HERE, Garmin, FAO, NOAA, USGS, © OpenStreetMap contributors, and the GIS User Community

Project Description:

Retrofit interchange structures to meet current seismic standards. All bridges identified to be potentially vulnerable to earthquake damage/collapse need to be analyzed and designed for retrofitting strategies to prevent their collapse during a credible earthquake. The type and scope of the retrofit work can only be determined through the analysis.

Mile Post/s: MP 2.68 to 2.94

Complete Streets (CS):

Project will implement: No information available.

Existing Feature/s: No information available.

Project Website: None

Neighborhood(s): Aliamano-Salt Lake-Foster Village

Estimated Total Project Cost: \$15,000,000

Total Project Cost Notes:

(May include project costs outside of the 4-year TIP and 2 informational years.)

Project Sponsor: State of Hawaii (FHWA Funded)

Agency Responsible for Carrying Out Project/Phase:

Hawaii Department of Transportation

FOR INFORMATION ONLY

Phase	FFY 2022			FFY 2023			FFY 2024			FFY 2025			FFY 2026			FFY 2027			Funding Category
	Total (x\$1000)	Federal (x\$1000)	Local (x\$1000)	Total (x\$1000)	Federal (x\$1000)	Local (x\$1000)	Total (x\$1000)	Federal (x\$1000)	Local (x\$1000)	Total (x\$1000)	Federal (x\$1000)	Local (x\$1000)	Total (x\$1000)	Federal (x\$1000)	Local (x\$1000)	Total (x\$1000)	Federal (x\$1000)	Local (x\$1000)	
PE1	0	0	0	0	0	0	1,050	840	210	0	0	0	0	0	0	0	0	0	NHPP
PE2	0	0	0	0	0	0	0	0	0	0	0	0	1,654	1,323	331	0	0	0	NHPP
CON	0	0	0	0	0	0	0	0	0	0	0	0	12,000	7,600	4,400	0	0	0	NHPP
ADVCON	0	0	0	0	0	0	0	0	0	0	0	0	0	0	0	0	2,000	-2,000	NHPP
Total	0	0	0	0	0	0	1,050	840	210	0	0	0	13,654	8,923	4,731	0	2,000	-2,000	

OS-21-52 Likelike Highway (Route 63) Seismic Retrofit, Kalihi Stream Bridges



Source: Esri, Maxar, GeoEye, Earthstar Geographics, CNES/Airbus DS, USDA, USGS, AeroGRID, IGN, and the GIS User Community, Sources: Esri, HERE, Garmin, FAO, NOAA, USGS, © OpenStreetMap contributors, and the GIS User Community

Project Description:

Retrofit bridge structures to meet current seismic standards. All bridges identified to be potentially vulnerable to earthquake damage/collapse need to be analyzed and designed for retrofitting strategies to prevent their collapse during a credible earthquake. The type and scope of the retrofit work can only be determined through the analysis.

Mile Post/s: MP 1.6 to 1.75

Complete Streets (CS):

Project will implement: No information available.

Existing Feature/s: No information available.

Project Website: None

Neighborhood(s): Kalihi Valley

Estimated Total Project Cost: \$11,300,000

Total Project Cost Notes:

(May include project costs outside of the 4-year TIP and 2 informational years.)

Project Sponsor: State of Hawaii (FHWA Funded)

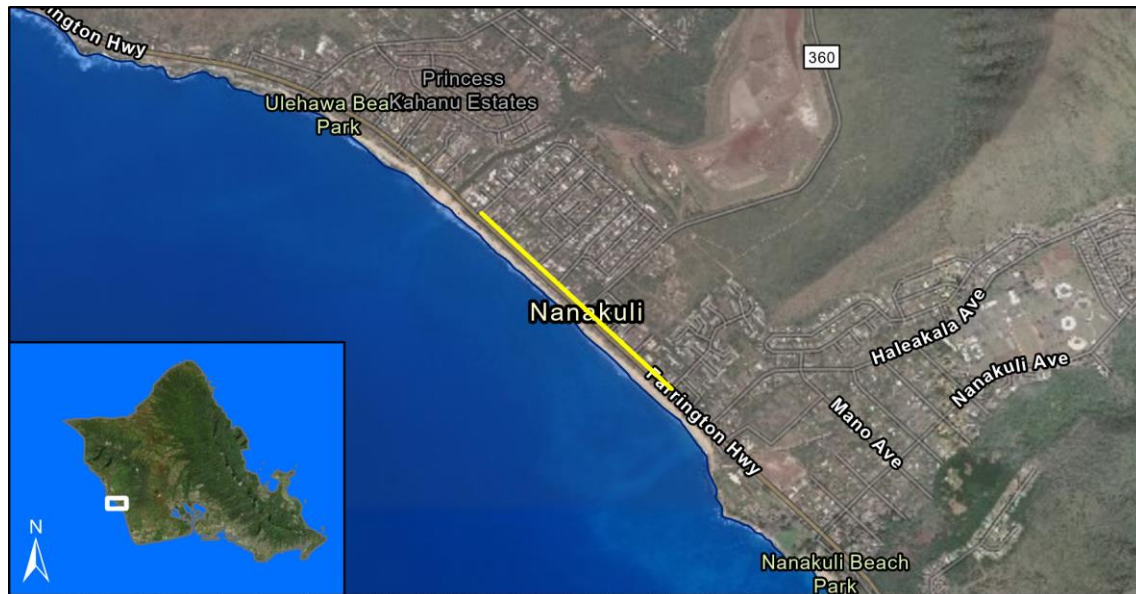
Agency Responsible for Carrying Out Project/Phase:

Hawaii Department of Transportation

FOR INFORMATION ONLY

Phase	FFY 2022			FFY 2023			FFY 2024			FFY 2025			FFY 2026			FFY 2027			Funding Category
	Total (x\$1000)	Federal (x\$1000)	Local (x\$1000)	Total (x\$1000)	Federal (x\$1000)	Local (x\$1000)	Total (x\$1000)	Federal (x\$1000)	Local (x\$1000)	Total (x\$1000)	Federal (x\$1000)	Local (x\$1000)	Total (x\$1000)	Federal (x\$1000)	Local (x\$1000)	Total (x\$1000)	Federal (x\$1000)	Local (x\$1000)	
PE1	0	0	0	0	0	0	0	0	0	710	568	142	0	0	0	0	0	0	NHPP
PE2	0	0	0	0	0	0	0	0	0	0	0	0	0	0	0	620	496	124	NHPP
Total	0	0	0	0	0	0	0	0	0	710	568	142	0	0	0	620	496	124	

OS-21-53 Farrington Highway Widening, Helelua to Mohihi



Source: Esri, Maxar, GeoEye, Earthstar Geographics, CNES/Airbus DS, USDA, USGS, AeroGRID, IGN, and the GIS User Community, Sources: Esri, HERE, Garmin, FAO, NOAA, USGS, © OpenStreetMap contributors, and the GIS User Community

Project Description:

A 5th lane will be installed on Farrington Highway, from Helelua Street to Mohihi Street. The lane will be used as a turnout lane and as a contraflow lane during peak travel times. Includes reconstructing the roadway and installing signs, striping and pavement markings.

Mile Post/s: MP 5.62 to 6.32

Complete Streets (CS):

Project will implement: No information available.

Existing Feature/s: No information available.

Project Website: None

Neighborhood(s): Nanakuli-Mailii

Estimated Total Project Cost: \$34,500,000

Total Project Cost Notes:

(May include project costs outside of the 4-year TIP and 2 informational years.)

Project Sponsor: State of Hawaii (FHWA Funded)

Agency Responsible for Carrying Out Project/Phase:

Hawaii Department of Transportation

FOR INFORMATION ONLY

Phase	FFY 2022			FFY 2023			FFY 2024			FFY 2025			FFY 2026			FFY 2027			Funding Category
	Total (x\$1000)	Federal (x\$1000)	Local (x\$1000)	Total (x\$1000)	Federal (x\$1000)	Local (x\$1000)	Total (x\$1000)	Federal (x\$1000)	Local (x\$1000)	Total (x\$1000)	Federal (x\$1000)	Local (x\$1000)	Total (x\$1000)	Federal (x\$1000)	Local (x\$1000)	Total (x\$1000)	Federal (x\$1000)	Local (x\$1000)	
CON	0	0	0	0	0	0	32,000	10,600	21,400	0	0	0	0	0	0	0	0	0	NHPP
ADVCON	0	0	0	0	0	0	0	0	0	0	5,000	-5,000	0	5,000	-5,000	0	5,000	-5,000	NHPP
Total	0	0	0	0	0	0	32,000	10,600	21,400	0	5,000	-5,000	0	5,000	-5,000	0	5,000	-5,000	

OS-22-60 Adaptive Traffic Signal Control Technology & Traffic Signal Controller Installation at Various Locations, Oahu



Source: Esri, Maxar, GeoEye, Earthstar Geographics, CNES/Airbus DS, USDA, USGS, AeroGRID, IGN, and the GIS User Community

Project Description:

Implement Adaptive Traffic Control Systems (ATCS) at various locations on Oahu. ATCS are a potential method of dealing with congestion, which adjusts signal timing to accommodate changing traffic patterns. Work may include providing and installing hardware, software, vehicle detection, and staff training.

Mile Post/s:

Complete Streets (CS):

Project will implement: Not applicable.

Existing Feature/s: Not applicable.

Project Website: None

Neighborhood(s): Various Locations

Estimated Total Project Cost: \$41,000,000

Total Project Cost Notes:

(May include project costs outside of the 4-year TIP and 2 informational years.)

Project Sponsor: State of Hawaii (FHWA Funded)

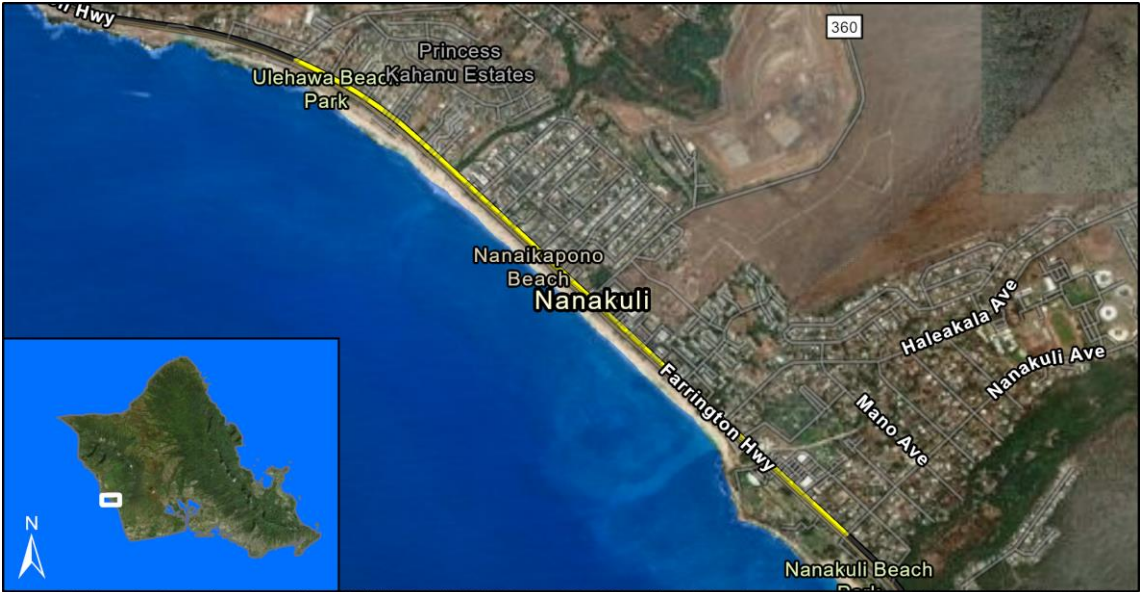
Agency Responsible for Carrying Out Project/Phase:

Hawaii Department of Transportation

FOR INFORMATION ONLY

Phase	FFY 2022			FFY 2023			FFY 2024			FFY 2025			FFY 2026			FFY 2027			Funding Category	
	Total (x\$1000)	Federal (x\$1000)	Local (x\$1000)	Total (x\$1000)	Federal (x\$1000)	Local (x\$1000)	Total (x\$1000)	Federal (x\$1000)	Local (x\$1000)	Total (x\$1000)	Federal (x\$1000)	Local (x\$1000)	Total (x\$1000)	Federal (x\$1000)	Local (x\$1000)	Total (x\$1000)	Federal (x\$1000)	Local (x\$1000)		
Phase I																				
CON	11,000	3,214	7,786	0	0	0	0	0	0	0	0	0	0	0	0	0	0	0	0	STBG
Phase II																				
CON	26,289	0	26,289	0	0	0	0	0	0	0	0	0	0	0	0	0	0	0	0	STBG
ADVCON	0	0	0	0	3,000	-3,000	0	4,617	-4,617	0	4,000	-4,000	0	10,000	-10,000	0	5,000	-5,000	0	STBG
Total	37,289	3,214	34,075	0	3,000	-3,000	0	4,617	-4,617	0	4,000	-4,000	0	10,000	-10,000	0	5,000	-5,000	0	

OS-22-62 Farrington Highway (RTE 93) Sidewalk Improvements, Hakimo Rd to Nanakuli Ave, MP 6.89 to MP 5.06



Source: Esri, Maxar, GeoEye, Earthstar Geographics, CNES/Airbus DS, USDA, USGS, AeroGRID, IGN, and the GIS User Community, Sources: Esri, HERE, Garmin, FAO, NOAA, USGS, © OpenStreetMap contributors, and the GIS User Community

Project Description:
 Construct new PCC sidewalk and ramps, drainage facilities, utility relocations and adjustments, driveway adjustments, grade adjustment walls, modifications/adjustments to existing traffic appurtenances (signs, traffic signals, etc).

Mile Post/s: 6.89 to 5.06

Complete Streets (CS):
Project will implement: No information available.

Existing Feature/s: No information available.

Project Website: None

Neighborhood(s): Nanakuli-Mailii

Estimated Total Project Cost: \$17,000,000

Total Project Cost Notes:
 (May include project costs outside of the 4-year TIP and 2 informational years.)

Project Sponsor: State of Hawaii (FHWA Funded)

Agency Responsible for Carrying Out Project/Phase:
 Hawaii Department of Transportation

Phase	FOR INFORMATION ONLY																		Funding Category
	FFY 2022			FFY 2023			FFY 2024			FFY 2025			FFY 2026			FFY 2027			
	Total	Federal	Local	Total	Federal	Local	Total	Federal	Local	Total	Federal	Local	Total	Federal	Local	Total	Federal	Local	
	(x\$1000)	(x\$1000)	(x\$1000)	(x\$1000)	(x\$1000)	(x\$1000)	(x\$1000)	(x\$1000)	(x\$1000)	(x\$1000)	(x\$1000)	(x\$1000)	(x\$1000)	(x\$1000)	(x\$1000)	(x\$1000)	(x\$1000)	(x\$1000)	
CON	0	0	0	15,300	200	15,100	0	0	0	0	0	0	0	0	0	0	0	0	NHPP
ADVCON	0	0	0	0	0	0	0	3,000	-3,000	0	3,000	-3,000	0	3,000	-3,000	0	3,000	-3,000	NHPP
Total	0	0	0	15,300	200	15,100	0	3,000	-3,000	0	3,000	-3,000	0	3,000	-3,000	0	3,000	-3,000	

FHWA Funded Projects: City and County of Honolulu



Source: Esri, Maxar, GeoEye, Earthstar Geographics, CNES/Airbus DS, USDA, USGS, AeroGRID, IGN, and the GIS User Community

Project Description:

An on-going islandwide program for the implementation of the Oahu Bicycle Master Plan improvements, the development of new projects, and the upgrade of existing bicycle projects.

Mile Post/s:

Complete Streets (CS):

Project will implement: Bikeway improvements; new bikeway projects; and bikeway upgrades.

Existing Feature/s: See Oahu Bicycle Master Plan.

Project Website: <https://www.honolulu.gov/bicycle/bikeplanupdate.html>

Neighborhood(s): Island wide

Estimated Total Project Cost: \$18,018,000

Total Project Cost Notes:

(May include project costs outside of the 4-year TIP and 2 informational years.)

Project Sponsor: City and County of Honolulu

Agency Responsible for Carrying Out Project/Phase:

City Department of Transportation Services

FOR INFORMATION ONLY

Phase	FFY 2022			FFY 2023			FFY 2024			FFY 2025			FFY 2026			FFY 2027			Funding Category	
	Total (x\$1000)	Federal (x\$1000)	Local (x\$1000)	Total (x\$1000)	Federal (x\$1000)	Local (x\$1000)	Total (x\$1000)	Federal (x\$1000)	Local (x\$1000)	Total (x\$1000)	Federal (x\$1000)	Local (x\$1000)	Total (x\$1000)	Federal (x\$1000)	Local (x\$1000)	Total (x\$1000)	Federal (x\$1000)	Local (x\$1000)		
Kailua-Lanikai Bike Path																				
PE1	0	0	0	510	408	102	0	0	0	0	0	0	0	0	0	0	0	0	0	STBG
PE2	0	0	0	0	0	0	0	0	0	204	163	41	0	0	0	0	0	0	0	STBG
ROW	0	0	0	1	0	1	0	0	0	0	0	0	0	0	0	0	0	0	0	STBG
CON	0	0	0	0	0	0	0	0	0	0	0	0	1,020	816	204	0	0	0	0	STBG
INSP	0	0	0	0	0	0	0	0	0	0	0	0	255	204	51	0	0	0	0	STBG
Keolu Drive Complete Streets																				
PE1	0	0	0	1,000	800	200	0	0	0	0	0	0	0	0	0	0	0	0	0	STBG
PE2	0	0	0	0	0	0	0	0	0	500	400	100	0	0	0	0	0	0	0	STBG
CON	0	0	0	0	0	0	0	0	0	0	0	0	5,700	4,560	1,140	0	0	0	0	STBG
INSP	0	0	0	0	0	0	0	0	0	0	0	0	1,425	1,140	285	0	0	0	0	STBG
South Shore Bikeway (EW Transportation Corridor Planning)																				
PE1	0	0	0	6,000	4,800	1,200	0	0	0	0	0	0	0	0	0	0	0	0	0	HIP-CPF/CDS
Waipahu Depot Shared Use Path																				
PE2	0	0	0	0	0	0	103	82	21	0	0	0	0	0	0	0	0	0	0	STBG
CON	0	0	0	0	0	0	0	0	0	0	0	0	1,040	832	208	0	0	0	0	STBG

OC2

Bikeway Improvements Program

													FOR INFORMATION ONLY						Funding Category
FFY 2022			FFY 2023			FFY 2024			FFY 2025			FFY 2026			FFY 2027				
Total	Federal	Local	Total	Federal	Local	Total	Federal	Local	Total	Federal	Local	Total	Federal	Local	Total	Federal	Local		
Phase	(x\$1000)	(x\$1000)	(x\$1000)	(x\$1000)	(x\$1000)	(x\$1000)	(x\$1000)	(x\$1000)	(x\$1000)	(x\$1000)	(x\$1000)	(x\$1000)	(x\$1000)	(x\$1000)	(x\$1000)	(x\$1000)	(x\$1000)		
Waipahu Depot Shared Use Path																			
INSP	0	0	0	0	0	0	0	0	0	0	0	0	260	208	52	0	0	0	STBG
Total	0	0	0	7,511	6,008	1,503	103	82	21	704	563	141	9,700	7,760	1,940	0	0	0	



Source: Esri, Maxar, GeoEye, Earthstar Geographics, CNES/Airbus DS, USDA, USGS, AeroGRID, IGN, and the GIS User Community

Project Description:

Upgrade and expand fiber optic lines, CCTV cameras, data collection, and signal control in urban and rural areas for connection to the Traffic Control Center.

Mile Post/s:**Complete Streets (CS):**

Project will implement: Not applicable.

Existing Feature/s: Not applicable.

Project Website: None

Neighborhood(s): Island wide

Estimated Total Project Cost: \$10,577,000

Total Project Cost Notes:

(May include project costs outside of the 4-year TIP and 2 informational years.)

Project Sponsor: City and County of Honolulu

Agency Responsible for Carrying Out Project/Phase:

City Department of Transportation Services

FOR INFORMATION ONLY

Phase	FFY 2022			FFY 2023			FFY 2024			FFY 2025			FFY 2026			FFY 2027			Funding Category	
	Total (x\$1000)	Federal (x\$1000)	Local (x\$1000)	Total (x\$1000)	Federal (x\$1000)	Local (x\$1000)	Total (x\$1000)	Federal (x\$1000)	Local (x\$1000)	Total (x\$1000)	Federal (x\$1000)	Local (x\$1000)	Total (x\$1000)	Federal (x\$1000)	Local (x\$1000)	Total (x\$1000)	Federal (x\$1000)	Local (x\$1000)		
Phase 16 Waianae																				
PE1	0	0	0	468	374	94	0	0	0	0	0	0	0	0	0	0	0	0	0	STBG
PE2	0	0	0	0	0	0	336	269	67	0	0	0	0	0	0	0	0	0	0	STBG
CON	0	0	0	0	0	0	0	0	0	0	0	0	3,334	2,667	667	0	0	0	0	STBG
EQP	0	0	0	0	0	0	0	0	0	0	0	0	1	0	1	0	0	0	0	STBG
INSP	0	0	0	0	0	0	0	0	0	0	0	0	700	560	140	0	0	0	0	STBG
Phase 17 Maili																				
PE1	0	0	0	437	350	87	0	0	0	0	0	0	0	0	0	0	0	0	0	STBG
PE2	0	0	0	0	0	0	312	250	62	0	0	0	0	0	0	0	0	0	0	STBG
CON	0	0	0	0	0	0	0	0	0	0	0	0	0	0	0	3,938	3,150	788	0	STBG
EQP	0	0	0	0	0	0	0	0	0	0	0	0	0	0	0	1	0	1	0	STBG
INSP	0	0	0	0	0	0	0	0	0	0	0	0	0	0	0	1,050	840	210	0	STBG
Total	0	0	0	905	724	181	648	519	129	0	0	0	4,035	3,227	808	4,989	3,990	999	0	



Source: Esri, Maxar, GeoEye, Earthstar Geographics, CNES/Airbus DS, USDA, USGS, AeroGRID, IGN, and the GIS User Community

Project Description:

Provide traffic congestion relief and improve traffic safety at various locations, including but not limited to Mahoe/Waipahu Streets and Manager's Drive/Hiapo Street Intersection.

Mile Post/s: Not applicable

Complete Streets (CS):

Project will implement: Project will incorporate complete streets features for pedestrian use.

Existing Feature/s: No information available.

Project Website: None

Neighborhood(s): Various Locations

Estimated Total Project Cost: \$9,419,000

Total Project Cost Notes:

(May include project costs outside of the 4-year TIP and 2 informational years.)

Project Sponsor: City and County of Honolulu

Agency Responsible for Carrying Out Project/Phase:

City Department of Transportation Services

FOR INFORMATION ONLY

Phase	FFY 2022			FFY 2023			FFY 2024			FFY 2025			FFY 2026			FFY 2027			Funding Category	
	Total (x\$1000)	Federal (x\$1000)	Local (x\$1000)	Total (x\$1000)	Federal (x\$1000)	Local (x\$1000)	Total (x\$1000)	Federal (x\$1000)	Local (x\$1000)	Total (x\$1000)	Federal (x\$1000)	Local (x\$1000)	Total (x\$1000)	Federal (x\$1000)	Local (x\$1000)	Total (x\$1000)	Federal (x\$1000)	Local (x\$1000)		
Mahoe and Waipahu Streets																				
CON	0	0	0	5,000	4,000	1,000	0	0	0	0	0	0	0	0	0	0	0	0	0	STBG
INSP	0	0	0	800	640	160	0	0	0	0	0	0	0	0	0	0	0	0	0	STBG
Manager's Drive/Hiapo Street Intersection Improvements																				
PE1	300	240	60	0	0	0	0	0	0	0	0	0	0	0	0	0	0	0	0	STBG
PE2	0	0	0	0	0	0	156	125	31	0	0	0	0	0	0	0	0	0	0	STBG
CON	0	0	0	0	0	0	0	0	0	2,413	1,930	483	0	0	0	0	0	0	0	STBG
INSP	0	0	0	0	0	0	0	0	0	750	600	150	0	0	0	0	0	0	0	STBG
Total	300	240	60	5,800	4,640	1,160	156	125	31	3,163	2,530	633	0	0	0	0	0	0	0	



Source: Esri, Maxar, GeoEye, Earthstar Geographics, CNES/Airbus DS, USDA, USGS, AeroGRID, IGN, and the GIS User Community

Various Locations - Islandwide

Project Description:

The Transportation Alternatives (TA) Set-Aside is a competitive grant program that provides funding for programs and projects defined as transportation alternatives, including on- and off-road pedestrian and bicycle facilities, and infrastructure projects for improving non-driver access to public transportation and enhanced mobility, and community improvement activities. Locations to be determined by the OahuMPO TA Set-Aside Project Evaluation and Ranking process. HART projects may be flexed from FHWA to FTA.

Mile Post/s:

Complete Streets (CS):

Project will implement: The Ala Wai Bridge will be a new pedestrian and bicycle bridge crossing the Ala Wai Canal, connecting Waikiki and McCully-Moiliili neighborhoods.

Existing Feature/s: No information available.

Project Website: <https://www.oahumpo.org/plans-and-programs/transportation-alternatives-ta-set-aside/>

Neighborhood(s): McCully-Moiliili, Various Locations

Estimated Total Project Cost: \$51,100,000

Total Project Cost Notes:

(May include project costs outside of the 4-year TIP and 2 informational years.)

Project Sponsor: City and County of Honolulu

Agency Responsible for Carrying Out Project/Phase:

City Department of Transportation Services

FOR INFORMATION ONLY

Phase	FFY 2022			FFY 2023			FFY 2024			FFY 2025			FFY 2026			FFY 2027			Funding Category
	Total (x\$1000)	Federal (x\$1000)	Local (x\$1000)	Total (x\$1000)	Federal (x\$1000)	Local (x\$1000)	Total (x\$1000)	Federal (x\$1000)	Local (x\$1000)	Total (x\$1000)	Federal (x\$1000)	Local (x\$1000)	Total (x\$1000)	Federal (x\$1000)	Local (x\$1000)	Total (x\$1000)	Federal (x\$1000)	Local (x\$1000)	
Ala Wai Bridge Project																			
PE2	0	0	0	2,038	1,630	408	0	0	0	0	0	0	0	0	0	0	0	0	TA
CON	0	0	0	0	0	0	29,810	23,848	5,962	0	0	0	0	0	0	0	0	0	FHWA Grant
CON	0	0	0	0	0	0	3,341	2,673	668	0	0	0	0	0	0	0	0	0	STBG
CON	0	0	0	0	0	0	1,250	1,000	250	0	0	0	0	0	0	0	0	0	TA
INSP	0	0	0	0	0	0	5,160	4,128	1,032	0	0	0	0	0	0	0	0	0	FHWA Grant
Rail Station Multimodal Access Improvements - Halawa Station and Waiawa Station																			
CON	0	0	0	1,750	1,400	350	0	0	0	0	0	0	0	0	0	0	0	0	TA
Total	0	0	0	3,788	3,030	758	39,561	31,649	7,912	0	0	0	0	0	0	0	0	0	

OC-21-54 Kalaeloa Boulevard Railroad Improvements



Project Description:

Design and install a railroad traffic signal and traffic camera at the railroad crossing on Kalaeloa Blvd.

Mile Post/s:

Complete Streets (CS):

Project will implement: Controlled bicycle and pedestrian crossings will be installed as part of the project.

Existing Feature/s: Existing bicycle lanes will be preserved.

Project Website: None

Neighborhood(s): Makakilo-Kapolei-Honokai Hale

Estimated Total Project Cost: \$1,480,000

Total Project Cost Notes: State to fund and develop PE1 and PE2. State to fund and City to develop CON & INSP.

(May include project costs outside of the 4-year TIP and 2 informational years.)

Project Sponsor: State of Hawaii and City and County of Honolulu

Agency Responsible for Carrying Out Project/Phase:

City Department of Transportation Services

FOR INFORMATION ONLY

Phase	FFY 2022			FFY 2023			FFY 2024			FFY 2025			FFY 2026			FFY 2027			Funding Category
	Total (x\$1000)	Federal (x\$1000)	Local (x\$1000)	Total (x\$1000)	Federal (x\$1000)	Local (x\$1000)	Total (x\$1000)	Federal (x\$1000)	Local (x\$1000)	Total (x\$1000)	Federal (x\$1000)	Local (x\$1000)	Total (x\$1000)	Federal (x\$1000)	Local (x\$1000)	Total (x\$1000)	Federal (x\$1000)	Local (x\$1000)	
PE1	150	120	30	0	0	0	0	0	0	0	0	0	0	0	0	0	0	0	HSIP
PE2	0	0	0	35	30	5	0	0	0	0	0	0	0	0	0	0	0	0	HSIP
CON	0	0	0	0	0	0	1,125	1,125	0	0	0	0	0	0	0	0	0	0	HSIP
INSP	0	0	0	0	0	0	170	170	0	0	0	0	0	0	0	0	0	0	HSIP
Total	150	120	30	35	30	5	1,295	1,295	0	0	0	0	0	0	0	0	0	0	

OC-21-55 Oahu Traffic Signal Controller Modernization



Source: Esri, Maxar, GeoEye, Earthstar Geographics, CNES/Airbus DS, USDA, USGS, AeroGRID, IGN, and the GIS User Community

Project Description:

To construct and inspect related equipment for approximately 150 traffic signalized intersections

Mile Post/s:

Complete Streets (CS):

Project will implement: Not applicable.

Existing Feature/s: Existing pedestrian signal will remain in place. Operation of the pedestrian signal will remain the same.

Project Website: None

Neighborhood(s): Island wide

Estimated Total Project Cost: \$16,251,000

Total Project Cost Notes:

(May include project costs outside of the 4-year TIP and 2 informational years.)

Project Sponsor: City and County of Honolulu

Agency Responsible for Carrying Out Project/Phase:

City Department of Transportation Services

FOR INFORMATION ONLY

Phase	FFY 2022			FFY 2023			FFY 2024			FFY 2025			FFY 2026			FFY 2027			Funding Category	
	Total (x\$1000)	Federal (x\$1000)	Local (x\$1000)	Total (x\$1000)	Federal (x\$1000)	Local (x\$1000)	Total (x\$1000)	Federal (x\$1000)	Local (x\$1000)	Total (x\$1000)	Federal (x\$1000)	Local (x\$1000)	Total (x\$1000)	Federal (x\$1000)	Local (x\$1000)	Total (x\$1000)	Federal (x\$1000)	Local (x\$1000)		
CON	7,695	6,156	1,539	0	0	0	5,000	4,000	1,000	0	0	0	0	0	0	0	0	0	0	STBG
INSP	1,681	1,345	336	0	0	0	1,875	1,500	375	0	0	0	0	0	0	0	0	0	0	STBG
Total	9,376	7,501	1,875	0	0	0	6,875	5,500	1,375	0	0	0	0	0	0	0	0	0	0	

FTA: City and County of Honolulu



Source: Esri, Maxar, GeoEye, Earthstar Geographics, CNES/Airbus DS, USDA, USGS, AeroGRID, IGN, and the GIS User Community

Project Description:

To modify bus stops and bring them into compliance with the Americans with Disabilities Act (ADA), improve the mobility independence for transit users of all ages and abilities, pedestrian access, and the number of ADA accessible bus stops.

Mile Post/s: Not applicable

Complete Streets (CS):

Project will implement: ADA compliant site improvements on bus stop shelter, pavement, and landing provide pedestrians and bicycles with access to transit.

Existing Feature/s: No information available.

Project Website: None

Neighborhood(s): Various Locations

Estimated Total Project Cost: \$4,604,000

Total Project Cost Notes:

(May include project costs outside of the 4-year TIP and 2 informational years.)

Project Sponsor: City and County of Honolulu

Agency Responsible for Carrying Out Project/Phase:

City Department of Transportation Services

FOR INFORMATION ONLY

Phase	FFY 2022			FFY 2023			FFY 2024			FFY 2025			FFY 2026			FFY 2027			Funding Category
	Total (x\$1000)	Federal (x\$1000)	Local (x\$1000)	Total (x\$1000)	Federal (x\$1000)	Local (x\$1000)	Total (x\$1000)	Federal (x\$1000)	Local (x\$1000)	Total (x\$1000)	Federal (x\$1000)	Local (x\$1000)	Total (x\$1000)	Federal (x\$1000)	Local (x\$1000)	Total (x\$1000)	Federal (x\$1000)	Local (x\$1000)	
DES	365	292	73	365	292	73	365	292	73	365	292	73	365	292	73	365	292	73	\$5307/\$5340
CON	251	201	50	1,040	832	208	251	201	50	251	201	50	251	201	50	251	201	50	\$5307/\$5340
CON	119	119	0	0	0	0	0	0	0	0	0	0	0	0	0	0	0	0	\$5310
Total	735	612	123	1,405	1,124	281	616	493	123	616	493	123	616	493	123	616	493	123	



Project Description:

Preventive maintenance of FTA-funded rolling stock (buses and Handi-Vans) includes parts, labor, and other related expenses.

Mile Post/s:

Complete Streets (CS):

Project will implement: Not applicable.

Existing Feature/s: Not applicable.

Project Website: None

Neighborhood(s): Various Locations

Estimated Total Project Cost: \$105,000,000

Total Project Cost Notes:

(May include project costs outside of the 4-year TIP and 2 informational years.)

Project Sponsor: City and County of Honolulu

Agency Responsible for Carrying Out Project/Phase:

City Department of Transportation Services

FOR INFORMATION ONLY

Phase	FFY 2022			FFY 2023			FFY 2024			FFY 2025			FFY 2026			FFY 2027			Funding Category
	Total (x\$1000)	Federal (x\$1000)	Local (x\$1000)	Total (x\$1000)	Federal (x\$1000)	Local (x\$1000)	Total (x\$1000)	Federal (x\$1000)	Local (x\$1000)	Total (x\$1000)	Federal (x\$1000)	Local (x\$1000)	Total (x\$1000)	Federal (x\$1000)	Local (x\$1000)	Total (x\$1000)	Federal (x\$1000)	Local (x\$1000)	
OPR	0	0	0	0	0	0	26,250	21,000	5,250	26,250	21,000	5,250	26,250	21,000	5,250	26,250	21,000	5,250	\$5307/\$5340
Total	0	0	0	0	0	0	26,250	21,000	5,250	26,250	21,000	5,250	26,250	21,000	5,250	26,250	21,000	5,250	



Project Description:

Capital improvement projects at various locations will provide safety and security aboard transit vehicles and at future and existing bus stops and transit centers, park-and-ride lots, and bus maintenance facilities.

Mile Post/s: Not applicable

Complete Streets (CS):

Project will implement: Not applicable.

Existing Feature/s: Not applicable.

Project Website: None

Neighborhood(s): Various Locations

Estimated Total Project Cost: \$6,905,000

Total Project Cost Notes:

(May include project costs outside of the 4-year TIP and 2 informational years.)

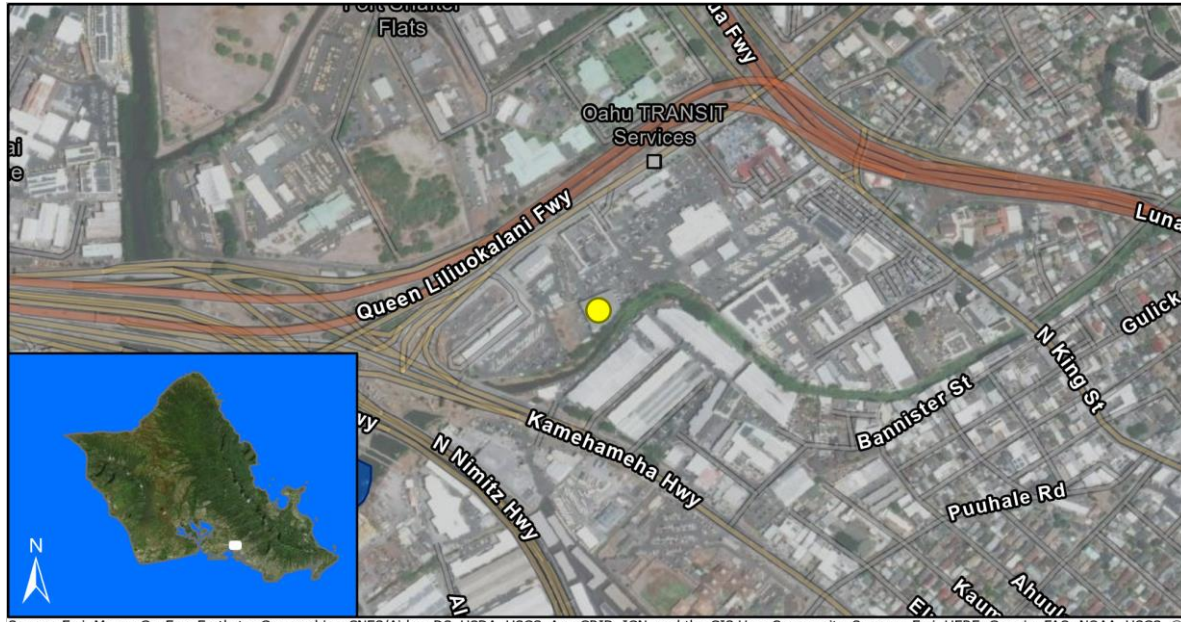
Project Sponsor: City and County of Honolulu

Agency Responsible for Carrying Out Project/Phase:

City Department of Transportation Services

FOR INFORMATION ONLY

Phase	FFY 2022			FFY 2023			FFY 2024			FFY 2025			FFY 2026			FFY 2027			Funding Category
	Total (x\$1000)	Federal (x\$1000)	Local (x\$1000)	Total (x\$1000)	Federal (x\$1000)	Local (x\$1000)	Total (x\$1000)	Federal (x\$1000)	Local (x\$1000)	Total (x\$1000)	Federal (x\$1000)	Local (x\$1000)	Total (x\$1000)	Federal (x\$1000)	Local (x\$1000)	Total (x\$1000)	Federal (x\$1000)	Local (x\$1000)	
PLN	0	0	0	1	0	1	1	0	1	1	0	1	1	0	1	1	0	1	Local
DES	0	0	0	91	73	18	91	73	18	91	73	18	91	73	18	91	73	18	§5307/§5340
CON	2	1	1	691	291	400	2	1	1	2	1	1	2	1	1	2	1	1	§5307/§5340
CON	0	0	0	3,125	2,500	625	0	0	0	0	0	0	0	0	0	0	0	0	§5307/§5340
EQP	804	644	160	363	290	73	363	290	73	363	290	73	363	290	73	363	290	73	§5307/§5340
Total	806	645	161	4,271	3,154	1,117	457	364	93	457	364	93	457	364	93	457	364	93	



Source: Esri, Maxar, GeoEye, Earthstar Geographics, CNES/Airbus DS, USDA, USGS, AeroGRID, IGN, and the GIS User Community, Sources: Esri, HERE, Garmin, FAO, NOAA, USGS, © OpenStreetMap contributors, and the GIS User Community

Project Description:

Acquire property located at the Middle Street Transit Center, plan, and design the entire transit campus.

Mile Post/s:

Complete Streets (CS):

Project will implement: Not applicable.

Existing Feature/s: Not applicable.

Project Website: None

Neighborhood(s): Kalihi-Palama

Estimated Total Project Cost: \$42,000,000

Total Project Cost Notes: All phases are locally funded, but are re-paying a federal det.

(May include project costs outside of the 4-year TIP and 2 informational years.)

Project Sponsor: City and County of Honolulu

Agency Responsible for Carrying Out Project/Phase:

City Department of Transportation Services

FOR INFORMATION ONLY

Phase	FFY 2022			FFY 2023			FFY 2024			FFY 2025			FFY 2026			FFY 2027			Funding Category
	Total (x\$1000)	Federal (x\$1000)	Local (x\$1000)	Total (x\$1000)	Federal (x\$1000)	Local (x\$1000)	Total (x\$1000)	Federal (x\$1000)	Local (x\$1000)	Total (x\$1000)	Federal (x\$1000)	Local (x\$1000)	Total (x\$1000)	Federal (x\$1000)	Local (x\$1000)	Total (x\$1000)	Federal (x\$1000)	Local (x\$1000)	
PLN	0	0	0	1,056	845	211	0	0	0	0	0	0	0	0	0	0	0	0	\$5307/\$5340
PLN	0	0	0	-845	-845	0	0	0	0	0	0	0	0	0	0	0	0	0	\$5307/\$5340
DES	0	0	0	0	0	0	3,644	2,915	729	0	0	0	0	0	0	0	0	0	\$5307/\$5340
DES	0	0	0	0	0	0	-2,915	-2,915	0	0	0	0	0	0	0	0	0	0	\$5307/\$5340
CON	0	0	0	0	0	0	0	0	0	0	0	0	-12,937	-12,937	0	0	0	0	\$5307/\$5340
INSP	0	0	0	0	0	0	0	0	0	-423	-423	0	0	0	0	0	0	0	\$5307/\$5340
<i>Prior Transit Investment</i>																			
CON	0	0	0	0	0	0	0	0	0	0	0	0	16,171	12,937	3,234	0	0	0	\$5307/\$5340
INSP	0	0	0	0	0	0	0	0	0	529	423	106	0	0	0	0	0	0	\$5307/\$5340
Total	0	0	0	211	0	211	729	0	729	106	0	106	3,234	0	3,234	0	0	0	