

TRANSPORTATION IMPROVEMENT PROGRAM

FEDERAL FISCAL YEARS 2022 – 2025

REVISION #4

REVISED PROJECTS



Oahu MPO

**PRE-APPROVED
ADMINISTRATIVE
MODIFICATIONS**

TRANSPORTATION IMPROVEMENT PROGRAM

FEDERAL FISCAL YEARS 2022 - 2025

REVISION #4 -PRE-APPROVED ADMINISTRATIVE MODIFICATIONS

LIST OF REVISED PROJECTS

May 2022



Oahu Metropolitan Planning Organization
707 Richards Street, Suite 200
Honolulu, Hawaii 96813-4623 (808) 587-2015 // www.oahumpo.org

This report was funded in part through grants from the Federal Highway Administration and Federal Transit Administration, U.S. Department of Transportation. The views and opinions of the agency expressed herein do not necessarily state or reflect those of the U.S. Department of Transportation.

The City and County of Honolulu is using the OahuMPO TIP public involvement process, as outlined in the Federal Highway Administration/Federal Transit Administration metropolitan transportation planning regulations (23 CFR 450/49 CFR 613), to satisfy the public hearing requirements for the Federal Transit Administration's Urbanized Area Formula Program (49 U.S.C. Section 5307) program-of-projects.

Contents

- 1 ABBREVIATIONS5
 - 1.1 OVERALL INITIALISMS AND ACRONYMS5
 - 1.2 PROJECT LISTING ABBREVIATIONS6
- 2 REVISIONS.....7
- 3 PROJECTS MODIFIED IN THIS REVISION10
- 4 PROJECT INFORMATION SHEETS.....14
 - FHWA-Funded Oahu State Projects 14
 - FHWA-Funded Oahu City Projects 30
 - FTA-Funded Oahu City Projects 36

1 ABBREVIATIONS

1.1 OVERALL INITIALISMS AND ACRONYMS

3-C	Continuing, Cooperative, Comprehensive	MAP-21	Moving Ahead for Progress in the 21 st Century [P.L. 112-141, 2012]
ADA	Americans with Disabilities Act	MOA	Memorandum of Agreement
APE	Area of Potential Effects	NEPA	National Environmental Policy Act NHPA
CAC	OahuMPO Citizen Advisory Committee	NHPA	National Historic Preservation Act
CATEX	Categorical Exclusion	NTD	National Transit Database
CFR	Code of Federal Regulations	OahuMPO	Oahu Metropolitan Planning Organization
CCTV	Closed-circuit television	ORTP	OahuMPO Oahu Regional Transportation Plan
CMP	OahuMPO Congestion Management Process	OWP	OahuMPO Overall Work Plan
DTS	City and County of Honolulu Department of Transportation Services	PB	OahuMPO Policy Board (formerly Committee)
EJ	Environmental Justice	SAFETEA-LU	Safe, Accountable, Flexible, Efficient Transportation Equity Act – A Legacy for Users [P.L. 109-59, 2005]
FAST	Fixing America's Surface Transportation Act [P.L. 114-96, 2015]	SMP	Special Maintenance Program
FMCSA	USDOT Federal Motor Carrier Safety Administration	SOG	State of Good Repair
FHWA	USDOT Federal Highway Administration	STIC	Small Transit Intensive Cities
FTA	USDOT Federal Transit Administration	STIP	Statewide Transportation Improvement Program
FFY	Federal Fiscal Year (October 1- September 30)	TA	Transportation Alternatives
HART	Honolulu Authority for Rapid Transportation	TAC	OahuMPO Technical Advisory Committee
HDOT	Hawaii Department of Transportation	TIP	Transportation Improvement Program
HR	House Report	T6	Title VI of the Civil Rights Act of 1964
ITS	OahuMPO Intelligent Transportation System	U.S.C.	United States Code
		UZA	Urbanized Areas

1.2 PROJECT LISTING ABBREVIATIONS

FHWA Funding Categories

OS Bridge	Off-System Bridges
CMAQ	Congestion Mitigation and Air Quality Program
ER	Emergency Relief Program
FLAP	Federal Lands Access Program
NHPP	National Highway Performance Program
HSIP	Highway Safety Improvement Program
RHCP	Rail-Highway Crossings Program (§130)
SRTS	Safe Routes to School
STBG	Surface Transportation Block Grant Program
TA	Transportation Alternatives Set-Aside
TA-U	Transportation Alternatives Set Aside for Urbanized Areas
RTP	Recreational Trails Program

FTA Funding Categories

§5307/5340	Urbanized Area Formula/ Growing States and High-Density States Formula
§5309	New Starts
§5310	Enhanced Mobility
§5329	Public Transit Safety Program
§5337	State of Good Repair
§5339	Bus and Bus Facilities
§5340	Growing States and High-Density States Formula

Local Funding Category

Local Only	Locally Funded
------------	----------------

Project Phases (Chronological Order)

PLN	Planning
PE1	Preliminary Design including NEPA
DES	Design
PE2	Final Design
EQP	Equipment
PREROW	Pre-right-of-Way
ROW	Right-of-Way
ADVCON	Advance Construction Reimbursement
REL	Utility Relocation
CON	Construction
OPR	Operations
INSP	Inspection

2 REVISIONS

The TIP covers a period of no more than four years, and a new TIP will be adopted every three years. The TIP is frequently revised to reflect changes in project delivery schedules, changes in cost estimates and/or in scope, and changes in management systems and administrative priorities. These revisions are required to assure the efficient use of the annually apportioned federal funds. The following administrative provisions have been established to promote timely implementation and oversight of the TIP. A revision refers to a change to the TIP that occurs between the triennial updates. A minor revision is an “administrative modification,” while a major revision is an “amendment.”

Pre-Approved Administrative Modifications:

Pre-approved administrative modifications are minor revisions that are considered pre-approved and can be immediately processed without prior review by the OahuMPO Committees and Policy Board. No solicitation of public comment or redemonstration of financial constraint is required (23CFR450.104). However, it is assumed that financial constraint shall be re-established through the next TIP amendment process the following must be true:

- The administrative modifications must not affect the financial constraint of the TIP;
- The administrative modifications must not result in the addition of another project (excluding the addition of projects to grouped listings/programs with dedicated funding (such as Transportation Alternative Program (TAP), Safe Routes to School (SRTS), Special Maintenance Program (SMP) if the funding amounts stay within

certain guidelines (see TIP Policies and Procedures for details)

- The administrative modifications must not result in the deletion of project, including the deferral of a project to a year that is outside of the four-year TIP; and
- The affected project’s implementing agency must concur with the actions.

Expedited Administrative Modifications:

Requests for expedited approval of administrative modifications are submitted directly to the Policy Board without prior review by the Technical Advisory Committee or solicitation of public comment.

Amendments:

Amendments are revisions to the TIP that involve major changes to the TIP. TIP amendments are submitted to the Technical Advisory Committee, the Policy Board, and the Governor’s designee for action. Financial constraint is re-demonstrated and consistent with 23CFR450.220, the technical analyses are rerun, including the T6/EJ analysis, and the performance measure and CMP impacts are reassessed. Public comments are also solicited based on the procedures outlined in the OahuMPO Public Participation Plan, and the public comment period begins once the Amendment is posted on the OahuMPO website. Comments and the responses must be documented within the TIP Amendment document. The TIP may be revised at any time, if time permits. There will be two planned major revisions (Amendments) to the TIP in each federal fiscal year (October 1 to September 30). Table 1 below identifies the milestones in the semi-annual TIP revisions. Time frames below are subject to change.

Table 1 TIP Revision Milestones and Schedule

TIP REVISION	First Revision (fall/winter)	Second (last) Revision (spring/summer)
Step 1: IDENTIFY REVISIONS Notify implementing agencies that the TIP revision process is underway so that they may begin to prepare their list of changes to TIP projects.		
Early coordination: Send DTS and HART official email reminding that the TIP revision requests are due in 3 months	Early August	Early January
HDOT schedules Over-the-Shoulder-Reviews (OSRs) with HDOT, DTS, HART, and the OahuMPO to attend and obtain/share project status	Oct-Nov	March-April
TIP revision requests due to OahuMPO, along with PIJS [Project Information and Justification Sheet] or PPR [Planning Programming Request] if applicable	Mid November	Early-Mid April
Step 2: DRAFT TIP REVISION(S) Create draft TIP revision(s)		
OahuMPO develops and finalizes draft TIP revision(s); and works with HDOT, DTS, and HART to confirm accuracy & consistency with the current ORTP	Early December	Late April-Early May
HDOT, DTS, and HART review draft TIP revision(s)	Mid December	Late April-Early May
OahuMPO reruns analyses, and prepares a fiscally constrained draft revision document for distribution	Late December	Mid-Late May
Step 3: IGR AND PUBLIC COMMENTS Usually at least a two-week comment period is provided		
Revisions posted to OahuMPO website and public and agency comment period begins	Early-Mid January	Early-Mid June

TIP REVISION	First Revision (fall/winter)	Second (last) Revision (spring/summer)
Processing of public comments and preparation of presentations for OahuMPO Committees and Policy Board	Mid-Late January	Mid-Late June
Step 4: PRESENTATION TO OMPO COMMITTEES TIP Revisions are presented to the TAC for review and to the PB for approval.		
Technical Advisory Committee consideration	February	July
Policy Board (PB) action	Late Feb-Mid Mar	July
OahuMPO sends letter to Governor's Designee for approval of the TIP Amendment	Early-Mid March	Late July/ Early August
OahuMPO sends letter to HDOT requesting to incorporate TIP revision(s) into the STIP	Mid March	Early August
Step 5: FINALIZE Approval of Amendment and creation of a final "As-Of" TIP document including all the modifications and amendment		
TIP/STIP Amendment jointly approved by FHWA and FTA (anticipated)	Early-Mid Mar	Early-Mid Aug
OahuMPO website updated to show date of revision approval and final revision document	Mid March	Mid August
A full "As of revision #X" TIP document is created and uploaded to the OahuMPO website	Mid-Late March	Mid-Late August

3 PROJECTS MODIFIED IN THIS REVISION

This revision consists of Pre-Approved Administrative Modifications and is thus submitted directly to the Policy Board without prior review by the Technical Advisory Committee or solicitation of public comment.

FHWA FUNDED PROJECTS:

STATE OF HAWAII

PROJECT NUMBER	PROJECT NAME (ALPHABETICAL ORDER)	REVISION DETAILS	PAGE
OS76	Bridge Rehabilitation Program, Various Locations	Request to remove funds from FFY 2025 and reprograms those funds to the new OS-22-61 project (A.10) and reduce total estimated project cost from \$53.5 million to \$38.5 million (A.11).	15
OS77	Bridge Replacement Program, Various Locations	Request to remove funds from FFY 2025 and reprograms those funds to projects OS29 and OS31 (A.10) and reduce total estimated project cost from \$36.4 million to \$26.4 million (A.11).	16
OS5	Freeway Management System, Interstate H-1, H-2, H-3, and Moanalua Freeway (Route H-201 & 78) - Phase 5	Request to defer PE2, CON, ADVCON funds by one year and inflate (A.2, A.7, A.11) due to anticipated Section 106 delays.	17-18
OS82	Interstate Route H-1 Improvements, Eastbound, Ola Lane Overpass to Vineyard Boulevard	Request to increase CON funds in FFY 2022 (A.11) due, in part, to supply chain related inflation; no change in federal amount.	19
OS82	Interstate Route H-1 Improvements, Eastbound, Ola Lane Overpass to Vineyard Boulevard	Request to add an additional year of AC conversion due to cost increase (A.11).	19
OS82	Interstate Route H-1 Improvements, Eastbound, Ola Lane Overpass to Vineyard Boulevard	Request to increase estimated total project costs from \$65 million to \$75 million (A.11).	19
OS74	Interstate Route H-1, Seismic Retrofit, McCully Street Separation	Request to defer PE1, PE2 funds by one year and inflate (A.2, A.11).	20

OS74	Interstate Route H-1, Seismic Retrofit, McCully Street Separation	Request to defer CON funds to outside the 4-year TIP and inflate (A.7, A.11).	20
OS74	Interstate Route H-1, Seismic Retrofit, McCully Street Separation	Request to increase total estimated project cost from \$3.155 million to \$3.5 million (A.11).	20
OS-21-50	Interstate Route H-3, Halawa Valley Mitigation, Phase 3, Gate 3 to Native Species Area	Request to defer CON funds by one year and inflate (A.2, A.11) since the scope of work has yet to be determined and is contingent on preservation plan by OHA.	21
OS-22-59	Interstate Route H-3, Unit 7C	Request to increase CON funds in FFY22 and increase estimated total project cost from \$3 million to \$4.4 million - scope has been better refined (A.11).	22
OS29	Kamehameha Highway (Route 83), Bridge Replacement, Kaluanui Stream Bridge	Request to defer CON funds by one year and inflate to re-design for steel to account for sea level rise (A.2, A.11).	23
OS29	Kamehameha Highway (Route 83), Bridge Replacement, Kaluanui Stream Bridge	Request to defer all ADVCON funds by one year (A.2).	23
OS31	Kamehameha Highway (Route 83), Bridge Replacement, Laieloa Stream Bridge	Request to defer CON funds by one year and inflate (A.2, A.11) due to utility agreement issues.	24
OS31	Kamehameha Highway (Route 83), Bridge Replacement, Laieloa Stream Bridge	Request to defer all ADVCON funds by one year due to CON being deferred by one year (A.2).	24
OS84	Kamehameha Highway (Route 83) Intersection Improvements at Kahekili Highway	Request to increase CON funds to reflect latest estimates (A.11).	25
OS84	Kamehameha Highway (Route 83) Intersection Improvements at Kahekili Highway	Request to increase estimated total project costs from \$5.5 million to \$6.4 million (A.11).	25
OS-21-43	Kamehameha Highway (Route 99) Seismic Retrofit, Pearl Harbor Interchange, Structure #2	Request to defer (and inflate) PE1 by one year (A.2, A.11).	26
OS-21-43	Kamehameha Highway (Route 99) Seismic Retrofit, Pearl Harbor Interchange, Structure #2	Request to defer (and inflate) PE2 and CON by one year - project development has been delayed (A.2, A.11).	26

OS-21-45	Pali Highway Rockfall Mitigation, Vicinity of MP 5.9 to MP 6.10	Request to defer (and inflate) PE1 by one year due to reprioritization (A.2, A.11).	27
OS-21-44	Pali Highway Rockfall Mitigation, Vicinity of MP 6.10 to MP 6.55	Request to defer (and inflate) PE1 by one year due to reprioritization (A.2, A.11).	28
OS63	Traffic Counting Stations, Various Locations	Request to defer (and inflate) CON by one year due to ongoing environmental clearance (A.2, A.11).	29
OS63	Traffic Counting Stations, Various Locations	Request to defer ADVCON by one year due to CON being deferred (A.2).	29

CITY AND COUNTY OF HONOLULU

PROJECT NUMBER	PROJECT NAME (ALPHABETICAL ORDER)	REVISION DETAILS	PAGE
OC2	Bikeway Improvements Program - Kailua-Lanikai Bike Path	Request to defer (and inflate) all funds by one year due to delays caused by erosion issues and adjust for inflation (A.2, A.11).	31
OC2	Bikeway Improvements Program - Waipahu Depot Shared Use Path	Request to defer and (and inflate) PE2 funds by one year (A.2, A.11), and CON and INSP funds by two years to outside the 4-year TIP (A.7, A.11).	31
OC2	Bikeway Improvements Program	Request to increase total estimated project cost from \$3.301 million to \$3.393 million (A.11).	31
OC10	Traffic Signals at Various Locations	Request to add a new phase/project to the program: Phase 16 - Kapiolani Blvd/Kaimuki Ave, Salt Lake Blvd/Radford Dr, Nehoa St/Mott-Smith Dr, Ala Ilima St/Ala Liliko'i St, and Ulune St/Service Rd. (A.5).	32-33
OC10	Traffic Signals at Various Locations	Request to increase total estimated project cost from \$17.018 million to \$19.849 million (A.11).	32-33
OC10	Traffic Signals at Various Locations - Phase 18	Request to defer (and inflate) CON, INSP, EQP funds by one year (A.2, A.11).	32-33
OC25	Transportation Alternatives Program (MPO) - Ala Wai Bridge Project	Request to defer (and inflate) PE2 funds by one year due to section 106 delays (A.2) and increase INSP funds to reflect changes in cost estimates (A.11).	34-35

FTA FUNDED PROJECTS:

CITY AND COUNTY OF HONOLULU

PROJECT NUMBER	PROJECT NAME (ALPHABETICAL ORDER)	REVISION DETAILS	PAGE
OC14	Bus Stop ADA Access and Site Improvements	Request to add CON funds in FFY 2022 from ARP and CRRSAA (A.10).	37
OC20	Preventive Maintenance	Request to decrease total estimated project cost from \$157.5 million to \$131.25 million (A.11).	38
OC20	Preventive Maintenance	Request to remove OPR funds in FFY2022 due to revising source of federal funds to CRRSAA (A.11).	38

NUMBER OF PROJECTS BEING REVISED IN REVISION # 4:	PERCENTAGE OF TOTAL TIP PROJECTS REVISED IN REVISION # 4:
19	$(19/79) * 100 = 24 \%$

4 PROJECT INFORMATION SHEETS

FHWA-Funded Projects

O'ahu State (OS) Projects



Source: Esri, Maxar, GeoEye, Earthstar Geographics, CNES/Airbus DS, USDA, USGS, AeroGRID, IGN, and the GIS User Community

Project Description:

This program will fund projects generated from the priorities identified in the Bridge Management System (BRM).

Mile Post/s: Not applicable

Complete Streets (CS):

Project will implement: No information available. However, CS principles will be considered in all Highway Projects.

Existing Feature/s: No information available.

Project Website: None

Neighborhood(s): Various Locations

Estimated Total Project Cost: \$38,500,000 over 6 years
(May include project costs outside of the 4-year TIP and 2 informational years.)

Project Sponsor: State of Hawaii (FHWA Funded)

Agency Responsible for Carrying Out Project/Phase:
Hawaii Department of Transportation

FOR INFORMATION ONLY

Phase	FFY 2022			FFY 2023			FFY 2024			FFY 2025			FFY 2026			FFY 2027			Funding Category
	Total (x\$1000)	Federal (x\$1000)	Local (x\$1000)	Total (x\$1000)	Federal (x\$1000)	Local (x\$1000)	Total (x\$1000)	Federal (x\$1000)	Local (x\$1000)	Total (x\$1000)	Federal (x\$1000)	Local (x\$1000)	Total (x\$1000)	Federal (x\$1000)	Local (x\$1000)	Total (x\$1000)	Federal (x\$1000)	Local (x\$1000)	
Various Locations TBD by BRM																			
PE1	0	0	0	500	0	500	500	0	500	500	0	500	500	0	500	500	0	500	NHPP
PE2	0	0	0	0	0	0	1,000	800	200	1,000	800	200	1,000	800	200	1,000	800	200	NHPP
ROW	0	0	0	0	0	0	500	0	500	500	0	500	500	0	500	500	0	500	NHPP
CON	0	0	0	0	0	0	0	0	0	0	0	0	15,000	12,000	3,000	15,000	12,000	3,000	NHPP
Total	0	0	0	500	0	500	2,000	800	1,200	2,000	800	1,200	17,000	12,800	4,200	17,000	12,800	4,200	



Source: Esri, Maxar, GeoEye, Earthstar Geographics, CNES/Airbus DS, USDA, USGS, AeroGRID, IGN, and the GIS User Community

Project Description:

This program will fund projects based on priorities generated from the Bridge Management System (BRM).

Mile Post/s: Not applicable

Complete Streets (CS):

Project will implement: No information available. However, CS principles will be considered in all Highway Projects.

Existing Feature/s: No information available.

Project Website: None

Neighborhood(s): Various Locations

Estimated Total Project Cost: \$26,400,000 over 6 years

(May include project costs outside of the 4-year TIP and 2 informational years.)

Project Sponsor: State of Hawaii (FHWA Funded)

Agency Responsible for Carrying Out Project/Phase:
Hawaii Department of Transportation

FOR INFORMATION ONLY

Phase	FFY 2022			FFY 2023			FFY 2024			FFY 2025			FFY 2026			FFY 2027			Funding Category
	Total (x\$1000)	Federal (x\$1000)	Local (x\$1000)	Total (x\$1000)	Federal (x\$1000)	Local (x\$1000)	Total (x\$1000)	Federal (x\$1000)	Local (x\$1000)	Total (x\$1000)	Federal (x\$1000)	Local (x\$1000)	Total (x\$1000)	Federal (x\$1000)	Local (x\$1000)	Total (x\$1000)	Federal (x\$1000)	Local (x\$1000)	
Various Locations TBD by BRM																			
PE1	0	0	0	400	0	400	400	0	400	400	0	400	400	0	400	400	0	400	NHPP
PE2	0	0	0	0	0	0	600	480	120	600	480	120	600	480	120	600	480	120	NHPP
ROW	0	0	0	0	0	0	500	0	500	500	0	500	500	0	500	500	0	500	NHPP
CON	0	0	0	0	0	0	0	0	0	0	0	0	10,000	8,000	2,000	10,000	8,000	2,000	NHPP
Total	0	0	0	400	0	400	1,500	480	1,020	1,500	480	1,020	11,500	8,480	3,020	11,500	8,480	3,020	

FOR INFORMATION ONLY

Phase	FFY 2022			FFY 2023			FFY 2024			FFY 2025			FFY 2026			FFY 2027			Funding Category
	Total (x\$1000)	Federal (x\$1000)	Local (x\$1000)	Total (x\$1000)	Federal (x\$1000)	Local (x\$1000)	Total (x\$1000)	Federal (x\$1000)	Local (x\$1000)	Total (x\$1000)	Federal (x\$1000)	Local (x\$1000)	Total (x\$1000)	Federal (x\$1000)	Local (x\$1000)	Total (x\$1000)	Federal (x\$1000)	Local (x\$1000)	
<i>Phase 3A</i>																			
ADVCON	0	0	0	0	1,000	-1,000	0	0	0	0	0	0	0	0	0	0	0	0	NHPP
<i>Phase 4</i>																			
PE2	0	0	0	600	540	60	0	0	0	0	0	0	0	0	0	0	0	0	NHPP
CON	0	0	0	0	0	0	10,000	3,000	7,000	0	0	0	0	0	0	0	0	0	NHPP
ADVCON	0	0	0	0	0	0	0	0	0	0	5,000	-5,000	0	0	0	0	0	0	NHPP
<i>Phase 5</i>																			
PE1	800	720	80	0	0	0	0	0	0	0	0	0	0	0	0	0	0	0	NHPP
PE2	0	0	0	0	0	0	612	551	61	0	0	0	0	0	0	0	0	0	NHPP
CON	0	0	0	0	0	0	0	0	0	10,200	3,060	7,140	0	0	0	0	0	0	NHPP
ADVCON	0	0	0	0	0	0	0	0	0	0	0	0	0	5,000	-5,000	0	0	0	NHPP
Total	3,300	4,158	-858	600	4,540	-3,940	10,612	3,551	7,061	10,200	8,060	2,140	0	5,000	-5,000	0	0	0	

OS82 Interstate Route H-1 Improvements, Eastbound, Ola Lane Overpass to Vineyard Boulevard



Source: Esri, Maxar, GeoEye, Earthstar Geographics, CNES/Airbus DS, USDA, USGS, AeroGRID, IGN, and the GIS User Community, Sources: Esri, HERE, Garmin, FAO, NOAA, USGS, © OpenStreetMap contributors, and the GIS User Community

Project Description:

Eastbound Operational/congestion improvements, and structural improvements to bridges within the limits.

Mile Post/s: 18.97 - 20.25

Complete Streets (CS):

Project will implement: NA

Existing Feature/s: No information available.

Project Website: None

Neighborhood(s): Kalihi-Palama

Estimated Total Project Cost: \$75,000,000

(May include project costs outside of the 4-year TIP and 2 informational years.)

Project Sponsor: State of Hawaii (FHWA Funded)

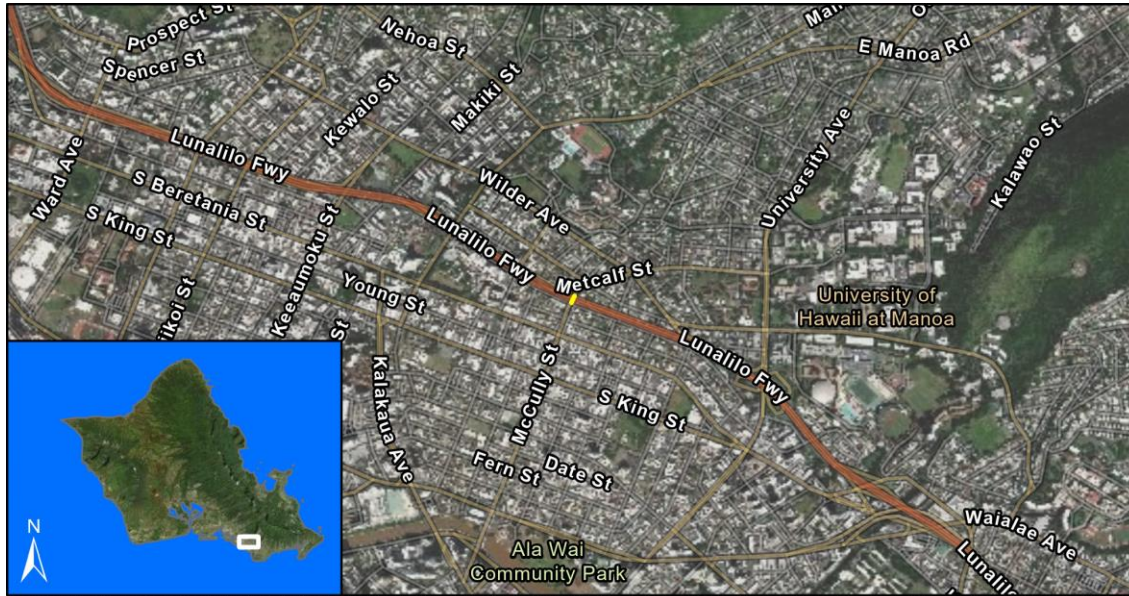
Agency Responsible for Carrying Out Project/Phase:

Hawaii Department of Transportation

FOR INFORMATION ONLY

Phase	FFY 2022			FFY 2023			FFY 2024			FFY 2025			FFY 2026			FFY 2027			Funding Category
	Total (x\$1000)	Federal (x\$1000)	Local (x\$1000)	Total (x\$1000)	Federal (x\$1000)	Local (x\$1000)	Total (x\$1000)	Federal (x\$1000)	Local (x\$1000)	Total (x\$1000)	Federal (x\$1000)	Local (x\$1000)	Total (x\$1000)	Federal (x\$1000)	Local (x\$1000)	Total (x\$1000)	Federal (x\$1000)	Local (x\$1000)	
CON	65,000	9,000	56,000	0	0	0	0	0	0	0	0	0	0	0	0	0	0	0	NHPP
ADVCON	0	0	0	0	15,000	-15,000	0	20,000	-20,000	0	8,000	-8,000	0	0	0	0	0	0	NHPP
Total	65,000	9,000	56,000	0	15,000	-15,000	0	20,000	-20,000	0	8,000	-8,000	0	0	0	0	0	0	

OS74 Interstate Route H-1, Seismic Retrofit, McCully Street Separation



Source: Esri, Maxar, GeoEye, Earthstar Geographics, CNES/Airbus DS, USDA, USGS, AeroGRID, IGN, and the GIS User Community, Sources: Esri, HERE, Garmin, FAO, NOAA, USGS, © OpenStreetMap contributors, and the GIS User Community

Project Description:

Retrofit interchange structures to meet current seismic standards.

Mile Post/s: MP 23.50

Complete Streets (CS):

Project will implement: Not applicable

Existing Feature/s: No information available.

Project Website: None

Neighborhood(s): McCully-Moiliili

Estimated Total Project Cost: \$3,500,000

(May include project costs outside of the 4-year TIP and 2 informational years.)

Project Sponsor: State of Hawaii (FHWA Funded)

Agency Responsible for Carrying Out Project/Phase:

Hawaii Department of Transportation

FOR INFORMATION ONLY

Phase	FFY 2022			FFY 2023			FFY 2024			FFY 2025			FFY 2026			FFY 2027			Funding Category
	Total (x\$1000)	Federal (x\$1000)	Local (x\$1000)	Total (x\$1000)	Federal (x\$1000)	Local (x\$1000)	Total (x\$1000)	Federal (x\$1000)	Local (x\$1000)	Total (x\$1000)	Federal (x\$1000)	Local (x\$1000)	Total (x\$1000)	Federal (x\$1000)	Local (x\$1000)	Total (x\$1000)	Federal (x\$1000)	Local (x\$1000)	
PE1	0	0	0	435	348	87	0	0	0	0	0	0	0	0	0	0	0	0	NHPP
PE2	0	0	0	0	0	0	440	352	88	0	0	0	0	0	0	0	0	0	NHPP
CON	0	0	0	0	0	0	0	0	0	0	0	0	2,550	2,040	510	0	0	0	NHPP
Total	0	0	0	435	348	87	440	352	88	0	0	0	2,550	2,040	510	0	0	0	

SITES TO BE DETERMINED

Project Description:

Provide mitigation to help restore Halawa Valley to pre H-3 conditions as much as reasonably possible.

Mile Post/s:

Complete Streets (CS):

Project will implement: Not applicable

Existing Feature/s: Not applicable

Project Website: None

Neighborhood(s): Aiea

Estimated Total Project Cost: \$5,500,000

(May include project costs outside of the 4-year TIP and 2 informational years.)

Project Sponsor: State of Hawaii (FHWA Funded)

Agency Responsible for Carrying Out Project/Phase:
Hawaii Department of Transportation

FOR INFORMATION ONLY

[illegible]

Project Description:
Complete H-3 Unit 7C. Improve access road from Halawa Valley Road to Gate 1 (next to Hawaiian Cement). The scope of work include the relocation of Halawa Access Road in the vicinity of the Mauka section of the Halawa Quarry Viaduct; the relocation of a HECO guy wire stub pole; and the placement of riprap revetment in the vicinity of pier 26 of the Halawa Quarry Viaduct. This work periferal to the ultimate completion of the H-3 Freeway.

Mile Post/s:

Complete Streets (CS):

Project will implement: No Information Available

Existing Feature/s: No Information Available

Project Website:

Neighborhood(s): Aiea

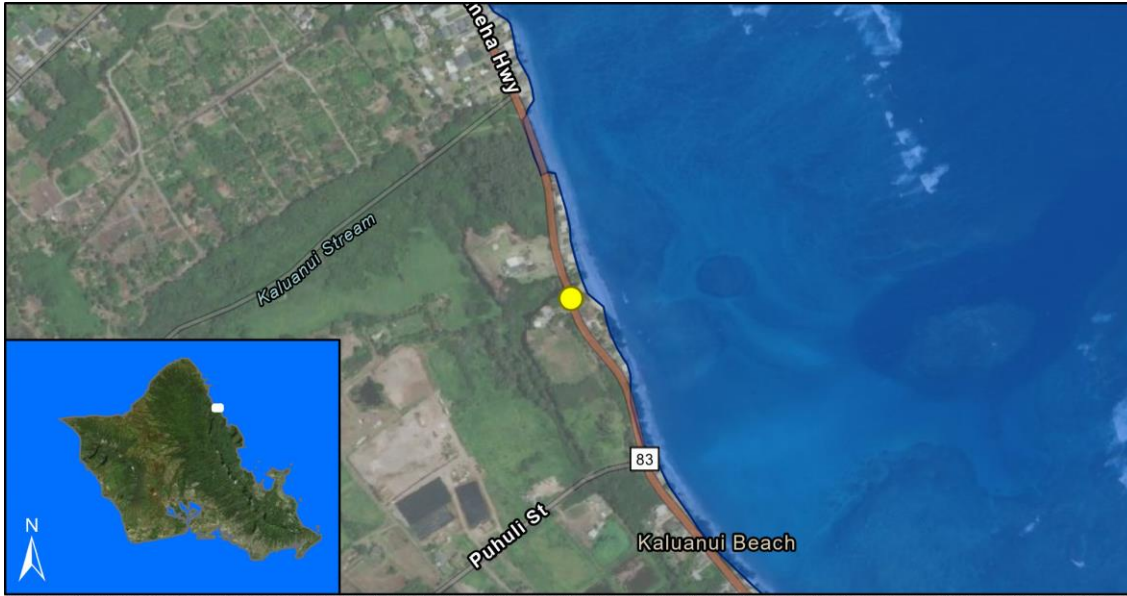
Estimated Total Project Cost: \$4,400,000
(May include project costs outside of the 4-year TIP and 2 informational years.)

Project Sponsor: State of Hawaii (FHWA Funded)

Agency Responsible for Carrying Out Project/Phase:
Hawaii Department of Transportation

[illegible]

OS29 Kamehameha Highway (Route 83), Bridge Replacement, Kaluanui Stream Bridge



Source: Esri, Maxar, GeoEye, Earthstar Geographics, CNES/Airbus DS, USDA, USGS, AeroGRID, IGN, and the GIS User Community, Sources: Esri, HERE, Garmin, FAO, NOAA, USGS, © OpenStreetMap contributors, and the GIS User Community

Project Description:

Replace the existing bridge on Kamehameha Highway.

Mile Post/s: Kamehameha Highway: MP 22.50 to 22.70

Complete Streets (CS):

Project will implement: No information available. However, CS principles will be considered in all Highway Projects.

Existing Feature/s: No information available.

Project Website: None

Neighborhood(s): Koolauloa

Estimated Total Project Cost: \$20,000,000

(May include project costs outside of the 4-year TIP and 2 informational years.)

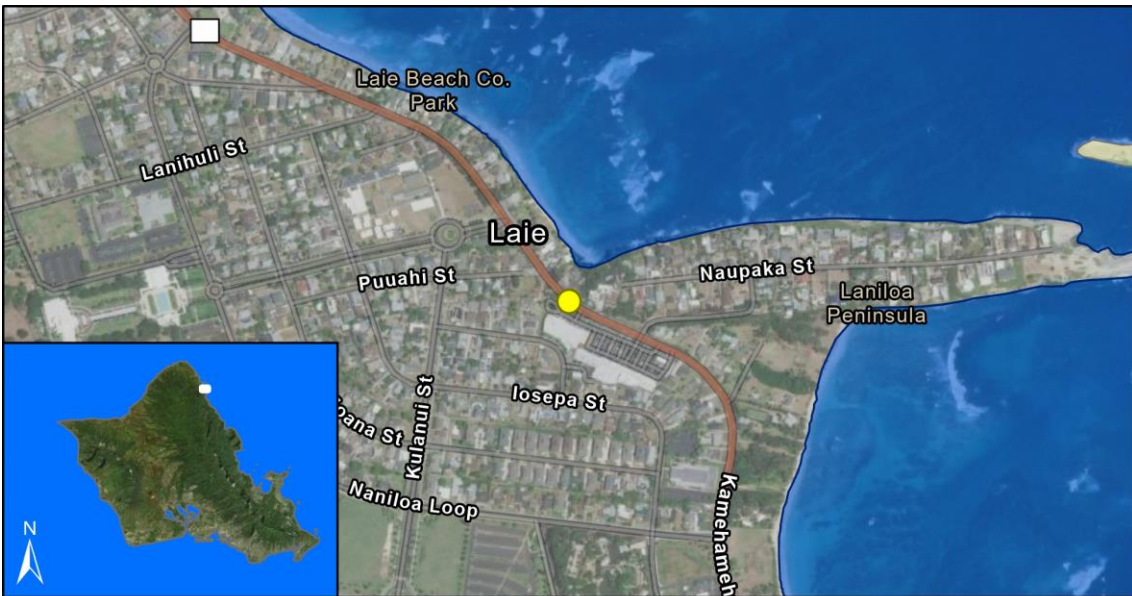
Project Sponsor: State of Hawaii (FHWA Funded)

Agency Responsible for Carrying Out Project/Phase:

Hawaii Department of Transportation

FOR INFORMATION ONLY

Phase	FFY 2022			FFY 2023			FFY 2024			FFY 2025			FFY 2026			FFY 2027			Funding Category
	Total (x\$1000)	Federal (x\$1000)	Local (x\$1000)	Total (x\$1000)	Federal (x\$1000)	Local (x\$1000)	Total (x\$1000)	Federal (x\$1000)	Local (x\$1000)	Total (x\$1000)	Federal (x\$1000)	Local (x\$1000)	Total (x\$1000)	Federal (x\$1000)	Local (x\$1000)	Total (x\$1000)	Federal (x\$1000)	Local (x\$1000)	
CON	0	0	0	18,360	8,688	9,672	0	0	0	0	0	0	0	0	0	0	0	0	NHPP
ADVCON	0	0	0	0	0	0	0	3,000	-3,000	0	3,000	-3,000	0	0	0	0	0	0	NHPP
Total	0	0	0	18,360	8,688	9,672	0	3,000	-3,000	0	3,000	-3,000	0	0	0	0	0	0	



Source: Esri, Maxar, GeoEye, Earthstar Geographics, CNES/Airbus DS, USDA, USGS, AeroGRID, IGN, and the GIS User Community, Sources: Esri, HERE, Garmin, FAO, NOAA, USGS, © OpenStreetMap contributors, and the GIS User Community

Project Description:

Replace the existing concrete slab bridge on Kamehameha Highway in the vicinity of Laie.

Mile Post/s: Kamehameha Highway: MP 18.31

Complete Streets (CS):

Project will implement: No information available. However, CS principles will be considered in all Highway Projects.

Existing Feature/s:	No information available.
----------------------------	---------------------------

Project Website: None

Neighborhood(s): Koolauloa

Estimated Total Project Cost: \$15,000,000

(May include project costs outside of the 4-year TIP and 2 informational years.)

Project Sponsor: State of Hawaii (FHWA Funded)

Agency Responsible for Carrying Out Project/Phase:
Hawaii Department of Transportation

FOR INFORMATION ONLY

Phase	FFY 2022			FFY 2023			FFY 2024			FFY 2025			FFY 2026			FFY 2027			Funding Category
	Total (x\$1000)	Federal (x\$1000)	Local (x\$1000)	Total (x\$1000)	Federal (x\$1000)	Local (x\$1000)	Total (x\$1000)	Federal (x\$1000)	Local (x\$1000)	Total (x\$1000)	Federal (x\$1000)	Local (x\$1000)	Total (x\$1000)	Federal (x\$1000)	Local (x\$1000)	Total (x\$1000)	Federal (x\$1000)	Local (x\$1000)	
ROW	700	560	140	0	0	0	0	0	0	0	0	0	0	0	0	0	0	0	NHPP
CON	0	0	0	14,280	1,124	13,156	0	0	0	0	0	0	0	0	0	0	0	0	NHPP
ADVCON	0	0	0	0	0	0	0	5,300	-5,300	0	5,000	-5,000	0	0	0	0	0	0	NHPP
Total	700	560	140	14,280	1,124	13,156	0	5,300	-5,300	0	5,000	-5,000	0	0	0	0	0	0	

OS-21-43 Kamehameha Highway (Route 99) Seismic Retrofit, Pearl Harbor Interchange, Structure #2



Source: Esri, Maxar, GeoEye, Earthstar Geographics, CNES/Airbus DS, USDA, USGS, AeroGRID, IGN, and the GIS User Community, Sources: Esri, HERE, Garmin, FAO, NOAA, USGS, © OpenStreetMap contributors, and the GIS User Community

Project Description:

All bridges identified to be potentially vulnerable to earthquake damage/collapse need to be analyzed and designed for retrofitting strategies to prevent their collapse during a credible earthquake. The type and scope of the retrofit work can only be determined through the analysis.

Mile Post/s: MP 23.2 to 23.4

Complete Streets (CS):

Project will implement: Not applicable

Existing Feature/s: No information available

Project Website: None

Neighborhood(s):

Estimated Total Project Cost: \$5,000,000

(May include project costs outside of the 4-year TIP and 2 informational years.)

Project Sponsor: State of Hawaii (FHWA Funded)

Agency Responsible for Carrying Out Project/Phase:

Hawaii Department of Transportation

FOR INFORMATION ONLY

Phase	FFY 2022			FFY 2023			FFY 2024			FFY 2025			FFY 2026			FFY 2027			Funding Category
	Total (x\$1000)	Federal (x\$1000)	Local (x\$1000)	Total (x\$1000)	Federal (x\$1000)	Local (x\$1000)	Total (x\$1000)	Federal (x\$1000)	Local (x\$1000)	Total (x\$1000)	Federal (x\$1000)	Local (x\$1000)	Total (x\$1000)	Federal (x\$1000)	Local (x\$1000)	Total (x\$1000)	Federal (x\$1000)	Local (x\$1000)	
PE1	0	0	0	510	408	102	0	0	0	0	0	0	0	0	0	0	0	0	NHPP
PE2	0	0	0	0	0	0	670	536	134	0	0	0	0	0	0	0	0	0	NHPP
CON	0	0	0	0	0	0	0	0	0	0	0	0	3,750	3,000	750	0	0	0	NHPP
Total	0	0	0	510	408	102	670	536	134	0	0	0	3,750	3,000	750	0	0	0	

OS-21-45 Pali Highway, Rockfall Mitigation, Vicinity of MP 5.90 to MP 6.10



Source: Esri, Maxar, GeoEye, Earthstar Geographics, CNES/Airbus DS, USDA, USGS, AeroGRID, IGN, and the GIS User Community, Sources: Esri, HERE, Garmin, FAO, NOAA, USGS, © OpenStreetMap contributors, and the GIS User Community

Project Description:

Rockfall protection/mitigation to be determined following an EA.

Mile Post/s: MP 5.90 to 6.10

Complete Streets (CS):

Project will implement: NA

Existing Feature/s: NA

Project Website: None

Neighborhood(s): Kaneohe, Kailua

Estimated Total Project Cost: \$5,000,000

(May include project costs outside of the 4-year TIP and 2 informational years.)

Project Sponsor: State of Hawaii (FHWA Funded)

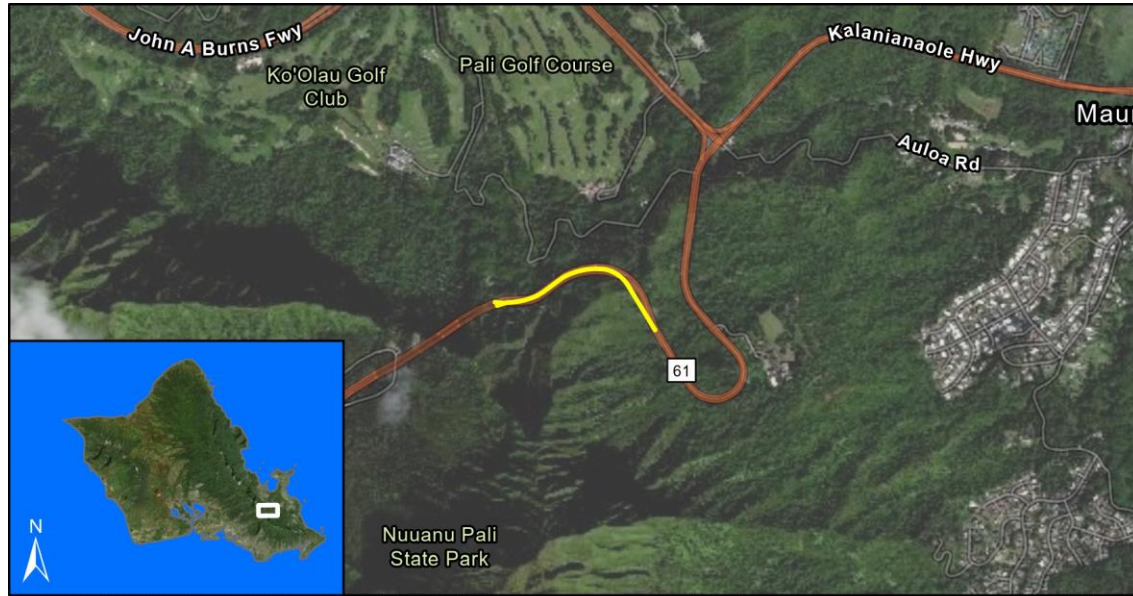
Agency Responsible for Carrying Out Project/Phase:

Hawaii Department of Transportation

FOR INFORMATION ONLY

Phase	FFY 2022			FFY 2023			FFY 2024			FFY 2025			FFY 2026			FFY 2027			Funding Category
	Total (x\$1000)	Federal (x\$1000)	Local (x\$1000)	Total (x\$1000)	Federal (x\$1000)	Local (x\$1000)	Total (x\$1000)	Federal (x\$1000)	Local (x\$1000)	Total (x\$1000)	Federal (x\$1000)	Local (x\$1000)	Total (x\$1000)	Federal (x\$1000)	Local (x\$1000)	Total (x\$1000)	Federal (x\$1000)	Local (x\$1000)	
PE1	0	0	0	370	296	74	0	0	0	0	0	0	0	0	0	0	0	0	NHPP
PE2	0	0	0	0	0	0	240	192	48	0	0	0	0	0	0	0	0	0	NHPP
ROW	0	0	0	0	0	0	25	20	5	0	0	0	0	0	0	0	0	0	NHPP
CON	0	0	0	0	0	0	0	0	0	0	0	0	4,000	3,200	800	0	0	0	NHPP
Total	0	0	0	370	296	74	265	212	53	0	0	0	4,000	3,200	800	0	0	0	

OS-21-44 Pali Highway, Rockfall Mitigation, Vicinity of MP 6.10 to MP 6.55



Source: Esri, Maxar, GeoEye, Earthstar Geographics, CNES/Airbus DS, USDA, USGS, AeroGRID, IGN, and the GIS User Community, Sources: Esri, HERE, Garmin, FAO, NOAA, USGS, © OpenStreetMap contributors, and the GIS User Community

Project Description:

Rockfall protection/mitigation to be determined following an EA.

Mile Post/s: MP 6.10 to 6.55

Complete Streets (CS):

Project will implement: NA

Existing Feature/s: NA

Project Website: None

Neighborhood(s): Kaneohe, Kailua

Estimated Total Project Cost: \$13,000,000

(May include project costs outside of the 4-year TIP and 2 informational years.)

Project Sponsor: State of Hawaii (FHWA Funded)

Agency Responsible for Carrying Out Project/Phase:

Hawaii Department of Transportation

FOR INFORMATION ONLY

Phase	FFY 2022			FFY 2023			FFY 2024			FFY 2025			FFY 2026			FFY 2027			Funding Category
	Total (x\$1000)	Federal (x\$1000)	Local (x\$1000)	Total (x\$1000)	Federal (x\$1000)	Local (x\$1000)	Total (x\$1000)	Federal (x\$1000)	Local (x\$1000)	Total (x\$1000)	Federal (x\$1000)	Local (x\$1000)	Total (x\$1000)	Federal (x\$1000)	Local (x\$1000)	Total (x\$1000)	Federal (x\$1000)	Local (x\$1000)	
PE1	0	0	0	1,020	816	204	0	0	0	0	0	0	0	0	0	0	0	0	NHPP
PE2	0	0	0	0	0	0	650	520	130	0	0	0	0	0	0	0	0	0	NHPP
ROW	0	0	0	0	0	0	25	20	5	0	0	0	0	0	0	0	0	0	NHPP
CON	0	0	0	0	0	0	0	0	0	0	0	0	11,000	4,800	6,200	0	0	0	NHPP
ADVCON	0	0	0	0	0	0	0	0	0	0	0	0	0	0	0	0	4,000	-4,000	NHPP
Total	0	0	0	1,020	816	204	675	540	135	0	0	0	11,000	4,800	6,200	0	4,000	-4,000	



Source: Esri, Maxar, GeoEye, Earthstar Geographics, CNES/Airbus DS, USDA, USGS, AeroGRID, IGN, and the GIS User Community

Project Description:

Construction of traffic counting stations for traffic data gathering and planning purposes. There is a separate phase shown for the rest of the islands in Statewide section of the STIP. This is a part of phase 2 of the Statewide project. The project will collect required Highway Performance Monitoring System (HPMS) data.

Mile Post/s:

Complete Streets (CS):

Project will implement: Not applicable

Existing Feature/s: Not applicable

Project Website: None

Neighborhood(s): Various Locations

Estimated Total Project Cost: \$4,500,000

(May include project costs outside of the 4-year TIP and 2 informational years.)

Project Sponsor: State of Hawaii (FHWA Funded)

Agency Responsible for Carrying Out Project/Phase:

Hawaii Department of Transportation

FOR INFORMATION ONLY

Phase	FFY 2022			FFY 2023			FFY 2024			FFY 2025			FFY 2026			FFY 2027			Funding Category
	Total (x\$1000)	Federal (x\$1000)	Local (x\$1000)	Total (x\$1000)	Federal (x\$1000)	Local (x\$1000)	Total (x\$1000)	Federal (x\$1000)	Local (x\$1000)	Total (x\$1000)	Federal (x\$1000)	Local (x\$1000)	Total (x\$1000)	Federal (x\$1000)	Local (x\$1000)	Total (x\$1000)	Federal (x\$1000)	Local (x\$1000)	
CON	0	0	0	0	0	0	2,809	247	2,562	0	0	0	0	0	0	0	0	0	STBG
ADVCON	0	0	0	0	0	0	0	0	0	0	2,000	-2,000	0	0	0	0	0	0	STBG
Total	0	0	0	0	0	0	2,809	247	2,562	0	2,000	-2,000	0	0	0	0	0	0	

FHWA-Funded Projects

O'ahu City (OC) Projects



Source: Esri, Maxar, GeoEye, Earthstar Geographics, CNES/Airbus DS, USDA, USGS, AeroGRID, IGN, and the GIS User Community

Project Description:

This is an ongoing islandwide program for the implementation of the Oahu Bicycle Master Plan improvements, the development of new projects, and the upgrade of existing bicycle projects.

Mile Post/s:

Complete Streets (CS):

Project will implement: Bikeway improvements; new bikeway projects; and bikeway upgrades.

Existing Feature/s: See Oahu Bicycle Master Plan

Project Website: <https://www.honolulu.gov/bicycle/bikeplanupdate.html>

Neighborhood(s): Islandwide

Estimated Total Project Cost: \$3,393,000

(May include project costs outside of the 4-year TIP and 2 informational years.)

Project Sponsor: City and County of Honolulu

Agency Responsible for Carrying Out Project/Phase:

City Department of Transportation Services

FOR INFORMATION ONLY

Phase	FFY 2022			FFY 2023			FFY 2024			FFY 2025			FFY 2026			FFY 2027			Funding Category
	Total (x\$1000)	Federal (x\$1000)	Local (x\$1000)	Total (x\$1000)	Federal (x\$1000)	Local (x\$1000)	Total (x\$1000)	Federal (x\$1000)	Local (x\$1000)	Total (x\$1000)	Federal (x\$1000)	Local (x\$1000)	Total (x\$1000)	Federal (x\$1000)	Local (x\$1000)	Total (x\$1000)	Federal (x\$1000)	Local (x\$1000)	
Kailua-Lanikai Bike Path																			
PE1	0	0	0	510	408	102	0	0	0	0	0	0	0	0	0	0	0	0	STBG
PE2	0	0	0	0	0	0	0	0	0	204	163	41	0	0	0	0	0	0	STBG
ROW	0	0	0	1	0	1	0	0	0	0	0	0	0	0	0	0	0	0	Local Only
CON	0	0	0	0	0	0	0	0	0	0	0	0	1,020	816	204	0	0	0	STBG
INSP	0	0	0	0	0	0	0	0	0	0	0	0	255	204	51	0	0	0	STBG
Waipahu Depot Shared Use Path																			
PE2	0	0	0	0	0	0	103	82	21	0	0	0	0	0	0	0	0	0	STBG
CON	0	0	0	0	0	0	0	0	0	0	0	0	1,040	832	208	0	0	0	STBG
INSP	0	0	0	0	0	0	0	0	0	0	0	0	260	208	52	0	0	0	STBG
Total	0	0	0	511	408	103	103	82	21	204	163	41	2,575	2,060	515	0	0	0	

OC10 Traffic Signals at Various Locations

														FOR INFORMATION ONLY						Funding Category
Phase	FFY 2022			FFY 2023			FFY 2024			FFY 2025			FFY 2026			FFY 2027				
	Total (x\$1000)	Federal (x\$1000)	Local (x\$1000)	Total (x\$1000)	Federal (x\$1000)	Local (x\$1000)	Total (x\$1000)	Federal (x\$1000)	Local (x\$1000)	Total (x\$1000)	Federal (x\$1000)	Local (x\$1000)	Total (x\$1000)	Federal (x\$1000)	Local (x\$1000)	Total (x\$1000)	Federal (x\$1000)	Local (x\$1000)		
Phase 19 - Waialae Avenue at 16th Avenue, Moanalua Road at Ualo Street																				
CON	0	0	0	0	0	0	0	0	0	0	0	0	1,734	1,734	0	0	0	0	STBG	
EQP	0	0	0	0	0	0	0	0	0	0	0	0	1	0	1	0	0	0	STBG	
INSP	0	0	0	0	0	0	0	0	0	0	0	0	957	765	192	0	0	0	STBG	
Phase 20 -King St/Punahou St, Makuahine/Hala Dr, Hawaii Kai/Kalalea, Kamehameha Hwy/Waikalua Rd, Ward Ave/Lunalilo, Kapahulu Interconnect																				
PE1	0	0	0	484	387	97	0	0	0	0	0	0	0	0	0	0	0	0	STBG	
PE2	0	0	0	0	0	0	0	0	0	688	550	138	0	0	0	0	0	0	STBG	
CON	0	0	0	0	0	0	0	0	0	0	0	0	1,700	1,700	0	0	0	0	STBG	
EQP	0	0	0	0	0	0	0	0	0	0	0	0	1	0	1	0	0	0	STBG	
INSP	0	0	0	0	0	0	0	0	0	0	0	0	938	750	188	0	0	0	STBG	
Phase 21 - Meahaula Pkwy/Ainamakua Dr (audio Ped), Kapiolani/Ward, Kapiolani/McCully																				
PE1	0	0	0	325	260	65	0	0	0	0	0	0	0	0	0	0	0	0	STBG	
PE2	0	0	0	0	0	0	465	372	93	0	0	0	0	0	0	0	0	0	STBG	
CON	0	0	0	0	0	0	0	0	0	0	0	0	1,700	1,700	0	0	0	0	STBG	
EQP	0	0	0	0	0	0	0	0	0	0	0	0	1	0	1	0	0	0	STBG	
INSP	0	0	0	0	0	0	0	0	0	0	0	0	938	750	188	0	0	0	STBG	
Total	4,540	3,615	925	5,498	5,298	200	1,153	922	231	688	550	138	7,970	7,399	571	0	0	0		



Source: Esri, Maxar, GeoEye, Earthstar Geographics, CNES/Airbus DS, USDA, USGS, AeroGRID, IGN, and the GIS User Community

Project Description:

The Transportation Alternatives Set-Aside Program (TA Set-Aside) is a competitive grant program that provides funding for programs and projects defined as transportation alternatives, including on- and off-road pedestrian and bicycle facilities, infrastructure projects for improving non-driver access to public transportation and enhanced mobility, and community improvement activities. Locations to be determined by the OahuMPO TAP Project Evaluation and Ranking process. HART projects may be flexed from FHWA to FTA. The Ala Wai Bridge project is a new pedestrian and bicycle bridge crossing the Ala Wai Canal in the University Ave/Kalaimoku Street alignment.

Mile Post/s:

Complete Streets (CS):

Project will implement: Ala Wai Bridge will be a new pedestrian and bicycle bridge crossing the Ala Wai Canal, connecting Waikiki and McCully-Moiliili neighborhoods.

Existing Feature/s: No information available.

Project Website: <https://www.oahumpo.org/plans-and-programs/transportation-alternatives-ta-set-aside/>

Neighborhood(s): McCully-Moiliili, Various Locations

Estimated Total Project Cost: \$46,600,000

(May include project costs outside of the 4-year TIP and 2 informational years.)

Project Sponsor: City and County of Honolulu

Agency Responsible for Carrying Out Project/Phase:
City Department of Transportation Services

FOR INFORMATION ONLY

Phase	FFY 2022			FFY 2023			FFY 2024			FFY 2025			FFY 2026			FFY 2027			Funding Category
	Total (x\$1000)	Federal (x\$1000)	Local (x\$1000)	Total (x\$1000)	Federal (x\$1000)	Local (x\$1000)	Total (x\$1000)	Federal (x\$1000)	Local (x\$1000)	Total (x\$1000)	Federal (x\$1000)	Local (x\$1000)	Total (x\$1000)	Federal (x\$1000)	Local (x\$1000)	Total (x\$1000)	Federal (x\$1000)	Local (x\$1000)	
Phase 3 - Ala Wai Bridge Project																			
PE2	0	0	0	1,418	1,134	284	0	0	0	0	0	0	0	0	0	0	0	0	STBG
PE2	0	0	0	25	20	5	0	0	0	0	0	0	0	0	0	0	0	0	STBG
PE2	0	0	0	1,250	1,000	250	0	0	0	0	0	0	0	0	0	0	0	0	TA-U
CON	0	0	0	0	0	0	10,217	8,174	2,043	10,217	8,174	2,043	10,217	8,174	2,043	0	0	0	STBG
CON	0	0	0	0	0	0	1,250	1,000	250	1,250	1,000	250	1,250	1,000	250	0	0	0	TA-U

OC25

Transportation Alternatives Set-Aside Program (MPO) at Various Locations

													FOR INFORMATION ONLY						Funding Category
FFY 2022			FFY 2023			FFY 2024			FFY 2025			FFY 2026			FFY 2027				
	Total	Federal	Local	Total	Federal	Local	Total	Federal	Local	Total	Federal	Local	Total	Federal	Local	Total	Federal	Local	
Phase	(x\$1000)	(x\$1000)	(x\$1000)	(x\$1000)	(x\$1000)	(x\$1000)	(x\$1000)	(x\$1000)	(x\$1000)	(x\$1000)	(x\$1000)	(x\$1000)	(x\$1000)	(x\$1000)	(x\$1000)	(x\$1000)	(x\$1000)	(x\$1000)	
Phase 3 - Ala Wai Bridge Project																			
INSP	0	0	0	0	0	0	1,720	1,376	344	1,720	1,376	344	1,720	1,376	344	0	0	0	STBG
Total	0	0	0	2,693	2,154	539	13,187	10,550	2,637	13,187	10,550	2,637	13,187	10,550	2,637	0	0	0	

FTA-Funded Projects

O'ahu City (OC) Projects



Source: Esri, Maxar, GeoEye, Earthstar Geographics, CNES/Airbus DS, USDA, USGS, AeroGRID, IGN, and the GIS User Community

Project Description:

Modify bus stops to comply with the Americans with Disabilities Act (ADA). Improve the mobility independence for transit users of all ages and abilities, pedestrian access, and the number of ADA accessible bus stops.

Mile Post/s: Not applicable

Complete Streets (CS):

Project will implement: ADA compliant site improvements on bus stop shelter, pavement, and landing provide pedestrians and bicycles with access to transit.

Existing Feature/s: No information available

Project Website: None

Neighborhood(s): Various Locations

Estimated Total Project Cost: \$3,815,000

(May include project costs outside of the 4-year TIP and 2 informational years.)

Project Sponsor: City and County of Honolulu

Agency Responsible for Carrying Out Project/Phase:

City Department of Transportation Services

FOR INFORMATION ONLY

Phase	FFY 2022			FFY 2023			FFY 2024			FFY 2025			FFY 2026			FFY 2027			Funding Category
	Total (x\$1000)	Federal (x\$1000)	Local (x\$1000)	Total (x\$1000)	Federal (x\$1000)	Local (x\$1000)	Total (x\$1000)	Federal (x\$1000)	Local (x\$1000)	Total (x\$1000)	Federal (x\$1000)	Local (x\$1000)	Total (x\$1000)	Federal (x\$1000)	Local (x\$1000)	Total (x\$1000)	Federal (x\$1000)	Local (x\$1000)	
DES	365	292	73	365	292	73	365	292	73	365	292	73	365	292	73	365	292	73	\$5307/\$5340
CON	251	201	50	251	201	50	251	201	50	251	201	50	251	201	50	251	201	50	\$5307/\$5340
CON	119	119	0	0	0	0	0	0	0	0	0	0	0	0	0	0	0	0	\$5310 ARPA & CRRSAA
Total	735	612	123	616	493	123	616	493	123	616	493	123	616	493	123	616	493	123	



Project Description:

Preventive maintenance of FTA-funded rolling stock (buses and Handi-Vans) includes parts, labor, and other related expenses.

Mile Post/s:

Complete Streets (CS):

Project will implement: Not applicable

Existing Feature/s: Not applicable

Project Website: None

Neighborhood(s): Various Locations

Estimated Total Project Cost: \$131,250,000

(May include project costs outside of the 4-year TIP and 2 informational years.)

Project Sponsor: City and County of Honolulu

Agency Responsible for Carrying Out Project/Phase:

City Department of Transportation Services

FOR INFORMATION ONLY

Phase	FFY 2022			FFY 2023			FFY 2024			FFY 2025			FFY 2026			FFY 2027			Funding Category
	Total (x\$1000)	Federal (x\$1000)	Local (x\$1000)	Total (x\$1000)	Federal (x\$1000)	Local (x\$1000)	Total (x\$1000)	Federal (x\$1000)	Local (x\$1000)	Total (x\$1000)	Federal (x\$1000)	Local (x\$1000)	Total (x\$1000)	Federal (x\$1000)	Local (x\$1000)	Total (x\$1000)	Federal (x\$1000)	Local (x\$1000)	
OPR	0	0	0	26,250	21,000	5,250	26,250	21,000	5,250	26,250	21,000	5,250	26,250	21,000	5,250	26,250	21,000	5,250	\$5307/\$5340
Total	0	0	0	26,250	21,000	5,250	26,250	21,000	5,250	26,250	21,000	5,250	26,250	21,000	5,250	26,250	21,000	5,250	

This report was funded in part through grants from the Federal Highway Administration and Federal Transit Administration, U.S. Department of Transportation. The views and opinions of the agency expressed herein do not necessarily state or reflect those of the U.S. Department of Transportation.

The City and County of Honolulu is using the OahuMPO TIP public involvement process, as outlined in the Federal Highway Administration/Federal Transit Administration metropolitan transportation planning regulations (23 CFR 450/49 CFR 613), to satisfy the public hearing requirements for the Federal Transit Administration's Urbanized Area Formula Program (49 U.S.C. Section 5307) program-of-projects.