



# **O‘ahu Metropolitan Planning Organization Citizen Advisory Committee**

**January 22, 2020**



# I. Call to Order & Introductions

Start time:

Meeting reports and presentation files  
are downloadable from  
<https://www.oahumpo.org/about-mpo/committees/citizen-advisory-committee/>



## **II. Approval of the November 20, 2019 Meeting Minutes**

To make a motion or second a motion,  
please state your name first.

**Mahalo!**



# **III. Executive Director's Report**

Alvin Au



## **IV. Reports from CAC Sub-committees**

### **A. Sub-committee on Pedestrian Safety**

**Ken Farm, Sub-committee chair**



## **V. Unfinished Business**



## **VI. New Business**

### **A. Election of Chair, Vice Chair and Meeting Location**

- Candidate Nominations
- 3 Min Campaign
- Voting by hand
- Meeting Location Nominations
- Discussion
- Voting by hand



# Nominations

motion and second to close nominations





# Meeting Location and Time

Traditionally 3<sup>rd</sup> Wednesday 3-4PM Honolulu  
Hale



# Nominations

motion and second to close nominations



CAC meeting Shift –

September 16 2020

November 18 2020

December 16 2020



## **VI. New Business**

### **B. Overview of Ala Wai Canal Alternatives Analysis**

- Ala Pono (DTS)
- Policy Board will vote on analysis on 28JAN20

Requested Action

**Provide advisory feedback (if any) to Policy Board.**

# DEMOGRAPHICS

**87,000** PEOPLE  
CURRENTLY LIVE IN AN AREA  
WHERE THEY CAN EASILY WALK OR  
BIKE ACROSS THE ALA WAI CANAL  
TO OR FROM CENTRAL WAIKIKI.



THE NEIGHBORHOODS  
AROUND THE CANAL ARE  
ESTIMATED TO GAIN  
**5,550**  
NEW RESIDENTS BY 2045.

MEDIAN HOUSEHOLD INCOMES ARE

**17% TO 29% LOWER**

IN NEIGHBORHOODS AROUND THE CANAL THAN  
HONOLULU'S MEDIAN HOUSEHOLD INCOME OF \$77,161.



THE NEIGHBORHOODS AROUND  
THE CANAL ARE HOME TO

**7,000+** PEOPLE  
EXPERIENCING A DISABILITY.

**ONE IN TEN**

HONOLULU RESIDENTS ARE  
EXPERIENCING A DISABILITY.

*Honolulu*  
COMPLETESTREETS

  
**ALA PONO**  
*an Ala Wai crossing*

# PROJECT ALTERNATIVES

**A B C**

## ENHANCE EXISTING CROSSINGS:

Improve existing canal crossings with possible solutions ranging from reconfiguration of the existing bridge travel lanes to structural solutions to create more space for people walking and bicycling.

**D E**

## CREATE A NEW CROSSING:

Create a new canal crossing with a bicycle and pedestrian bridge at either University Avenue or in the vicinity of the Ala Wai Golf Course.

## NO BUILD

No new crossing or improvements to existing crossings, establishing an existing conditions baseline for the alternatives analysis.

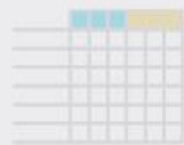
## OTHER ALTERNATIVES

Three non-bridge solutions were assessed:

- F** Aerial Tram: Construct an aerial tram to transport people across the Ala Wai Canal.
- G** Aqua Bus: Establish a network of dock locations and a fleet of vessels to transport people along with bicycles, strollers, and wheelchairs across the Ala Wai Canal.
- H** Tunnel: Construct a tunnel under the Ala Wai Canal for people walking and bicycling.

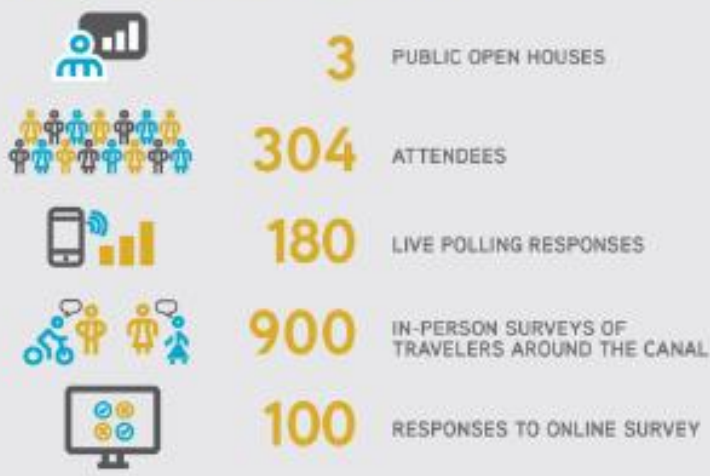


PROJECT ALTERNATIVES



# COMMUNITY & AGENCY ENGAGEMENT

## OUTREACH SUMMARY



## What we heard from the public...

**"WIDEN MCCULLY BRIDGE, make access by walking and biking safer."**

**"Prioritize CONNECTIVITY & ACCESSIBILITY"**

**"If a pedestrian bridge is constructed on University Avenue it is critically important to MAINTAIN TRAVEL LANES"**

**"I really wish I could bike to work instead of paying \$1,000 in gas and \$1,200 in parking each year."**

**"Do not turn our residential area into a noisy and uncomfortable corridor for the rest of time."**

**"I have lots of concerns re HEALTH & SAFETY ISSUES for the neighboring community and schools."**

## Relative level of community concern



**"Ala Pono for future generations!"**

**"Another opportunity to get across the Ala Wai would be ideal. Accessibility to Waikiki is important."**

**"Make it SAFE!"**

## Respondents want a crossing that...

**"...provides safe travels for bicycles and beyond the bridge."**

**"...allows me to ENJOY THE GREAT SCENERY of the Ala Wai Canal."**

**"...is aesthetically pleasing, separates bikes and pedestrians, and is creative without being overly expensive."**

**"...considers the needs of OUR KUPUNA AND DISABLED 'OHANA"**

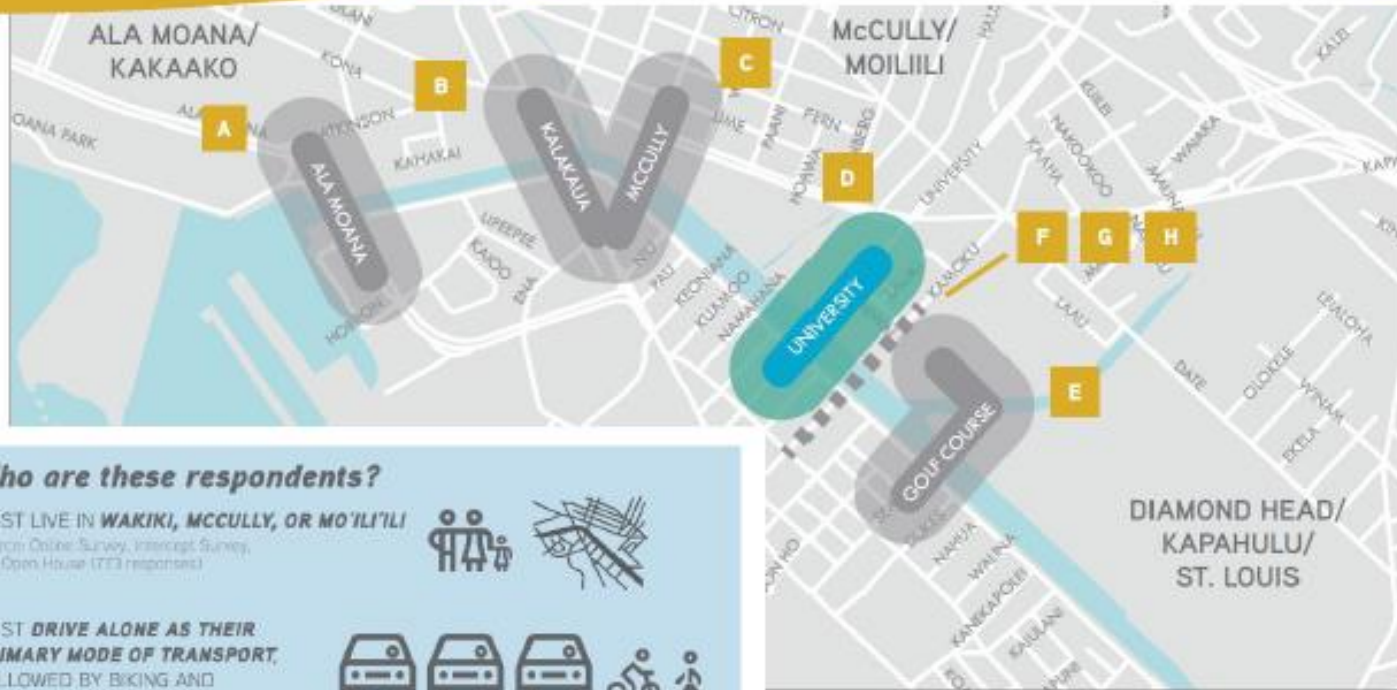
Source: Open Houses and Online Survey

Source: Online Survey (791 responses)





# HIGHEST SCORING ALTERNATIVE



46%

## Who are these respondents?

**MOST LIVE IN WAKIKI, MCCULLY, OR MO'ILI'ILI**

Source: Online Survey, Intercept Survey, and Open House (773 responses)



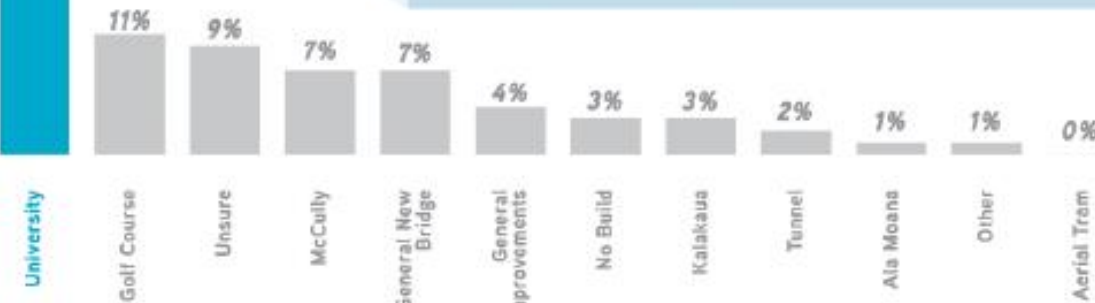
**MOST DRIVE ALONE AS THEIR PRIMARY MODE OF TRANSPORT, FOLLOWED BY BIKING AND WALKING**

Source: Online Survey and Open House (394 responses)



**THOSE WHO BIKE OR WALK CROSS THE EXISTING BRIDGES MULTIPLE TIMES PER DAY**

Source: Online Survey (189 responses)







## IMPLEMENTATION & NEXT STEPS

**January 2020:** Present final Alternatives Analysis to Oahu MPO

**Spring/Summer 2020:** Continued community and stakeholder engagement

**Summer 2020:** Community meeting and public review of Draft Environmental Assessment

**Spring 2021:** Final bridge design complete

**2022-2023:** Construction



# PRELIMINARY ENGINEERING (PE-1)

## Responding to Community Feedback



Project design visualization, renderings, and physical



Urban design plan



Viewshed impact analysis



Management plan for parking supply and demand



Pedestrian lighting



Ongoing maintenance, security, and operations of the bridge



# How to Comment

- Policy Board 28JAN20
- Full presentation to CAC in FEB 2020
- <https://www.honolulu.gov/completestreets/alapono>
- [meredith.soniat@honolulu.gov](mailto:meredith.soniat@honolulu.gov)



# FFYs 2019-2022 TIP Revision #10 Amendment



## What is the Transportation Improvement Program (TIP)?

- A four-year schedule of surface transportation projects
- Program, *not* a plan (“what gets built”)



# FFYs 2019-2022 TIP Revision #10

- Amendment (“major changes”)

- 7 project amendments:

- 2 **projects added** (OS82 and OC31)
- 3 **added phases** to projects (OS59, OC25, OC13)

OC13 also increased quantity of revenue rolling stock  
*6x 30' buses, 4x 40' buses, 10x 20' buses added in 2020)*

- 1 **extension of limits**  
(OS59 – extending from Waiawa to Waikele)
- 1 project **cost revision** (OC25 - 5 mil.)



PROJECT NUMBER	PROJECT NAME <i>(Sorted by Project Number)</i>	REVISION DETAILS
<b>Federal Highway Administration (FHWA) - Funded Projects</b>		
<b>Oahu State (OS) of Hawaii - Sponsored Projects</b>		
OS82	Interstate Route H-1 Improvements, Eastbound, Ola Lane Overpass to Vineyard Boulevard	Request to add a new regionally significant project to be funded with Rental Car Surcharge (C.1).
OS59	Interstate Route H-1, Eastbound Improvements, Waiawa Interchange Waikele to Halawa Interchange	Request to extend limits from Waiawa Interchange to Waikele (C.3).
OS59	Interstate Route H-1, Eastbound Improvements, Waiawa Interchange Waikele to Halawa Interchange	Request to add CON funding: all local State funds from Rental Car Surcharge Increase (C.5)

<b>Federal Highway Administration (FHWA) - Funded Projects</b>		
<b>Oahu City (OC) and County of Honolulu - Sponsored Projects</b>		
OC25	Transportation Alternatives Program (MPO) - Phase 3 - Ala Wai Bridge Project	Request to revise project costs due to preliminary estimates (C.8).
OC25	Transportation Alternatives Program (MPO) - Phase 3 - Ala Wai Bridge Project	Request to add CON phase (C.5).

<b>Federal Transit Administration (FTA) - Funded Projects</b>		
<b>Oahu City (OC) and County of Honolulu - Sponsored Projects</b>		
OC13	Bus and Handi-Van Acquisition Program - FY2020	Request to add new phase for increased quantity of revenue rolling stock >20% (C.4) and adjust EQP funds (A.11).
OC31	Middle Street Transit Center	Request to add a new locally funded transit project (C.1).

<b>NUMBER OF PROJECTS BEING REVISED IN REVISION #10:</b>	<b>PERCENTAGE OF TOTAL TIP PROJECTS REVISED IN REVISION #10:</b>
5	8%



Jan 14th – 30th

Intergovernmental review and public comment period

Public Draft may be viewed on our website:

[www.oahumpo.org](http://www.oahumpo.org)

Technical Advisory Committee – February 14th

Policy Board – February 25th





## **VI. New Business**

### **D. Overall Work Program FY2020 Rev #1**

#### **Changes**

- Adding \$555,000 (out of \$2,890,805)
  - Increase Scope of Work ORTP *Jacobs* to cover Senior Tran Planner
- Correcting Members Dues (double counted in staff and consultant)



## How to Comment

- <https://www.oahumpo.org/plans-and-programs/overall-work-program-owp/>
- Public Comment Period was closed on 18DEC19
- Policy Board 28JAN20



VII. Invitation to interested members of the public to be heard on matters not included on the agenda



## VIII. Announcements

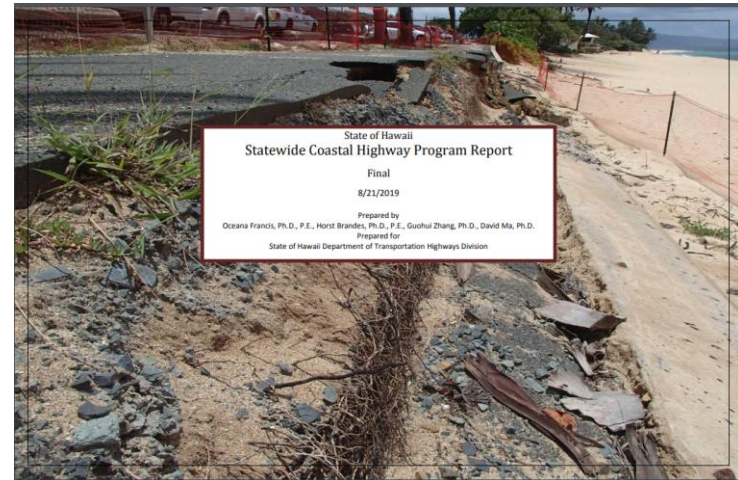
CAC meeting Shift –  
September 16 2020  
November 18 2020  
December 16 2020



## VIII. Announcements

*Now available!*

HDOT Statewide  
Coastal Highway Study Report



Link:

[hidot.hawaii.gov/highways/files/2019/09/State-of-Hawaii-Statewide-Coastal-Highway-Program-Report\\_Final\\_2019.pdf](https://hidot.hawaii.gov/highways/files/2019/09/State-of-Hawaii-Statewide-Coastal-Highway-Program-Report_Final_2019.pdf)



## VIII. Announcements

*Subscribe to be on the mailing list!*

Complete Streets Upcoming Events

Link:  
[www.honolulu.gov/completestreets](http://www.honolulu.gov/completestreets)

The screenshot shows the 'Honolulu COMPLETE STREETS' website. The header includes navigation links: HOME, POLICY, PLANNING, PROJECTS, PARTNERS, and STAY IN THE LOOP. The main content area features the heading 'What Are Complete Streets?' followed by a paragraph explaining the concept. Below this are four circular icons representing key benefits: 'Safe and convenient for people of all ages and abilities', 'Accommodating to all modes, including foot, bicycle, transit, and automobile', 'Integrated with the community's vision and sense of place', and 'Supportive of community health and transportation equity'. A paragraph below these icons describes how complete streets support healthy and sustainable communities. At the bottom of the main content are three small images showing street scenes with pedestrians, a cyclist, and a person walking. On the right side, there is a 'Subscribe to our mailing list' form with fields for 'Email Address\*', 'Name', and 'Affiliation'. Below the form is a section titled 'Which Complete Streets Projects Are You Interested In?' with a list of project areas: Downtown/Chinatown, Honolulu Urban Core, Liliha/Nozomu, Kalia, Waikiki, Kalihi, University Avenue, Kaneohe, Pearl City, and ALL PROJECTS. A 'Subscribe' button is located at the bottom of the form. The footer includes the text 'Find us on' followed by a Facebook icon.



## **IX. Tentative Schedule for Next Meeting**

October 16, 2019  
(3<sup>rd</sup> Wednesday)



# X. Adjournment

End time





# O'ahu Metropolitan Planning Organization

707 Richards Street, Suite 200

Honolulu, Hawai'i 96813

(808) 587-2015

[www.OahuMPO.org](http://www.OahuMPO.org)

[www.Facebook.com/OahuMetropolitan](https://www.Facebook.com/OahuMetropolitan)